

Highlights

- Research on the effects on academic performance from the use of classroom technology shows mixed results, with some studies reporting significant gains in test scores and other studies showing no positive effect. Yet, clearly, technology plays an important role in today's schools as this skill set becomes more vital in today's society.
- Despite Utah's consistently low per-pupil expenditure the state has thrived in the area of integrating technology and education. The one exception to this is novice teacher preparedness, in which Utah ranks quite low.
- Changes in the way federal monies are awarded for technology programs have created a more competitive environment for new initiatives, producing innovative programs and helping to spread the use of programs that work in other states.
- Utah's statewide test results have remained relatively static over the last five years. However, this year's data included results disaggregated by race for the first time and revealed sharp achievement discrepancies among ethnicities that are troubling, particularly in the light of the federal No Child Left Behind law.

Utah Foundation is a nonprofit, non-advocacy research organization. Our mission is to encourage informed public policy making and to serve as Utah's trusted source for independent, objective research on crucial public policy issues.

4141 Highland Drive, Suite 102
Salt Lake City, Utah 84124
(801) 272-8824
www.utahfoundation.org

Utah Statewide School Testing Results: 2002 *Including an Analysis of Technology in Utah Schools*

Introduction

Since 1990, Utah Foundation has offered an analysis of the results of Utah's Statewide Testing program. This program mandates that a uniform test, currently the Ninth Edition of the Stanford Achievement Test (SAT 9), be administered to every third, fifth, eighth, and eleventh grader in the state. This year's report, while still looking at the current test performance (individual school performance can be found in the Appendix at the end of the report) of Utah's students, includes two additions to our traditional analysis of the SAT 9. First, this year's analysis will focus on the impact technology has had on Utah's education system. In order to accomplish this, Utah Foundation looked at national studies analyzing the effect of technology in the classroom on achievement, the various strategies currently being employed in Utah, and methodologies for quantifying the effect of technology on achievement. Second, there has been an increased sensitivity recently to student achievement within various ethnic sub-groups. Because of this, for the first time, statewide testing data by grade level, subject and ethnicity will be analyzed in this report.

Technology and Education Nationally

Technological innovation was one of the defining features of the 1990s. Its rapid evolution energized the economy by streamlining business processes and creating new economic sectors. This led to unparalleled growth and the increased use of technology to increase efficiency. The effects on education occurred at both a practical and a theoretical level. As Jeffery T. Fouts has said "A driving force of these restructuring efforts is the belief that a school system built on a Nineteenth Century industrial efficiency model is inadequate to meet the needs of the society of the Twenty-First Century that has been transformed by technology. Because technology has transformed businesses and many other components of daily life, many are relying on technology to help transform the nature of the school experience. As the new millennium begins that transformation is still incomplete."¹

Not only is the philosophical transformation of the educational system incomplete, the quantifiable data on the benefit of technology to student performance is currently sketchy due to the methodological constraints researchers face in this area. These methodological constraints are similar to the problems elaborated on in last year's analysis of the SAT 9 in regards to test bias.² For example, controlling for the many variables that could affect performance (parental educational attainment and involvement, income, etc.) to gauge achievement is difficult without including technology as a variable. However the inclusion of technology introduces both the specifics of what type of technology, software, etc. is being used and more intangible variables, such as an instructor's knowledge of technology.

These limitations have led numerous researchers to contend that while there is a vast amount of basic, or level I, research, analysis of technology's effect on education at the experimental and program evaluation levels (levels II and III respectively) has not kept pace. This has created a dearth of data related to

what policy analysts have most wanted to know. Specifically, what effect does the massive investment in technology have on student achievement? And, which programs are more likely to be successful?

In 1999 the Milken Exchange produced the most comprehensive survey of the state of the literature on technology and education to date. Utah Foundation is including a brief summary of its findings in this research report in an effort to portray national trends in education and technology research. This problem can be observed most effectively by two methodologies embodied in two studies that were particularly effective in attempting to quantify the effect of technology on performance.

The first, completed by James Kulik in 1994, was a meta-analysis of more than 500 previous studies of the effects of technology, specifically computer based instruction, on achievement. Meta-analyses were defined by Bengter-Drowns and Rudner as “a collection of systematic techniques for resolving apparent contradictions in research findings. Meta-analysts translate the results from different studies to a common metric and statistically explore relations between study characteristics and findings.”³ In other words, meta-analysis allows the researcher to combine the results of many studies that may have reached different conclusions, and aggregate those results in a way that takes into account the methodological variances of the individual studies. The result is a statistically significant, probable effect based on all the research that has been done to date. In Kulik’s study, more than 500 studies were categorized according to age-level, subject, or both depending on the level of information. Controls were then created via the meta-analysis process, and the results of each sub-group were averaged to produce a percentile gain based on certain variables. While not all sub-groups in Kulik’s meta-analysis showed statistically significant positive gains, the average percentile difference between students who received computer-based instruction and their counterparts who did not, was 14 percentile points (64th percentile and 50th percentile respectively).

The introduction of computers did not have a positive gain in every area studied, and the positive effects they had were subject specific—the sciences were particularly aided by the introduction of technology.

Selected results of Kulik’s meta-analysis are shown in Figure 1, and appear to be quite promising. Figure 1 is a list of the groups that showed statistically significant percentile gains in the meta-analysis. They indicate a cross-subject gain of at least 9 percentile points over a control group for those groups showing gains. Two other conclusions can be drawn from the meta-analysis. First, the larger percentile gains were found in studies that were conducted at the elementary level rather than the secondary level; however, higher education gains outpaced both elementary and secondary results. The subgroup most aided by the introduction of technology was, far and away, special education, which saw a 22-percentile point gain over the 18 studies analyzed. This is directly related to the second conclusion that can be drawn from Kulik’s study. Specifically, that the gains that do occur are subject and population specific. The introduction of computers did not have a positive gain in every area studied, and the positive effects they had were subject specific—the sciences were particularly aided by the introduction of technology.⁴

The second type of study reviewed by the Milken Exchange, and possibly the most well known study of the effects of technology on academic progress to date, is the review of the Apple Classrooms of Tomorrow (ACOT) study conducted by Baker, Gearhart, and Herman. In this study, the researchers reviewed five school sites in various states (California, Tennessee, Minnesota and Ohio) that participated in the

Figure 1

Selected Results from Kulik’s Meta-Analysis

Instructional Level/Subject	Percentile Gain over Control
Secondary	10
Elementary & Secondary	14
Health Professions	18
Elementary & Secondary Math	16
Higher Education/ Vocational Technology*	19
College	11
Vocational Technology*	15
Elementary	14
Special Education	22
Pre-College Science	9
English, Writing--All Levels	No statistically significant change
Class Management/ Enrichment Uses	No statistically significant change

Source: Table excerpted from Kulik, James A. (1994). See endnote 4.

ACOT program. They randomly sampled the cities chosen in hopes of isolating the effects of technology on performance.

The Apple Classrooms of Tomorrow project outfitted many impoverished schools with state-of-the-art technology. This potentially allowed researchers to determine the maximum effect of technology on performance. The Apple Classrooms of Tomorrow study looked at a random sampling of those schools participating in order to gauge the effects on test scores of the technology infusion provided by Apple.

While they found that there were attitude improvements across the board for both students and teachers, there were no statistically significant gains on standardized tests when results were compared nationally to students who did not participate in the ACOT experiment. The lack of a statistically significant change in scores in the ACOT review should not be interpreted as a contradiction of Kulik's results. It only indicates that any positive, outcome-based changes were not statistically significant from the control group. Additionally, the ACOT study was completed before the advent of outcome-based education. As such, the positive results it did find were as important, if not more so, than the lack of standardized test achievement. The new philosophical leanings toward outcomes should not lead one to underestimate the value of the more qualitative benefits achieved by ACOT, particularly in its abilities to create more student-teacher cooperation in the learning environment, and encourage higher level reasoning and problem solving.⁵

These studies and methodologies have been repeated in recent years, however there have been no substantive changes in results. The same three problems consistently plague researchers who wish to analyze the effects of technology and its implications on educational performance. First, these studies lack a control group in a classical sense. While control groups can be created in cases like the ACOT study, where similar students not participating in the program can be measured, it is virtually impossible at the present time to find a classroom that is untouched by technology—making its isolation as a variable extremely difficult. Second, while meta-analysis is a particularly useful tool to compensate for the lack of a control in many instances, in education it has some significant shortcomings. Education is widely acknowledged to be a complex issue where many external variables affect a student's overall performance. Meta-analyses tend to mask these types of variables. Thus, the very homogenizing process that makes meta-analysis a useful tool in some areas probably overly simplifies outcomes in the realm of education and should be used cautiously. Third, and related to number two, these studies have consistently found that intangible variables such as teacher attitudes and modes of teacher implementation are probably the best indicators of a successful fusion of technology and increased performance on tests. However, these indicators are difficult to measure, especially when studies are focused on the presence of technology, rather than on the presence and effectiveness of programs to implement technology. Fortunately, Utah is in a unique position to solve some of these difficulties.

Utah's Use of Technology and Education

While Utah currently holds the distinct position of being the state with the lowest per pupil funding, one of the things it has done well with its limited fiscal resources is fund technological improvements and ensure that Utah's students are maximizing these resources in their education. A study released by Education Week reported in its Technology Counts: 2003 report, Utah is a leader nationally in utilizing technology in order to

One of the things Utah has done well with its limited fiscal resources is fund technological improvements and ensure that Utah's students are maximizing these resources in their education.

Figure 2

State Initiatives in Computer-Based Testing

State	Name of computer-based test	Grade(s) in which computer-based tests are available	Subject(s) tested ³	All districts/schools are required to participate in computer-based testing	Test is administered over the Internet	Test is adaptive (questions change based on prior answers)	Test includes open-ended questions	Answers to open-ended questions are machine-graded	Special accommodations for ELL or disabled students?	State uses an outside vendor to design/administer the test	Test was designed to meet NCLB requirements
Arkansas	Vocational Student Competency Testing Program	8-12	V	Yes	Yes	No	No	No	No	Yes	No
Delaware	Delaware Student Testing Program ¹	5, 6, 8, 9	E, M	No	Yes	No	Yes	Yes ⁵	No	Yes	No
D.C.	Measure of Academic Progress ¹	2	E, M	No	No	Yes	No	No	No	Yes	No
Idaho	Idaho Standards Achievement Test	2-10	E, M	No	Yes	Yes	No	No	No	Yes	Yes
Indiana	Indiana End-of-Course Assessments ¹	8-12	E, M	No	Yes	No	Yes	Yes	No	Yes	No
Kansas	Kansas Mathematics Assessment ¹	7	M	No	Yes	No	No	No	No	No	Yes
Kentucky	Kentucky Core Content Assessment ^{1,2}	4,5,7,8,10-12	E, M, H, S	No	Yes	No	Yes	No	Yes	No	No
Maryland	Maryland Functional Reading/Math Tests	6-12	E, M	No	Yes	Yes	No	No	No	Yes	No
North Carolina	Computer Skills Test	8	T	Yes	No	No	Yes	No	Yes	No	No
	North Carolina Computerized Adaptive Testing System ^{1,2}	3-8, 10	E, M	Yes ⁴	Yes	Yes	No	No	Yes	No	No
Oregon	Technology Enhanced Student Assessment	3-12	E, M	No	Yes	No	No	No	Yes	Yes	Yes
South Dakota	Dakota Assessment of Content Standards	2-12	E, M	No	Yes	Yes	No	No	Yes	Yes	No
Utah	Utah Performance Assessment System for Students	3-12	E, M, S	No	Yes	No	No	No	Yes	Yes	Yes
Virginia	Standards of Learning End-of-Course Test	high school	E, M, H, S	No	Yes	No	No	No	No	Yes	Yes
U.S.	-	-	-	2	12	5	4	2	6	10	5

1. Testing is in the pilot phase.
2. Test serves as an accommodation for students with disabilities to take the state assessments. Test is only available for students with disabilities.
3. E=english/language arts, M=mathematics, H=social studies/history, S=science, T=technology, V=vocational studies.
4. Any district or school chosen by the state for the pilot phase of testing must participate. However, there is no statewide participation requirement. State does not count in U.S. totals.
5. Tests are both machine-graded and graded by hand.

Source: Education Week Survey of State Departments of Education, 2003.

streamline testing. In fact, Utah is one of twelve states that is currently integrating technology into statewide testing programs. In essence, this means Utah has gone above and beyond the testing requirements of the federal No Child Left Behind law (See Figure 2).

Perhaps the greatest area that could use improvement in Utah is the area of teacher training.

Figure 3 shows all fifty states and their ranks in various measures of technology hardware and teacher training. Aside from Utah's fairly high student to instructional computer and internet connection ratios, which are the ninth and eleventh highest in the nation, respectively, Utah has done an exceptional job on the technological front when this measure is shifted from students to schools. This difference is a reflection of the large class sizes in Utah. Specifically, Utah has the second highest school internet connection rate in the nation (99% of all schools) and the second highest high speed internet connection rate. Additionally, the gap between schools that are connected to the internet and schools that extend those connections to classrooms is one of the smallest in the country. This is an indicator of the effort that has been made to ensure that students have access to the highest level of technology the school has available.

Perhaps the greatest area that could use improvement in Utah is the area of teacher training. For example only 33% of novice teachers felt well prepared to utilize technology in educating their students according to Education Week. This puts Utah in the bottom quartile of states in terms of new teacher experience with technology. Additionally, Utah is only average in terms of teachers who consistently take development courses in order to increase their technological prowess.⁶ However, as shown in the next section, significant efforts are underway to alleviate both of these shortcomings.

Current Utah Programs

Prior to 2001, states were given technology grants that were then distributed to schools and were spent, mainly as districts and schools saw fit. However, with the amendments to the Elementary and Secondary Education Act states now need to apply for grant money for specific programs that are reviewed at the federal level for approval. These grants must focus on one of three areas: professional development for technology leadership, infrastructure improvements and technical support, or classroom models for inquiry-based student access. Five such programs have been approved for Utah in the coming years. These programs provide Utah a unique opportunity to alleviate two of the main problems previously mentioned in this report. First, they allow Utah's education administrators the opportunity to compare the effectiveness of these programs in various environments, and, potentially, against a control group that was not exposed to any of these grant programs. This could provide a level of analysis as to the outcomes of technology that has not been achieved before. Second, these programs focus on training teachers as well as students, as we shall see.

Classroom Models for Inquiry-Based Student Access

The first, and largest, grant-funded program is modeled off of a program

Figure 3

Comparing the Fifty States on Key Technology Indicators: 2002*

State	Students per Instructional Computer		Students per Internet connected computer		% of Schools with Internet Access		% of Classrooms with Internet Access		% of Classrooms with High Speed Access		Difference: Classrooms Connected vs. Schools Connected		Difference: Classrooms Connected vs. High Speed Classrooms		Teachers Participating in Computer Development		Novice Teachers "Prepared" Technologically	
	Level	Rank	Level	Rank	Level	Rank	Level	Rank	Level	Rank	Level	Rank	Level	Rank	Level	Rank	Level	Rank
AL	5.1	2	7.4	4	93	39	90	22	67	41	3	34	23	9	72	20	47	10
AK	2.7	43	4.3	43	94	28	88	32	63	44	6	15	25	7	68	28	46	13
AZ	4.1	13	5.9	17	94	28	88	32	80	13	6	15	8	35	71	23	34	45
AR	3.9	22	5.1	30	95	22	84	45	72	29	11	5	12	28	58	48	43	22
CA	5.1	2	7.7	2	87	48	85	43	70	35	2	41	15	21	60	46	39	34
CO	3.9	22	5.9	17	94	28	89	28	80	13	5	20	9	32	65	36	44	19
CT	4.5	9	7.3	5	97	7	83	46	66	43	14	3	17	17	75	11	43	22
DE	3.7	26	3.6	49	100	1	98	1	98	1	2	41	0	48	63	39	44	19
FL	3.5	30	5.8	19	94	28	87	36	81	12	7	10	6	41	68	28	47	10
GA	4	17	6	13	94	28	89	28	79	18	5	20	10	31	67	33	48	9
HI	4.3	11	6.7	6	96	17	89	28	87	3	7	10	2	47	61	45	26	49
ID	3	41	4.4	41	98	4	93	10	75	25	5	20	18	16	82	4	54	3
IL	4	17	5.8	19	93	39	86	38	83	9	7	10	3	46	79	8	42	26
IN	3.2	38	4.9	33	97	7	92	12	77	23	5	20	15	21	72	20	39	34
IA	2.7	43	4.4	41	97	7	94	8	80	13	3	34	14	24	67	33	46	13
KS	2.4	48	4.1	44	97	7	90	22	70	35	7	10	20	14	77	9	51	7
KY	3.9	22	5.5	24	95	22	95	6	72	29	0	49	23	9	74	14	41	29
LA	5.8	1	8.2	1	93	39	78	48	72	29	15	2	6	41	69	27	39	34
ME	4	17	5.5	24	97	7	94	8	67	41	3	34	27	6	59	47	38	41
MD	4.8	7	7.7	2	93	39	75	49	75	25	18	1	0	48	64	38	31	48
MA	4	17	6	13	87	48	82	47	68	38	5	20	14	24	68	28	38	41
MI	4.1	13	6	13	94	28	86	38	72	29	8	6	14	24	68	28	41	29
MN	3.2	38	5.1	30	97	7	96	4	87	3	1	45	9	32	63	39	39	34
MS	4.9	5	5.6	23	94	28	86	38	79	18	8	6	7	38	70	26	38	41
MO	3.3	35	4.9	33	96	17	91	17	85	5	5	20	6	41	63	39	43	22
MT	2.8	42	4.7	39	96	17	93	10	45	50	3	34	48	1	73	17	42	26
NE	2.5	46	3.7	48	97	7	96	4	80	13	1	45	16	19	66	35	41	29
NV	5.1	2	6.6	8	85	50	90	22	68	38	-5	50	22	13	73	17	25	50
NH	4.9	5	6.7	6	95	22	87	36	56	47	8	6	31	5	82	4	38	41
NJ	3.7	26	5.4	26	89	45	85	43	68	38	4	30	17	17	74	14	42	26
NM	3.2	38	5.4	26	95	22	92	12	69	37	3	34	23	9	65	36	45	16
NY	4.2	12	6.4	10	89	45	75	49	80	13	14	3	-5	50	62	42	39	34
NC	4.1	13	6.5	9	97	7	91	17	71	34	6	15	20	14	81	6	39	34
ND	2.3	49	4.1	44	99	2	92	12	78	22	7	10	14	24	84	2	44	19
OH	3.3	35	4.6	40	92	43	90	22	85	5	2	41	5	45	71	23	45	16
OK	3.6	29	5.2	29	94	28	89	28	83	9	5	20	6	41	75	11	40	33
OR	4	17	5.8	19	96	17	90	22	75	25	6	15	15	21	62	42	54	3
PA	3.5	30	5.4	26	90	44	86	38	74	28	4	30	12	28	74	14	53	5
RI	4.7	8	6	13	88	47	86	38	63	44	2	41	23	9	52	50	41	29
SC	3.9	22	4.8	38	97	7	92	12	84	7	5	20	8	35	68	28	46	13
SD	1.8	50	2.6	50	98	4	97	2	72	29	1	45	25	7	83	3	52	6
TN	4.1	13	6.2	11	95	22	90	22	52	48	5	20	38	4	71	23	47	10
TX	3.3	35	5	32	94	28	91	17	83	9	3	34	8	35	80	7	39	34
UT	4.5	9	6.2	11	99	2	95	6	88	2	4	30	7	38	72	20	33	46
VT	3.4	34	4.9	33	94	28	88	32	47	49	6	15	41	2	58	48	55	2
VA	3.5	30	4.9	33	95	22	91	17	79	18	4	30	12	28	85	1	60	1
WA	3.5	30	5.8	19	94	28	91	17	84	7	3	34	7	38	62	42	43	22
WV	3.7	26	4.9	33	97	7	92	12	76	24	5	20	16	19	77	9	45	16
WI	2.7	43	4.1	44	96	17	88	32	79	18	8	6	9	32	75	11	32	47
WY	2.5	46	3.9	47	98	4	97	2	57	46	1	45	40	3	73	17	50	8

*All data is 2002, except novice teacher attitude & professional development data, which is 2000.

Source: Education Week Technology Counts: 2003.

Only 33% of novice teachers felt well prepared to utilize technology in educating their students.

eMINTS led to documented, improved student performance on standardized tests in language arts, science, mathematics and social studies.

that is active in Missouri called eMINTS (enhancing Missouri's Instructional Networked Teaching Strategies)⁷. eMINTS-4-Utah will be active in the Granite, Duchesne, Ogden, Tintic, and Salt Lake School Districts. A grant of \$800,000 was approved to fund the project, which focuses on low-performing schools. In Missouri, this program led to documented, improved student performance on standardized tests in language arts, science, mathematics and social studies. Specifically, participating teachers complete 100 hours of professional development training aimed at integrating multimedia technology and the core curricula in the most effective ways. Through this training, teachers are able to share successes and failures, thus increasing effectiveness across the board.

eMINTS is not solely focused on teacher development, however. Workshops also focus on increasing parental involvement in the child's education and improving student access to technology in low-income and rural environments. Two of the largest barriers to student success, particularly as it relates to technology for these students, have been lack of access and parental support. eMINTS is unique, in that it integrates parental involvement with including technology in the core curriculum.

In a second grant-based program in the same category, Logan and Ogden School Districts will attempt to use technology and existing resources (teachers who have proven effective in integrating technology and the curricula) in summer programs that will focus on helping struggling students from high-poverty schools achieve success via the use of technology. This program focuses on applied technology training in the summer that will, hopefully, be more accessible to these students. In addition, it offers low-income students an opportunity to expand their technological knowledge in ways they otherwise would not have had access to.

Finally, Piute, Juab, and North Sanpete School Districts have five schools participating in a program that focuses on the earlier adoption of technology into the classroom. By introducing technology in the form of scanners, digital cameras, and special keyboarding devices, into the classroom at earlier grades, this program will test whether it is more effective to focus on technological education at younger ages. This program will, hopefully, provide unique data as to the efficacy of technology programs that focus on the earlier grades, as opposed to the previous two programs, which do not focus on any particular grade level.

Infrastructure Improvement and Technical Support

The second largest grant received in Utah last year was awarded to a program named CyberCorps, which will operate in the Iron, Washington, Kane, Garfield, Beaver, Millard, Carbon, San Juan, Grand, Piute, Uintah, Rich, and South Sanpete Districts. Thirty-two selected schools within these districts will participate in this unique program.

CyberCorps attempts to take advantage of the knowledge gap that exists between students and teachers in the field of technology. One continually observed phenomena is that some students who have a high aptitude for technology consistently are better equipped to act as information technology experts than their teachers. In order to take advantage of this, CyberCorps selects students and teachers to participate in "boot camp" programs that instruct them on the latest technology for the coming school year. These students then act as instructors and backup for their teachers, resulting in two positive gains. First, these students are given job study credit for their work. This introduces them to a type of training in the school setting they would not otherwise have received. Second, teachers are given access to the best instruction throughout the school year in the form of their students.

They can then pass on this year-round learning in the subsequent years. This allows rural schools, who may not have access or funding for computer scientists on site to maximize their return from their existing resources for technology.

Professional Development for Technology Leadership

Tools for New Teachers, which will be operational throughout the Nebo School District next year, attempts to solve the problem of novice teachers who feel overwhelmed by technological challenges faced in their first years of teaching, as evidenced in the aforementioned Education Week study. This program selects teachers who have already proven to be effective utilizers of technology, who will participate in training so that they can then mentor incoming teachers. This program, like CyberCorps, attempts to solve the problem of the knowledge gap by more effectively utilizing existing resources in the hopes that it will translate to positive gains in the classroom.

These programs will be tracked at the state level for the next five years to measure their affect on student and teacher attitudes toward technology, successful integration and effects on test scores. Since they coincide with the codification of outcomes-based education in the form of No Child Left Behind, they will offer education researchers in Utah an unparalleled opportunity to isolate the effects of technology programs on student performance. Hopefully future SAT 9 results will show tangible results concurrent with the programs outlined above. The data below, which are the SAT 9 results for 2002, may be useful as a baseline on which to measure future achievement.

Test Results for 2002

Figure 4 shows Utah’s statewide results on the SAT 9 in each area, including complete battery since 1998. Scores for third graders continue to lag far behind the national average in language. While these scores approach the national median score in the fifth grade, they return to sub-average results in the eighth and eleventh grades. In keeping with areas where Utahns have traditionally shown excellence, Utah’s school children scored remarkably well in science in all grade levels. The apparent drop in scores at the third grade level in the “environment” area (which contains science results for third graders) is not necessarily indicative of a shortcoming in the early grades in science because this test also includes social science questions—an area in which Utah’s school children traditionally achieve average results. The lower third grade score in the environment section is likely the result of combining social science and science results. The fifth grade maintained its 60th percentile score

Figure 4

SAT 9 Results by Grade and Subject: 1998-2002*

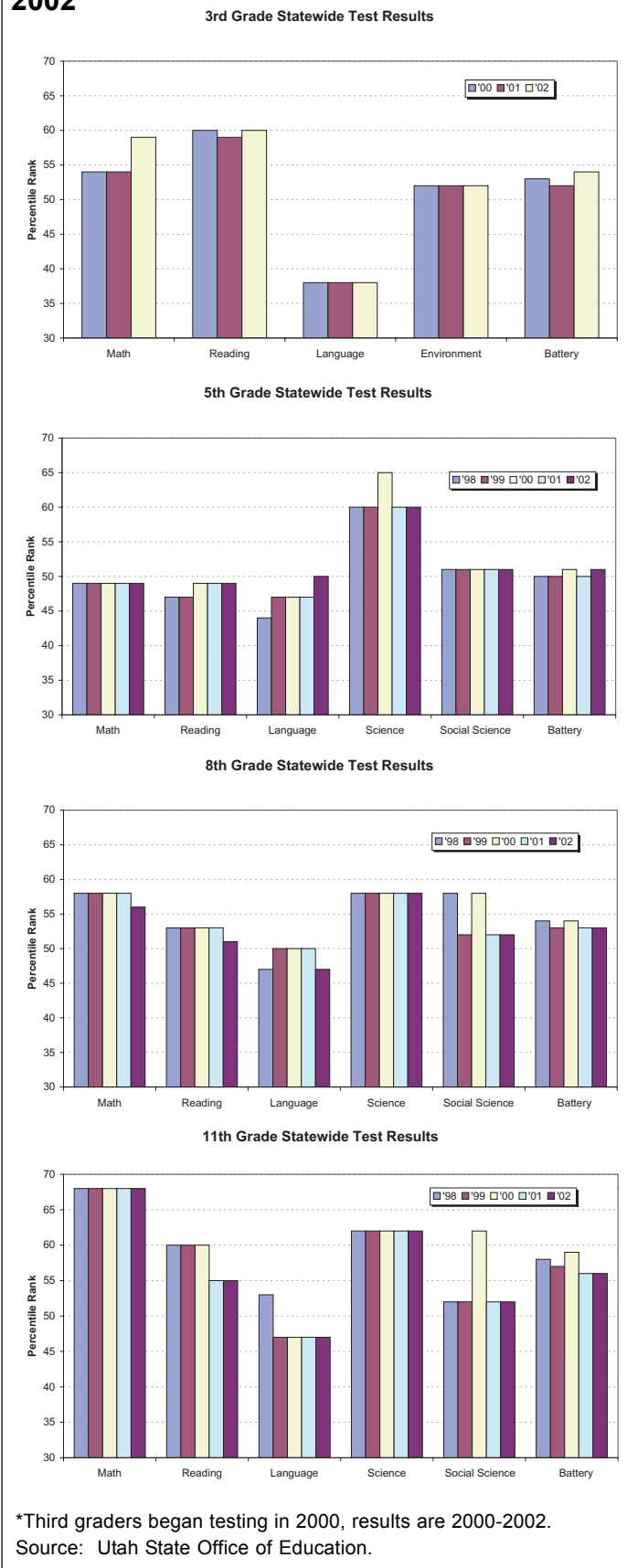
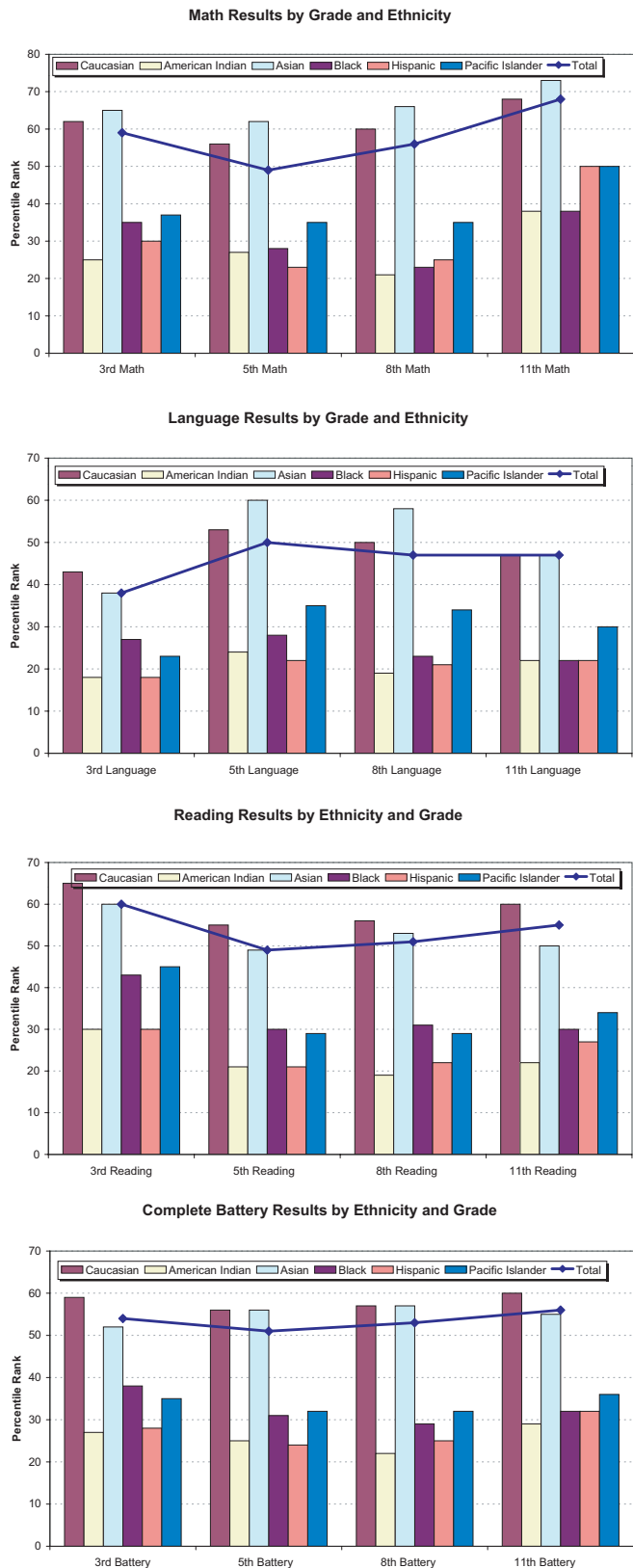


Figure 5

SAT 9 Results by Grade Level, Subject and Ethnicity: 2002



Source: Utah State Office of Education.

from last year in science. Eighth and eleventh grade scores have not fluctuated in science since 1998, and are both significantly above the 50th percentile level. However, social science results for eighth and eleventh graders, which had been fluctuating greatly, seem to have leveled out, with each grade achieving the same score as last year.

SAT 9 Scores by Ethnicity

For the first time this year, SAT 9 results were disaggregated by race. This allowed Utah Foundation a unique opportunity to begin tracking improvement on this standardized test for each racial sub-group. While the SAT 9 is not the test in use to check Utah's adherence to NCLB, it is always useful to have additional measures of Utah's effectiveness in eliminating racial achievement gaps.⁸ Figure 5 shows the dramatic gaps in achievement that exist between racial groups. For example, while complete battery scores for Caucasian and Asian students are consistently above the 50th percentile at all grade levels, their Black, Hispanic, Pacific Islander, and American Indian counterparts are all scoring below the 40th percentile. Hispanic and American Indian students are consistently scoring below the 30th percentile. Disturbingly, while Caucasian and Asian scores increase with age, all other ethnic groups are seeing scores that decrease until the eleventh grade. Unfortunately, this increase in the eleventh grade, which still fails to surpass the 50th percentile mark, is likely the result of high dropout rates among ethnic students rather than an actual increase in achievement.

Conclusion

While the current literature on technology's impact on education is lacking conclusive evidence of a positive correlation between technology and achievement, there are many reasons for Utahns to be optimistic about the future of technology and education. Utahns have not only succeeded in creating one of the most advanced technological environments in the country, they have done so with a low per pupil expenditure. Additionally, the future of technology programs for Utah's children looks increasingly bright with the innovative use of federal grant money.

Once again the SAT 9 has confirmed that Utah's students, at all grade levels, are at least average in most subjects. However, the data that has been disaggregated by race highlights disturbing trends for Utah's education system. Grant programs such as those being utilized by the Logan and Ogden School Districts, which focus on utilizing technology to aid struggling students will become

more and more important in dealing with these types of trends. This is particularly true because Utah is becoming more, not less, ethnically diverse.

Researchers also have reason to be optimistic in this environment, as these grant programs will provide significant amounts of data as to what succeeds and what doesn't. Additionally, the targeted nature of these programs allows researchers to finally have access to the elusive control group in order to highlight the effects of technology. In order to take advantage of this unique opportunity, policymakers and education administrators should make a concerted effort to rigorously track the success of these grant programs. This will not only ensure that in the future, Utah's scarce education dollars will be spent wisely, but also help keep Utah at the forefront of utilizing technology in education. Additionally, it could help ensure that solutions are found to the troubling ethnic achievement gaps that are developing.

Endnotes:

¹ Fouts, Jeffery T, Ph.D. . Research on Computers and Education: Past, Present and Future. Prepared for the Bill and Melinda Gates Foundation. Feb. 2000. Available online at <http://www.gatesfoundation.org/nr/downloads/ed/researchevaluation/ComputerResearchSummary.pdf>.

² For a more complete discussion of test bias see Utah Foundation Research Report #649. Available online at <http://www.utahfoundation.org/pdf/rr649.pdf>.

³ Bangert-Drowns, Robert L. and Rudner, Lawrence M. "Meta-Analysis in Education Research." In Practical Assessment, Research & Evaluation. Volume 8. 1991. Available online at <http://edresearch.org/pare/getvn.asp?v=2&n=8>.

⁴ Table excerpted from Kulik, James A. (1994). Meta-Analytic Studies of Findings on Computer-Based Instruction; used in Schacter, John The Impact of Education Technology on Student Achievement: What the Most Current Research has to Say; commissioned by the Milken Exchange on Education Technology. 1999.

⁵ Baker, E.L., Gearhart, M. & Herman, J.L. (1994) Evaluating the Apple Classrooms of Tomorrow. In E.L. Baker, and H.F. O'Neil, Jr. (Eds.). Technology Assessment in Education and Training. Lawrence Erlbaum Publishers.

⁶ For a more detailed discussion of all of the results of this study go to: <http://www.edweek.org/sreports/TC03/article.cfm?slug=35exec.h22>.

⁷ More information on eMINTS is available online at <http://emints.more.net>.

⁸ For a more complete discussion of the implications race and ethnicity can have on a student's performance please see last year's school test score report, available online at <http://www.utahfoundation.org/pdf/rr649.pdf>.

These grant programs will provide significant amounts of data as to what succeeds and what doesn't.

Appendix A: Fall 2002 SAT 9 Test Scores by School

District/School	2002			2002 Expected Battery	Test Scores by Year (Median Percentile Rank)														
	Students Tested		% Free Lunch		Battery			Math			Reading			Language			Environment		
	Count	%			00	01	02	00	01	02	00	01	02	00	01	02	00	01	02
3rd Grade	3794	97	13	49 - 64	59	55	61	59	54	59	65	60	66	43	43	50	62	62	62
ALPINE	3794	97	13	49 - 64	59	55	61	59	54	59	65	60	66	43	43	50	62	62	62
ALPINE ELEMENTARY	68	99	3	54 - 76	66	67	71	71	71	83	66	67	73	59	59	59	68	73	68
ASPEN ELEMENTARY	93	94	19	46 - 70	52	44	55	48	52	48	55	51	65	43	38	50	52	42	42
BARRATT ELEMENTARY	74	99	8	52 - 74	51	58	71	52	71	80	57	66	73	38	38	63	52	52	68
BONNEVILLE ELEMENTARY	113	98	11	50 - 73	55	57	61	59	52	62	57	63	69	38	50	50	52	62	52
CASCADE ELEMENTARY	92	98	10	51 - 74	62	61	61	65	59	54	67	65	69	50	50	59	68	68	68
CEDAR RIDGE ELEMENTARY	92	96	6	53 - 75	68	59	62	62	48	59	75	65	67	59	50	43	68	68	73
CEDAR VALLEY ELEMENTARY	26	92	9	51 - 74	26	36	47	22	30	54	22	40	57	16	27	34	42	42	52
CENTRAL ELEMENTARY	68	94	27	42 - 66	55	57	62	54	52	68	66	63	67	43	50	50	62	52	62
CHERRY HILL ELEMENTARY	93	100	23	44 - 68	50	54	50	52	54	52	57	53	55	34	30	34	52	62	52
DEERFIELD ELEM	88	100		-			62			62			66			43			62
EAGLECREST ELEMENTARY	189	99	4	54 - 76	61	57	61	68	62	62	63	62	62	50	43	50	62	52	68
FOOTHILL ELEMENTARY	68	96	9	51 - 74	61	57	66	59	48	65	69	57	70	50	43	63	62	68	68
FORBES ELEMENTARY	77	100	17	47 - 71	54	51	58	52	40	54	65	59	57	43	43	50	62	62	73
GENEVA ELEMENTARY	80	95	40	36 - 60	49	44	54	42	45	62	59	50	57	30	30	43	42	52	42
GREENWOOD ELEMENTARY	78	95	28	42 - 66	42	40	44	40	35	37	53	51	53	30	34	30	31	35	42
GROVECREST ELEMENTARY	124	99	9	51 - 74	61	51	64	62	48	68	65	59	66	50	43	50	68	52	68
HIGHLAND ELEMENTARY	151	97	3	54 - 76	63	65	66	65	59	65	69	70	70	50	59	50	62	68	73
HILLCREST ELEMENTARY	61	87	22	45 - 68	63	61	58	52	54	59	66	66	73	63	43	43	68	79	62
LEGACY ELEMENTARY	150	99	4	54 - 76	63	56	67	62	54	71	66	59	70	50	38	59	68	62	68
LEHI ELEMENTARY	84	90	14	49 - 72	54	58	54	52	54	54	65	65	59	38	50	38	52	68	62
LINDON ELEMENTARY	67	100	9	51 - 74	54	57	58	45	68	59	53	57	62	50	38	59	62	62	62
MANILA ELEMENTARY	97	93	7	52 - 75	60	60	61	62	62	59	63	66	69	43	50	50	68	62	68
MEADOW ELEMENTARY	78	96	15	48 - 71	54	49	58	59	45	62	53	53	69	38	38	43	62	52	62
MT. MAHOGANY ELEMENTARY	110	98	21	45 - 69	41	43	45	42	40	37	48	48	57	34	34	34	42	42	35
NORTHRIDGE ELEMENTARY	111	99	10	51 - 74	65	66	64	65	65	74	69	73	69	50	59	50	73	68	68
ORCHARD ELEMENTARY	105	96	14	49 - 72	57	53	61	54	48	59	66	55	67	34	34	50	73	79	62
OREM ELEMENTARY	115	97	11	50 - 73	61	62	60	54	54	48	69	70	67	50	50	50	68	62	62
PONY EXPRESS E	133	98		-			56			52			65			50			52
ROCKY MOUNTAIN ELEM	100	100	5	53 - 76	63	58	59	68	59	62	66	60	63	50	38	43	73	68	62
SCERA PARK ELEMENTARY	61	95	16	48 - 71	60	67	71	48	68	74	70	71	77	59	59	63	68	68	73
SEGO LILY ELEMENTARY	105	98	6	53 - 75	66	54	66	65	54	65	66	57	67	59	43	63	73	62	73
SHARON ELEMENTARY	49	94	37	37 - 61	45	28	31	54	24	24	60	37	36	30	18	23	35	31	35
SHELLEY ELEMENTARY	132	95	8	52 - 74	64	57	58	62	59	52	67	60	63	50	38	38	73	68	68
SNOW SPRINGS ELEMENTARY	121	98	8	52 - 74	60	52	64	59	45	59	69	60	71	50	43	59	62	52	62
SUNCREST ELEMENTARY	81	85	32	40 - 64	39	46	52	48	48	54	44	57	62	30	27	30	35	35	52
VALLEY VIEW ELEMENTARY	75	100	10	51 - 74	55	57	58	52	48	52	66	65	69	43	50	50	52	52	52
VINEYARD ELEMENTARY	105	99	16	48 - 71	62	51	53	62	54	42	65	59	62	59	38	43	68	52	62
WESTFIELD ELEMENTARY	118	97	4	54 - 76	62	59	59	65	59	59	65	59	65	50	43	50	68	68	62
WESTMORE ELEMENTARY	81	89	35	38 - 62	59	45	49	62	40	48	65	53	59	38	34	30	62	42	35
WINDSOR ELEMENTARY	84	94	29	41 - 65	51	43	56	52	40	54	62	48	62	43	30	38	52	52	62
BEAVER	107	95	40	43 - 59	49	49	50	45	52	48	60	50	57	34	38	34	42	62	62
BELKNAP ELEMENTARY	62	97	48	32 - 56	51	45	48	45	45	52	63	53	57	34	38	34	42	52	42
MILFORD ELEMENTARY	32	100	53	30 - 53	34	54	42	25	62	42	44	50	36	27	43	30	31	68	62
MINERSVILLE ELEMENTARY	13	77	51	31 - 54	60	51	70	62	52	71	65	55	76	63	34	68	62	42	73
BOX ELDER	775	97	32	45 - 60	51	50	54	52	45	52	57	55	60	38	38	38	62	52	52
BUNDERSON ELEMENTARY	69	100	37	37 - 61	45	48	51	42	54	45	48	44	53	30	30	38	52	68	52
CENTURY ELEMENTARY	60	95	31	40 - 64	60	52	43	59	48	37	66	66	53	38	34	27	62	62	42
CORINNE ELEMENTARY	24	100	46	33 - 57	42	59	50	59	54	52	51	67	59	23	59	43	26	52	35
DISCOVERY ELEMENTARY	71	100	38	37 - 61	48	53	50	45	45	54	53	57	62	34	34	34	62	62	52
FIELDING ELEMENTARY	41	100	42	35 - 59	50	47	44	52	40	35	57	62	53	30	34	34	52	26	42
FOOTHILL ELEMENTARY	53	98	36	38 - 62	65	59	54	68	59	52	67	62	62	59	50	43	68	62	42
GARLAND ELEMENTARY	57	96	42	35 - 59	51	43	50	42	30	59	66	46	55	38	27	38	52	42	42
GROUSE CREEK ELEMENTARY	1	100	45	34 - 57	27	19	75	19	40	91	35	12	59	34	16	68	18	9	68
HOWELL ELEMENTARY	5	100	84	18 - 38	82	54	50	74	48	27	86	50	46	59	50	34	90	52	68
LAKE VIEW ELEMENTARY	66	91	32	40 - 64	51	47	56	54	52	54	53	57	60	38	30	38	52	42	52
MCKINLEY ELEMENTARY	84	98	48	32 - 56	42	44	57	42	48	54	45	48	59	27	30	43	35	42	52
MOUNTAIN VIEW ELEMENTARY	54	100	41	35 - 59	67	55	60	62	48	62	60	60	66	78	59	50	73	42	52
NORTH PARK ELEMENTARY	94	95	29	41 - 65	52	42	51	45	35	52	57	46	63	38	27	38	62	42	42
PARK VALLEY ELEMENTARY	2	100	70	23 - 45	46	47	43	65	48	35	40	40	59	21	59	18	22	52	31
PERRY ELEM	90	94	30	41 - 65			56			48			63			43			62
SNOWVILLE ELEMENTARY	4	100	50	31 - 55	27	48	22	20	30	37	34	51	8	27	38	21	31	85	31
CACHE	1048	94	27	46 - 61	62	60	61	62	59	62	69	67	69	50	50	50	62	62	62
GREENVILLE ELEMENTARY	191	96	25	43 - 67	65	67	63	62	68	62	70	69	69	50	59	50	68	68	62
LEWISTON ELEMENTARY	104	99	44	34 - 58	61	44	57	59	40	52	69	53	69	43	34	50	62	35	42
LINCOLN ELEMENTARY	85	96	46	33 - 57	47	40	47	45	42	45	55	57	57	30	30	34	35	26	35
MILLVILLE ELEMENTARY	83	93	38	37 - 61	69	69	70	65	68	68	70	76	76	59					

District/School	2002			2002 Test Scores by Year (Median Percentile Rank)																	
	Students Tested		% Free	Expected Battery	Battery			Math			Reading			Language			Environment				
	Count	%	Lunch		00	01	02	00	01	02	00	01	02	00	01	02	00	01	02		
3rd Grade																					
WELLSVILLE ELEMENTARY	87	95	30	41	-	65	59	68	68	65	71	71	66	73	70	50	63	63	62	73	68
CARBON	258	93	47	42	-	57	44	50	50	45	54	52	53	55	57	30	34	34	42	42	42
CASTLE HEIGHTS ELEM	66	97	55	29	-	52	54	55	48	59	59	48	59	57	55	34	34	38	62	52	42
CREEKVIEW ELEMENTARY	62	94	53	30	-	53	47	60	59	52	77	62	60	67	67	34	34	38	42	62	52
MAURO, SALLY ELEMENTARY	50	94	46	33	-	57	43	40	53	40	42	54	53	41	67	27	30	38	42	42	42
PETERSEN ELEMENTARY	22	100	77	20	-	41	30	39	28	25	24	24	35	44	37	23	27	21	35	35	22
WELLINGTON ELEMENTARY	48	100	54	30	-	53	41	51	44	35	54	54	44	59	45	27	38	30	42	42	31
DAGGETT	13	100	33	45	-	60	41	45	43	45	54	68	36	57	28	34	30	38	35	42	52
FLAMING GORGE ELEMENTARY	4	100	0	56	-	78	41	69	62	25	65	86	59	77	53	34	50	68	35	73	73
MANILA ELEMENTARY	9	100	44	34	-	58	40	44	30	45	54	42	34	57	12	27	30	23	31	42	42
DAVIS	4338	96	21	47	-	63	58	59	58	59	59	59	63	65	63	43	43	43	62	62	62
ADAMS ELEMENTARY	100	97	12	50	-	73	70	63	56	74	68	65	73	71	59	63	50	38	79	62	62
ADELAIDE ELEMENTARY	90	100	21	45	-	69	65	64	58	68	71	52	67	66	67	59	43	43	68	68	62
ANTELOPE ELEMENTARY	92	93	56	29	-	52	40	35	36	40	37	30	50	40	41	27	21	23	35	35	42
BLUFF RIDGE ELEMENTARY	160	97	23	44	-	68	62	63	59	65	65	62	67	65	63	59	59	43	62	62	62
BOULTON ELEMENTARY	76	97	11	50	-	73	64	62	68	71	62	68	67	71	67	50	50	59	68	68	73
BOUNTIFUL ELEMENTARY	59	100	24	44	-	67	60	62	65	65	62	71	66	66	69	50	43	38	52	68	62
BURTON ELEMENTARY	84	96	19	46	-	70	59	63	63	59	62	71	66	66	67	43	50	59	68	68	52
CENTERVILLE ELEMENTARY	47	100	14	49	-	72	60	62	60	59	59	54	70	63	66	50	50	59	62	68	62
CLINTON ELEMENTARY	108	100	31	40	-	64	37	40	45	35	35	37	39	41	55	27	30	30	35	42	42
COLUMBIA ELEMENTARY	108	99	15	48	-	71	58	63	63	62	68	65	62	66	69	43	50	50	62	68	62
COOK ELEMENTARY	102	94	28	42	-	66	60	61	62	59	59	65	60	57	67	50	59	50	62	68	68
CREEKSIDE ELEMENTARY	106	98	20	46	-	69	64	64	63	62	65	65	69	67	67	50	59	50	68	62	68
CRESTVIEW ELEMENTARY	74	92	39	36	-	60	46	45	49	42	40	52	53	55	57	27	34	43	52	35	42
DOXEY ELEMENTARY	60	93	43	34	-	58	37	33	31	35	35	27	45	35	39	27	21	21	35	26	31
EAST LAYTON ELEMENTARY	86	100	10	51	-	74	66	58	60	65	52	54	71	57	69	59	38	38	73	62	62
FARMINGTON ELEMENTARY	71	97	15	48	-	71	65	55	59	65	52	54	71	63	69	43	43	43	68	62	62
FREMONT ELEMENTARY	55	95	44	34	-	58	28	30	39	24	25	27	32	32	51	23	21	30	31	35	35
HERITAGE ELEM	89	97							60						67						52
HILLFIELD ELEMENTARY	95	95	35	38	-	62	46	50	43	48	42	40	62	62	53	30	38	27	35	42	42
HOLBROOK ELEMENTARY	64	95	16	48	-	71	61	63	66	62	54	62	62	62	66	63	59	59	62	73	73
HOLT ELEMENTARY	102	95	32	40	-	64	52	53	44	52	52	40	65	65	57	38	34	30	42	42	35
KAYSVILLE ELEMENTARY	93	99	15	48	-	71	54	62	75	52	62	77	57	70	80	34	50	68	68	68	79
KING ELEMENTARY	112	98	23	44	-	68	57	61	55	54	71	59	62	66	59	43	50	38	52	52	68
KNOWLTON ELEMENTARY	97	99	11	50	-	73	59	59	67	62	65	74	66	70	70	38	43	50	62	62	73
LAKESIDE ELEMENTARY	94	99	20	46	-	69	47	50	55	48	45	62	51	62	62	34	43	38	52	42	52
LAYTON ELEMENTARY	94	90	32	40	-	64	58	54	42	59	52	40	66	57	55	50	38	27	62	62	52
LINCOLN ELEMENTARY	89	96	35	38	-	62	42	42	48	42	48	48	48	51	59	30	34	34	35	42	42
MEADOWBROOK ELEMENTARY	79	92	31	40	-	64	62	54	60	59	54	65	63	60	66	50	38	50	73	62	52
MONTE VISTA ELEMENTARY	49	94	11	50	-	73	58	67	49	65	71	42	65	67	51	38	59	43	62	68	52
MORGAN ELEMENTARY	82	100	8	52	-	74	69	67	65	74	68	62	71	70	70	63	59	43	68	68	68
MOUNTAINVIEW ELEMENTARY	103	72	15	48	-	71	65	61	62	71	59	62	69	65	62	63	50	50	68	68	68
MUIR ELEMENTARY	60	95	13	49	-	72	64	63	71	65	68	74	71	66	76	59	50	59	68	62	79
OAK HILLS ELEMENTARY	58	95	7	52	-	75	73	72	69	74	68	65	76	77	75	68	63	59	73	79	73
ORCHARD ELEMENTARY	100	95	22	45	-	68	64	63	65	65	59	62	70	75	71	59	50	50	62	62	68
READING ELEMENTARY	84	100	9	51	-	74	69	78	72	74	86	77	71	77	78	50	68	50	68	73	73
SOUTH CLEARFIELD ELEM	75	99	56	29	-	52	41	41	35	42	40	35	44	55	43	38	27	23	31	35	35
SOUTH WEBER ELEMENTARY	98	99	10	51	-	74	57	58	60	59	59	65	62	63	65	50	38	43	62	68	62
STEWART ELEMENTARY	86	95	9	51	-	74	64	61	63	62	68	65	71	70	70	50	43	50	68	62	68
SUNSET ELEMENTARY	67	96	47	33	-	56	46	37	40	45	35	42	45	43	44	30	30	30	42	35	35
SYRACUSE ELEMENTARY	121	98	15	48	-	71	54	49	52	62	48	54	57	57	60	38	30	38	62	42	52
TAYLOR ELEMENTARY	49	100	15	48	-	71	56	66	65	54	68	59	62	70	69	59	63	63	68	68	68
TOLMAN ELEMENTARY	60	100	22	45	-	68	59	59	57	54	54	59	66	69	69	43	43	38	62	68	52
VAE VIEW ELEMENTARY	76	95	52	30	-	54	35	29	31	27	25	24	35	32	32	23	21	18	42	35	35
VALLEY VIEW ELEMENTARY	67	91	12	50	-	73	82	81	81	86	80	80	81	86	87	74	78	68	85	90	79
WASATCH ELEMENTARY	49	88	57	28	-	51	45	30	32	45	35	35	51	28	39	30	23	21	42	26	31
WASHINGTON ELEMENTARY	29	90	40	36	-	60	71	67	44	80	77	54	67	66	51	63	59	34	68	62	42
WEST BOUNTIFUL ELEM	83	98	20	46	-	69	56	55	59	59	54	59	63	65	65	43	34	50	52	52	73
WEST CLINTON ELEMENTARY	107	95	24	44	-	67	35	44	43	40	54	42	37	48	51	23	34	30	42	35	42
WEST POINT ELEMENTARY	71	100	19	46	-	70	62	63	62	65	59	62	66	70	67	50	50	50	68	68	62
WHITESIDES ELEMENTARY	71	94	46	33	-	57	40	45	35	35	32	35	53	59	44	27	34	18	35	42	35
WINDRIDGE ELEMENTARY	96	100	9	51	-	74	62	68	60	71	74	68	70	71	65	43	50	38	62	68	62
WOODS CROSS ELEMENTARY	115	97	22	45	-	68	49	55	52	48	48	45	57	63	60	34	38	38	42	52	52
DUCHESNE	308	96	40	43	-	59	43	47													

District/School	2002			2002 Expected Battery	Test Scores by Year (Median Percentile Rank)														
	Students Tested		% Free Lunch		Battery			Math			Reading			Language			Environment		
	Count	%			00	01	02	00	01	02	00	01	02	00	01	02	00	01	02
3rd Grade																			
CASTLE DALE ELEMENTARY	21	100	41	35 - 59	54	52	51	48	52	48	59	45	37	38	38	38	62	52	62
CLEVELAND ELEMENTARY	15	100	50	31 - 55	57	43	76	62	48	86	69	41	76	50	30	74	42	35	68
COTTONWOOD ELEMENTARY	24	96	34	39 - 63	57	50	48	54	48	45	60	46	50	38	43	34	62	42	35
FERRON ELEMENTARY	34	97	48	32 - 56	57	50	65	59	52	68	60	55	67	38	38	43	62	52	68
HUNTINGTON ELEMENTARY	39	92	55	29 - 52	49	45	55	54	48	59	57	57	62	34	30	34	31	31	52
GARFIELD	81	96	47	42 - 57	54	47	48	59	42	42	60	50	55	38	34	34	52	52	42
ANTIMONY ELEMENTARY	4	100	94	15 - 33	63	51	51	65	37	27	57	62	53	50	74	34	68	35	85
BOULDER ELEMENTARY	6	100	50	31 - 55	24	34	22	65	42	9	16	23	32	16	14	27	26	68	18
BRYCE VALLEY ELEMENTARY	17	94	65	25 - 47	47	44	37	37	32	30	60	46	53	30	23	23	52	52	35
ESCALANTE ELEMENTARY	13	92	53	30 - 53	62	53	32	68	59	37	57	50	28	43	34	21	52	73	18
PANGUITCH ELEMENTARY	42	95	49	32 - 55	47	43	62	45	40	68	66	55	59	38	30	43	35	42	62
GRAND	106	91	44	43 - 58	54	55	47	48	52	45	57	62	53	43	43	38	52	52	52
RED ROCK ELEMENTARY	106	91	47	33 - 56	54	55	47	48	52	45	57	62	53	43	43	38	52	52	52
GRANITE	5226	93	29	46 - 61	45	47	46	48	48	52	51	55	53	30	34	30	42	42	42
ACADEMY PARK ELEMENTARY	96	100	43	34 - 58	37	33	36	40	35	37	44	37	40	23	23	34	42	31	31
ARCADIA ELEMENTARY	59	98	30	41 - 65	37	38	39	40	40	35	41	43	39	23	27	34	31	35	42
BACCHUS ELEMENTARY	116	100	31	40 - 64	50	49	48	54	54	45	60	63	57	34	34	38	42	35	42
BEEHIVE ELEMENTARY	98	98	29	41 - 65	56	53	39	65	59	45	62	57	39	38	43	23	52	42	42
BENNION ELEMENTARY	97	96	23	44 - 68	62	55	57	62	65	54	70	66	62	50	34	38	62	52	62
BRIDGER ELEMENTARY	112	88	33	39 - 63	35	50	49	35	52	45	37	57	57	23	30	38	26	42	42
CANYON RIM ELEMENTARY	58	98	34	39 - 63	56	51	47	54	62	52	59	65	50	43	38	38	52	35	42
COPPER HILLS ELEMENTARY	110	88	43	34 - 58	40	41	39	42	45	45	45	46	40	30	34	30	35	35	42
COTTONWOOD ELEMENTARY	85	95	4	54 - 76	55	65	71	52	62	80	63	73	71	38	50	43	52	68	73
CRESTVIEW ELEMENTARY	76	99	14	49 - 72	61	65	71	62	62	74	69	73	71	43	50	63	62	68	73
DRIGGS ELEMENTARY	89	99	5	53 - 76	67	73	67	71	74	71	70	75	76	59	68	59	68	73	62
EASTWOOD ELEMENTARY	70	99	5	53 - 76	71	71	68	77	77	74	75	71	67	63	63	63	68	73	68
FARNSWORTH ELEMENTARY	101	86	37	37 - 61	34	45	40	32	45	54	39	57	37	18	30	23	31	35	31
FOX HILLS ELEMENTARY	118	93	44	34 - 58	43	35	39	42	37	42	46	40	44	30	27	30	42	35	35
FOX HILLS MGN	27	100	15	48 - 71	40	47	94	35	45	96	55	43	94	27	38	86	31	52	93
FREMONT ELEMENTARY	75	93	36	38 - 62	41	46	46	32	45	52	48	57	57	30	30	27	35	31	35
FROST ELEMENTARY	74	91	33	39 - 63	37	49	52	35	48	54	51	57	60	30	30	30	31	42	52
GOURLEY ELEMENTARY	104	88	54	30 - 53	28	33	35	25	37	35	35	39	34	14	21	23	26	35	35
GRANGER ELEMENTARY	95	89	57	28 - 51	37	46	44	48	52	59	39	57	53	21	34	27	31	35	31
HILLSDALE ELEMENTARY	108	95	54	30 - 53	43	36	29	54	48	42	51	44	29	27	21	16	31	26	31
HILLSIDE ELEMENTARY	102	100	33	39 - 63	50	53	49	54	48	48	57	67	62	30	34	38	52	52	42
HILLVIEW ELEMENTARY	65	91	28	42 - 66	59	52	54	62	48	54	65	62	50	50	38	43	62	42	42
HUNTER ELEMENTARY	112	90	40	36 - 60	50	37	39	48	42	40	59	37	45	38	27	27	52	35	35
JACKLING ELEMENTARY	106	95	32	40 - 64	35	34	33	32	27	42	44	39	36	21	23	18	35	26	31
LAKE RIDGE ELEMENTARY	85	96	42	35 - 59	33	43	36	25	45	37	41	51	44	21	34	21	31	42	31
LINCOLN ELEMENTARY	63	71	56	29 - 52	27	42	36	32	52	45	26	48	36	16	21	23	26	42	31
MAGNA ELEMENTARY	112	95	43	34 - 58	41	42	39	45	42	40	44	50	45	27	27	21	35	35	31
MEADOW MOOR ELEMENTARY	64	83	18	47 - 70	60	63	64	59	65	68	69	59	69	50	59	50	52	68	62
MILL CREEK ELEMENTARY	47	100	38	37 - 61	48	48	38	52	48	40	55	59	45	27	34	23	52	35	35
MONROE ELEMENTARY	96	94	55	29 - 52	38	35	37	42	48	45	41	37	46	27	21	23	35	26	26
MORNINGSIDE ELEMENTARY	41	88	7	52 - 75	67	60	65	62	62	54	77	69	77	43	38	43	68	62	68
MORNINGSIDE M	26	100	17	47 - 71	45	41	93	45	35	96	51	50	92	21	21	93	62	31	93
MOSS ELEMENTARY	65	92	42	35 - 59	40	44	37	48	48	48	45	48	35	27	30	27	26	35	31
OAKRIDGE ELEMENTARY	73	96	3	54 - 76	75	75	75	77	86	89	77	75	76	63	63	63	79	85	79
OAKWOOD ELEMENTARY	62	97	13	49 - 72	70	57	60	71	54	59	80	60	65	59	38	50	68	62	68
OQUIRRH HILLS ELEMENTARY	51	92	58	28 - 51	42	34	24	48	35	27	53	45	22	30	23	14	35	31	31
ORCHARD ELEMENTARY	106	92	37	37 - 61	42	61	52	52	68	52	44	69	60	23	43	34	42	52	52
PENN, WILLIAM ELEMENTARY	50	88	18	47 - 70	66	71	63	65	74	77	71	75	65	59	59	50	68	68	62
PIONEER ELEMENTARY	96	93	34	39 - 63	33	35	38	42	42	48	39	39	40	18	21	27	26	31	31
PLEASANT GREEN ELEM	110	94	53	30 - 53	38	38	38	42	37	45	43	50	48	21	23	23	35	26	31
PLYMOUTH ELEMENTARY	85	95	24	44 - 67	45	48	43	48	54	42	48	57	50	30	34	30	52	35	31
REDWOOD ELEMENTARY	70	89	61	26 - 49	20	32	21	24	45	24	17	37	18	14	18	12	22	22	18
ROLLING MEADOW ELEM	76	86	35	38 - 62	47	57	44	62	62	54	50	60	48	30	38	23	52	62	42
ROOSEVELT ELEMENTARY	76	83	54	30 - 53	44	41	45	52	48	59	55	48	46	30	23	30	35	31	35
ROSECREST ELEMENTARY	79	96	14	49 - 72	71	74	66	74	77	71	75	77	70	59	63	50	79	73	68
SANDBERG ELEMENTARY	85	81	33	39 - 63	41	49	35	35	42	32	45	60	35	34	38	30	52	42	35
SILVER HILLS ELEMENTARY	90	93	33	39 - 63	34	36	34	40	32	30	32	40	35	21	23	21	35	35	31
SMITH ELEMENTARY	81	100	23	44 - 68	41	51	37	32	54	32	51	59	44	23	34	30	42	52	35
SOUTH KEARNS ELEMENTARY	65	97	60	27 - 50	33	39	40	35	42	42	41	46	44	21	21	23	31	35	26
STANSBURY ELEMENTARY	95	94	70	23 - 45	28	21	32	37	27	45	25	25	39	16	12	16	26	18	22
TAYLORSVILLE ELEMENTARY	87	95	27	42 - 66	51	55	46	59	52	48	60	60	59	34	38	34	42	62	35
TRUMAN ELEMENTARY	78	87	26	43 - 66	46	46	44	48	48	37	57	57	57	30	30	30	42	35	35
TWIN PEAKS ELEMENTARY	50	88	17	47 - 71	59	47	56	62	45	68	63	57	63	50	34	43	42	52	62
UPLAND TERRACE ELEM	82	100	6	53 - 75	74	71	70	71	68	74	77	76	75	63	68	59	79	73	68
VALLEY CREST ELEMENTARY	120	95	38	37 - 61	46	47	38	52	48	45	44	53	40	38	43	23	42	35	35
VISTA ELEMENTARY	87	85	31	40 - 64	50	49	52	52	52	48	62	59	60	34	34	38	35	35	62
WEST KEARNS ELEMENTARY	104	92	56	29 - 52	32	32	33	45	35	45	36	35	40	16	18	18	26	31	22
WEST VALLEY ELEMENTARY	111	93	31	40 - 64	43	45	50	42	45	52	50	48	55	34	38	43	35	35	42

District/School	2002			2002 Expected Battery	Test Scores by Year (Median Percentile Rank)														
	Students Tested		% Free Lunch		Battery			Math			Reading			Language			Environment		
	Count	%			00	01	02	00	01	02	00	01	02	00	01	02	00	01	02
3rd Grade																			
WESTBROOK ELEMENTARY	93	97	33	39 - 63	55	48	60	65	42	59	66	55	67	34	38	50	52	42	62
WESTERN HILLS ELEMENTARY	72	83	59	27 - 50	33	40	34	32	48	37	36	39	39	18	27	21	35	35	31
WHITTIER ELEMENTARY	110	97	32	40 - 64	47	37	37	42	40	40	51	39	40	34	27	23	52	31	26
WILSON ELEMENTARY	78	90	64	25 - 48	33	29	21	42	35	25	43	32	23	18	18	14	26	26	18
WOODSTOCK ELEMENTARY	53	98	11	50 - 73	65	61	63	62	65	62	66	65	63	59	59	43	68	68	79
IRON	561	93	37	44 - 59	53	51	54	59	54	59	57	57	59	38	38	38	52	52	52
CEDAR EAST ELEMENTARY	83	99	40	36 - 60	48	48	54	54	45	62	53	57	65	27	34	38	52	52	52
CEDAR NORTH ELEMENTARY	76	99	39	36 - 60	54	51	52	59	59	59	57	57	50	34	38	34	52	52	52
CEDAR SOUTH ELEMENTARY	108	84	29	41 - 65	60	58	63	54	62	71	60	62	63	50	43	50	68	68	68
ENOCH ELEMENTARY	129	94	50	31 - 55	54	54	54	68	52	59	57	59	55	43	43	38	68	52	52
ESCALANTE ELEMENTARY	18	94	65	25 - 47	28	17	49	42	16	59	28	15	40	21	8	34	22	31	52
FIDDLERS CANYON ELEM	85	92	35	38 - 62	55	54	52	54	62	52	63	60	62	43	43	43	52	52	42
PAROWAN ELEMENTARY	57	100	47	33 - 56	45	55	44	54	62	42	44	60	57	30	38	34	42	52	42
JORDAN	5609	97	16	48 - 63	56	59	58	59	59	62	63	63	63	43	43	43	52	62	62
ALTA VIEW ELEMENTARY	95	96	18	47 - 70	72	69	81	74	71	89	78	75	84	68	63	68	73	73	85
ALTARA ELEMENTARY	98	100	13	49 - 72	60	62	60	59	65	65	63	69	70	50	50	43	62	52	52
BELL VIEW ELEMENTARY	80	100	23	44 - 68	49	57	56	45	52	62	55	65	62	34	50	43	52	52	52
BELLA VISTA ELEMENTARY	56	100	7	52 - 75	59	51	61	59	45	65	66	60	63	38	30	50	62	62	62
BLUFFDALE ELEMENTARY	111	97	14	49 - 72	50	59	60	54	68	65	55	66	63	34	38	50	52	62	52
BROOKWOOD ELEMENTARY	81	98	3	54 - 76	70	66	67	71	71	71	71	69	71	63	50	59	73	73	73
BUTLER ELEMENTARY	71	94	8	52 - 74	61	68	66	68	68	74	69	71	71	43	59	50	62	68	62
CANYON VIEW ELEMENTARY	71	97	4	54 - 76	66	69	74	74	74	80	63	69	67	50	63	68	68	68	73
COLUMBIA ELEMENTARY	113	98	37	37 - 61	39	40	40	37	42	45	46	46	46	27	30	30	35	35	42
COPPERVIEW ELEMENTARY	64	86	46	33 - 57	36	35	43	42	32	37	37	40	53	21	18	27	31	31	42
COTTONWOOD HEIGHTS ELEM	47	87	14	49 - 72	62	68	59	62	65	62	67	75	71	59	59	38	62	73	62
CRESCENT ELEMENTARY	126	100	17	47 - 71	57	52	60	54	54	59	65	63	65	43	34	43	52	52	62
DRAPER ELEMENTARY	140	99	10	51 - 74	61	64	58	65	71	68	67	67	62	43	50	38	62	68	68
EAST MIDVALE ELEMENTARY	77	92	38	37 - 61	38	35	42	42	42	45	46	41	51	27	21	27	31	26	35
EAST SANDY ELEMENTARY	88	100	17	47 - 71	52	49	65	62	48	65	59	51	65	34	30	59	52	52	62
EDGEMONT ELEMENTARY	108	96	20	46 - 69	57	57	57	62	54	59	66	65	62	38	43	38	52	52	62
ELK MEADOWS ELEMENTARY	134	99	11	50 - 73	57	51	55	62	52	54	66	59	63	43	38	38	62	52	52
GRANITE ELEMENTARY	99	100	6	53 - 75	59	65	56	62	68	52	63	66	67	50	59	43	62	68	42
HAYDEN PEAK ELEMENTARY	151	98	15	48 - 71	57	51	57	62	52	59	66	57	62	43	38	43	52	42	52
HEARTLAND ELEMENTARY	85	88	29	41 - 65	46	49	38	48	48	37	51	59	39	34	27	27	52	62	42
HERRIMAN ELEMENTARY	175	98	14	49 - 72	56	46	50	62	42	52	57	53	57	34	34	34	62	42	52
JORDAN HILLS ELEMENTARY	180	94	15	48 - 71	44	65	66	40	71	71	53	67	69	34	50	59	42	68	68
JORDAN RIDGE ELEMENTARY	147	93	7	52 - 75	62	70	72	62	77	80	67	71	75	50	63	63	68	68	68
LONE PEAK ELEMENTARY	116	99	3	54 - 76	60	57	63	65	59	62	69	67	73	50	43	50	62	62	68
MAJESTIC ELEMENTARY	59	86	44	34 - 58	40	43	41	45	45	40	43	39	39	30	38	34	42	42	42
MIDVALE ELEMENTARY	93	96	55	29 - 52	19	24	27	13	19	27	18	24	25	14	16	21	18	22	26
MIDVALLEY ELEMENTARY	90	98	22	45 - 68	50	49	52	52	48	52	53	57	51	27	34	34	52	62	62
MONTE VISTA ELEMENTARY	125	100	11	50 - 73	68	61	53	77	71	62	73	63	59	50	43	38	68	62	52
MOUNTAIN SHADOWS ELEM	137	100	19	46 - 70	49	48	65	54	59	71	48	51	66	30	30	59	52	52	62
MOUNTVIEW ELEMENTARY	56	91	27	42 - 66	52	49	56	59	48	68	66	57	69	30	38	43	42	62	42
OAK HOLLOW ELEMENTARY	131	100	7	52 - 75	56	61	61	52	62	62	62	69	69	43	43	38	62	62	68
OAKDALE ELEMENTARY	64	95	10	51 - 74	64	60	60	62	62	62	65	63	70	63	50	43	68	62	62
OQUIRRH ELEMENTARY	132	100	36	38 - 62	45	50	46	42	52	52	57	59	57	30	34	27	42	52	42
PARK LANE ELEMENTARY	88	100	7	52 - 75	66	65	61	62	62	54	76	73	71	59	59	50	62	68	62
PERUVIAN PARK ELEMENTARY	84	100	11	50 - 73	76	72	74	74	68	74	84	80	80	68	63	63	73	73	73
QUAIL HOLLOW ELEMENTARY	85	99	5	53 - 76	65	62	63	65	54	62	71	70	70	59	50	59	68	68	68
RIDGECREST ELEMENTARY	54	100	18	47 - 70	47	61	50	42	59	48	57	66	62	34	50	43	42	52	42
RIVERSIDE ELEMENTARY	126	98	25	43 - 67	52	42	39	54	52	42	57	50	40	34	30	27	52	35	42
RIVERTON ELEMENTARY	113	93	21	45 - 69	52	50	49	59	48	52	59	57	55	38	38	38	42	52	52
ROSAMOND ELEMENTARY	157	97	12	50 - 73	63	53	52	68	59	42	71	62	59	50	38	34	62	52	62
ROSE CREEK ELEMENTARY	156	98	12	50 - 73	57	62	60	59	62	54	63	69	69	43	50	43	52	62	62
SANDY ELEMENTARY	82	95	40	36 - 60	51	42	43	42	40	42	55	51	43	38	27	34	52	31	35
SILVER MESA ELEMENTARY	78	100	14	49 - 72	70	63	62	71	71	68	70	66	65	59	43	38	79	62	68
SOUTH JORDAN ELEMENTARY	99	94	11	50 - 73	60	63	67	65	65	68	66	67	71	50	59	59	68	62	62
SOUTHLAND ELEMENTARY	141	98	17	47 - 71	54	52	51	52	48	54	62	63	59	34	34	34	62	52	52
SPRUCEWOOD ELEMENTARY	151	99	10	51 - 74	61	62	62	62	65	65	66	70	69	43	50	50	62	62	62
SUNRISE ELEMENTARY	87	99	8	52 - 74	57	69	61	62	77	65	69	71	70	38	50	38	52	68	62
TERRA LINDA ELEMENTARY	140	96	25	43 - 67	44	39	39	48	35	40	53	48	45	34	23	30	35	35	42
WELBY ELEMENTARY	157	100	14	49 - 72	57	65	61	54	62	65	65	67	66	50	59	50	52	62	62
WEST JORDAN ELEMENTARY	92	95	26	43 - 66	51	44	47	48	52	54	62	51	51	34	30	38	52	35	42
WESTLAND ELEMENTARY	122	98	20	46 - 69	63	62	67	59	68	71	65	69	73	50	50	50	73	68	73
WESTVALE ELEMENTARY	135	93	19	46 - 70	53	49	55	54	54	62	57	51	57	30	38	38	52	42	62
WILLOW CANYON ELEMENTARY	71	90	8	52 - 74	61	54	60	62	59	54	63	62	69	50	38	50	68	52	62
JUAB	158	96	34	44 - 60															

District/School	2002			2002 Expected Battery	Test Scores by Year (Median Percentile Rank)														
	Students Tested		% Free		Battery			Math			Reading			Language			Environment		
	Count	%	Lunch		00	01	02	00	01	02	00	01	02	00	01	02	00	01	02
3rd Grade																			
LAKE POWELL ELEMENTARY	6	100	56	29 - 52	5	28	9	2	40	5	11	24	14	3	16	8	7	9	9
VALLEY ELEMENTARY	20	100	62	26 - 49	57	44	56	48	32	52	67	57	66	38	30	34	62	52	62
LOGAN	476	98	36	44 - 60	57	60	57	62	62	59	60	63	65	43	50	43	52	62	52
ADAMS ELEMENTARY	74	96	48	32 - 56	41	51	52	42	48	65	53	63	59	27	38	34	35	35	35
BOWEN, EDITH ELEMENTARY	51	98	15	48 - 71	73	61	68	77	54	62	80	69	73	63	43	59	73	68	68
ELLIS ELEMENTARY	73	99	50	31 - 55	55	62	47	59	62	37	59	59	53	50	50	27	52	68	35
HILLCREST ELEMENTARY	91	99	35	38 - 62	73	65	67	77	71	71	75	69	73	68	59	59	73	62	62
WILSON ELEMENTARY	84	100	36	38 - 62	57	58	57	54	59	59	66	62	67	34	50	43	68	68	52
WOODRUFF ELEMENTARY	103	98	54	30 - 53	40	56	50	40	62	52	43	57	57	27	50	43	35	52	42
MILLARD	247	96	38	44 - 59	51	56	51	48	54	48	65	66	62	34	43	38	52	52	42
DELTA NORTH ELEMENTARY	64	98	46	33 - 57	57	56	52	59	59	40	69	65	69	50	43	38	52	42	42
DELTA SOUTH ELEMENTARY	99	95	40	36 - 60	54	55	51	45	48	52	66	67	62	38	50	34	52	52	42
FILLMORE ELEMENTARY	82	96	50	31 - 55	41	56	50	48	59	45	57	63	57	27	38	43	35	62	42
MORGAN	120	93	16	48 - 63	62	57	56	62	52	54	71	65	65	43	43	38	68	62	52
MORGAN ELEMENTARY	120	93	11	50 - 73	62	57	56	62	52	54	71	65	65	43	43	38	68	62	52
MURRAY	483	90	20	47 - 63	58	56	58	59	54	59	66	63	67	43	43	43	52	52	52
GRANT ELEMENTARY	58	81	13	49 - 72	58	62	64	54	68	62	65	69	73	50	59	43	52	52	73
HORIZON ELEMENTARY	79	91	33	39 - 63	55	46	57	59	45	59	67	53	66	38	34	50	52	35	52
LIBERTY ELEMENTARY	58	97	28	42 - 66	55	55	55	59	54	59	66	60	67	43	43	38	42	42	42
LONGVIEW ELEMENTARY	85	89	10	51 - 74	67	53	58	71	48	65	73	62	65	59	43	38	62	42	52
MCMILLAN ELEMENTARY	46	96	21	45 - 69	55	68	58	62	71	62	60	71	60	38	59	43	52	73	42
PARKSIDE ELEMENTARY	82	83	34	39 - 63	49	50	50	52	45	45	48	55	59	27	34	38	52	52	42
VIEWMONT ELEMENTARY	75	96	13	49 - 72	60	59	65	54	59	54	69	69	71	63	50	63	62	52	62
NEBO	1854	95	17	48 - 63	60	59	58	68	65	65	69	60	62	50	43	43	68	62	62
ART CITY ELEMENTARY	133	92	10	51 - 74	61	55	59	68	54	62	60	57	65	50	34	43	73	62	62
BARNETT ELEMENTARY	84	95	23	44 - 68	60	58	54	54	59	65	63	59	57	59	50	38	62	62	62
BROCKBANK ELEMENTARY	127	96	19	46 - 70	52	58	52	59	59	68	45	57	53	43	50	34	68	52	52
BROOKSIDE ELEMENTARY	76	95	13	49 - 72	68	72	71	74	80	74	67	75	75	63	68	63	68	79	73
CANYON ELEMENTARY	105	98	6	53 - 75	64	65	61	71	71	71	65	70	65	50	50	43	68	68	68
GOSHEN ELEMENTARY	49	90	25	43 - 67	50	58	56	59	71	74	53	55	45	34	34	34	52	42	62
GRANT ELEMENTARY	40	95	25	43 - 67	69	58	62	74	74	71	65	57	66	63	30	43	79	62	68
LARSEN ELEMENTARY	109	97	16	48 - 71	71	56	57	86	68	68	66	62	57	59	34	34	79	52	62
MAPLETON ELEMENTARY	142	98	8	52 - 74	66	60	66	74	68	77	63	63	65	59	43	59	68	68	68
MT. LOAFER ELEMENTARY	139	98	6	53 - 75	67	59	59	68	65	59	67	63	62	59	50	50	68	52	62
PARK ELEMENTARY	61	100	20	46 - 69	52	64	58	59	68	62	50	65	65	43	50	50	52	68	52
REES ELEMENTARY	45	98	25	43 - 67	50	47	40	62	68	45	57	44	40	23	34	23	52	42	35
SAGE CREEK ELEMENTARY	120	98	11	50 - 73	62	64	61	77	74	68	62	65	60	50	50	43	62	62	52
SALEM ELEMENTARY	77	94	13	49 - 72	56	59	62	62	65	62	65	55	65	43	43	50	62	62	68
SANTAQUIN ELEMENTARY	75	96	18	47 - 70	45	56	43	52	62	52	50	60	41	34	43	34	42	52	35
SPANISH OAKS ELEMENTARY	97	89	9	51 - 74	56	57		65	65	65	65	65		38	43		62	52	
SPRING LAKE EL	129	98				50				52			57			38			42
TAYLOR ELEMENTARY	81	99	24	44 - 67	55	59	59	65	48	59	55	62	70	50	50	50	62	73	52
WESTSIDE ELEMENTARY	75	89	19	46 - 70	55	59	62	62	59	71	51	62	66	43	50	43	62	62	62
WILSON ELEMENTARY	90	91	21	45 - 69	52	45	56	62	37	54	57	46	59	38	30	38	52	52	62
NORTH SANPETE	178	97	47	42 - 57	42	37	44	45	37	52	44	37	50	27	30	30	52	42	42
FAIRVIEW ELEMENTARY	37	95	33	39 - 63	42	39	60	40	40	62	43	39	67	34	30	50	42	35	52
FOUNTAIN GREEN ELEM	19	100	52	30 - 54	55	35	49	59	37	52	55	36	59	30	23	30	73	42	62
MORONI ELEMENTARY	34	94	56	29 - 52	34	31	20	40	32	24	35	32	16	23	27	14	31	26	26
MT. PLEASANT ELEMENTARY	69	100	51	31 - 54	39	41	42	54	45	48	29	40	45	23	30	34	52	52	42
SPRING CITY ELEMENTARY	19	95	51	31 - 54	62	36	64	65	20	74	67	43	66	63	30	50	68	35	68
NORTH SUMMIT	90	99	12	49 - 64	64	61	48	62	65	45	70	60	51	59	38	34	68	68	62
NORTH SUMMIT ELEMENTARY	90	99	5	53 - 76	64	61	48	62	65	45	70	60	51	59	38	34	68	68	62
OGDEN	1088	92	32	45 - 60	34	36	33	35	37	37	40	41	35	23	23	21	31	35	31
BONNEVILLE ELEMENTARY	74	86	45	34 - 57	34	38	25	35	42	27	40	43	32	18	27	14	35	35	26
DEE ELEMENTARY	76	100	56	29 - 52	19	21	16	22	24	18	19	14	19	12	14	8	12	22	18
EDISON ELEMENTARY	67	99	61	26 - 49	35	31	33	40	30	45	37	30	34	30	27	27	26	26	26
GRAMERCY ELEMENTARY	68	82	48	32 - 56	22	26	28	22	24	30	28	24	28	16	18	18	26	26	26
GRANDVIEW ELEMENTARY	68	96	15	48 - 71	66	66	67	65	71	74	70	67	70	59	50	63	68	62	73
HILLCREST ELEMENTARY	77	96	29	41 - 65	70	71	75	77	71	74	71	69	75	63	63	68	73	73	79
LEWIS ELEMENTARY	76	71	59	27 - 50	13	15	15	14	16	19	17	16	13	6	14	12	9	15	18
LINCOLN ELEMENTARY	55	98	49	32 - 55	28	27	31	20	24	32	30	29	32	21	18	18	31	31	31
LYNN ELEMENTARY	64	100	45	34 - 57	34	32	36	27	37	32	39	43	46	21	16	23	26	31	26
MANN, HORACE ELEMENTARY	83	95	47	33 - 56	39	40	33	40	35	35	44	57	32	27	27	23	35	35	31
MOUNTAIN VIEW ELEMENTARY	73	84	44	34 - 58	16	27	26	18	35	27	14	29	24	8	18	14	18	22	22
POLK ELEMENTARY	77	95	34	39 - 63	46	36	36	45	37	37	46	41	37	38	23	30	52	42	35
SMITH, T. O. ELEMENTARY	111	99	45	34 - 57	22	37	20	19	42	20	19	45	21	12	23	9	26	35	22
TAYLOR, C. H. ELEMENTARY	57	86	43	34 - 58	37	40	30	40	32	35	48	51	32	23	23	18	31	35	26
WASATCH ELEMENTARY	58	93	15	48 - 71	59	68	64	59	65	68	67	76	73	50	50	38	52	73	73
PARK CITY	285	92	14	49 - 64	70	70	68	80	77	74	67	70	67	59	59	59	73	73	73
JEREMY RANCH ELEMENTARY	110	90	7	52 - 75	68	71	68	80	77	77	66	70	66	63					

District/School	2002			2002 Expected Battery	Test Scores by Year (Median Percentile Rank)																			
	Students Tested		% Free Lunch		Battery			Math			Reading			Language			Environment							
	Count	%			00	01	02	00	01	02	00	01	02	00	01	02	00	01	02					
3rd Grade																								
TRAILSIDE ELEMENTARY	56	100	17	47 - 71			70	70			77	77			70	66			63	68			73	73
PIUTE	20	80	25	46 - 62	57	51	50	62	52	48	57	53	57	43	34	38	68	73	52					
CIRCLEVILLE ELEMENTARY	15	80	18	47 - 70	54	63	49	62	68	45	43	62	57	43	68	30	68	85	62					
OSCARSON ELEMENTARY	5	80	54	30 - 53	60	26	57	62	20	54	78	32	57	59	16	63	42	42	52					
PROVO	950	100	36	44 - 60	53	53	56	59	59	62	59	60	60	38	38	43	52	52	52					
CANYON CREST ELEMENTARY	79	90	11	50 - 73	63	70	69	62	74	74	71	70	76	43	50	50	68	68	73					
EARHART, AMELIA ELEM	98	98	26	43 - 66	50	57	63	59	59	65	46	63	60	34	34	50	52	62	62					
EDGEMONT ELEMENTARY	63	98	18	47 - 70	61	58	66	62	52	65	63	66	70	43	43	59	68	62	68					
FRANKLIN ELEMENTARY	80	99	62	26 - 49	39	31	43	40	35	48	45	34	45	23	23	34	35	26	42					
GRANDVIEW ELEMENTARY	72	99	35	38 - 62	57	44	55	62	52	65	60	50	57	38	34	43	62	52	62					
JOAQUIN ELEMENTARY	55	84	61	26 - 49	37	33	48	42	37	59	45	41	53	23	18	43	31	31	31					
OAK SPRINGS	4	25																						
PROVOST ELEMENTARY	63	98	39	36 - 60	49	58	56	42	62	54	53	60	65	34	43	34	52	42	52					
ROCK CANYON ELEMENTARY	73	99	20	46 - 69	68	63	66	74	68	71	67	65	69	50	59	59	68	68	62					
SPRING CREEK E	69	100																						35
SUNSET VIEW ELEMENTARY	87	92	39	36 - 60	50	50	55	59	59	52	55	48	62	34	38	38	42	62	42					
TIMPANOGOS ELEMENTARY	87	77	64	25 - 48	39	39	47	40	42	54	41	41	50	27	27	34	42	31	35					
WASATCH ELEMENTARY																								
WESTRIDGE ELEMENTARY	115	99	34	39 - 63	57	57	58	74	68	68	63	60	60	38	34	50	52	52	52					
RICH	35	100	51	41 - 57	52	68	54	52	71	54	60	71	69	50	63	43	52	73	35					
NORTH RICH ELEMENTARY	15	100	55	29 - 52	46	71	69	65	68	71	60	73	80	23	68	78	26	68	42					
SOUTH RICH ELEMENTARY	20	100	69	23 - 45	54	62	45	45	71	42	60	63	43	63	59	34	52	73	35					
SALT LAKE CITY	2050	90	55	40 - 56	52	43	41	59	45	48	57	45	44	38	30	27	52	42	35					
BACKMAN ELEMENTARY	67	78	83	18 - 38	28	21	32	25	19	32	29	22	39	21	14	18	26	22	31					
BEACON HEIGHTS ELEM	67	97	20	46 - 69	71	61	70	74	65	83	69	62	73	59	50	50	85	62	68					
BENNIION ELEMENTARY	62	84	85	18 - 37	48	24	20	68	25	22	60	26	18	34	14	14	35	22	22					
BONNEVILLE ELEMENTARY	84	98	5	53 - 76	72	76	64	77	80	77	76	76	63	63	63	43	68	73	68					
DILWORTH ELEMENTARY	53	98	30	41 - 65	60	69	62	65	71	68	67	73	65	50	59	43	73	68	52					
EDISON ELEMENTARY	84	89	90	16 - 35	29	22	23	25	24	20	39	25	23	21	12	16	22	18	26					
EMERSON ELEMENTARY	59	80	49	32 - 55	49	53	49	45	59	54	57	46	50	34	34	30	42	73	52					
ENSIGN ELEMENTARY	50	98	7	52 - 75	72	71	64	71	68	68	77	78	66	63	59	43	79	73	68					
ESCALANTE ELEM	75	91																						35
FRANKLIN ELEMENTARY	88	88	96	14 - 32	25	18	16	35	22	27	20	18	13	14	9	9	31	22	15					
GUADALUPE	19	100	80	19 - 40	32	26	41	30	22	42	32	32	41	21	18	34	35	18	31					
HAWTHORNE ELEMENTARY	38	97	58	28 - 51	44	54	50	48	59	62	40	62	55	34	34	38	62	52	42					
HIGHLAND PARK ELEMENTARY	81	86	25	43 - 67	58	57	51	54	54	54	62	59	51	43	43	38	68	52	52					
INDIAN HILLS ELEMENTARY	57	96	8	52 - 74	59	69	70	62	71	71	60	70	71	50	63	63	62	73	73					
JACKSON ELEMENTARY	72	76	93	15 - 34	29	19	20	37	20	20	34	20	20	23	14	14	35	18	18					
LINCOLN ELEMENTARY	77	92	90	16 - 35	27	23	17	37	19	19	39	17	15	12	18	9	12	26	18					
LOWELL ELEMENTARY	50	96	41	35 - 59	66	69	64	83	77	80	57	69	65	50	43	43	73	79	73					
LOWELL ELP	27	93	7	52 - 75	86	88	87	86	89	89	94	92	84	78	78	78	85	85	90					
MEADOWLARK ELEMENTARY	77	75	87	17 - 36	40	24	36	42	27	48	55	24	41	21	14	23	31	22	31					
MOUNTAIN VIEW ELEMENTARY	80	95	91	16 - 35	39	19	17	40	19	16	53	19	22	30	14	9	26	22	15					
NEWMAN ELEMENTARY	65	89	64	25 - 48	32	27	30	27	25	25	39	30	37	21	16	18	31	22	22					
NIBLEY PARK ELEMENTARY	67	93	64	25 - 48	41	47	40	45	48	40	45	59	46	27	30	30	35	42	35					
NORTH STAR ELEMENTARY	85	95	71	22 - 44	47	29	32	54	35	48	57	26	32	34	18	21	35	31	26					
PARKVIEW ELEMENTARY	66	89	91	16 - 35	26	31	21	30	42	40	32	35	22	18	21	12	22	22	22					
RILEY ELEMENTARY	76	86	87	17 - 36	25	18	29	25	24	37	35	20	30	18	12	23	22	15	31					
ROSE PARK ELEMENTARY	74	61	76	21 - 42	37	27	27	40	32	30	45	32	24	23	21	18	31	26	22					
ROSSLYN HEIGHTS ELEM	43	100	8	52 - 74	73	73	61	74	77	54	73	75	70	68	74	43	79	68	73					
UINTAH ELEMENTARY	80	100	9	51 - 74	66	68	70	62	68	74	67	67	75	50	63	63	73	73	68					
WASATCH ELEMENTARY	64	97	25	43 - 67	67	70	63	68	68	62	69	69	69	59	63	43	68	68	68					
WASHINGTON ELEMENTARY	50	96	78	20 - 41	44	38	27	62	37	30	51	46	21	34	23	18	31	35	22					
WASHINGTON OPEN	27	100	17	47 - 71	54	74	50	62	74	52	50	65	39	38	59	50	52	85	68					
WHITTIER ELEMENTARY	63	86	77	20 - 41	39	28	27	45	37	37	45	18	21	27	18	18	26	26	35					
WHITTIER ELP	24	100	19	46 - 70																				79
SAN JUAN	205	96	65	39 - 54	29	32	29	30	37	37	35	32	26	18	21	16	26	26	31					
BLANDING ELEMENTARY	82	98	61	26 - 49	36	39	37	45	59	52	44	36	32	21	23	21	31	31	35					
BLUFF ELEMENTARY	11	91	94	15 - 33	16	16	21	24	20	24	12	13	19	12	14	16	15	22	15					
HALLS CROSSING ELEM	1	100	0	56 - 78																				62
LA SAL ELEMENTARY	1	100	56	29 - 52	50	37		37	37	12	50	45		59	23	16	52	22	18					
MEXICAN HAT ELEMENTARY	29	97	94	15 - 33	16	11	10	18	13	13	16	10	9	9	8	6	15	9	9					
MONTEZUMA ELEMENTARY	34	97	84	18 - 38	19	26	15	18	27	13	21	29	20	9	21	6	18	22	15					
MONTICELLO ELEMENTARY	47	94	47	33 - 56	57	50	56	54	52	62	59	45	57	38	43	34	62	52	73					
SEVIER	316	97	43	43 - 58	55	52	59	52	48	65	60	59	63	38	38	43	62	52	62					
ASHMAN ELEMENTARY	132	98	40	36 - 60	57	47	56	52	42	54	65	55	60	43	34	38	62	52	62					
KOOSHAREM ELEMENTARY	12	92	77	20 - 41	37	58	68	40	30	62	51	69	75	16	59	59	62	73	79					
MONROE ELEMENTARY	93	96	53	30 - 53	54	58	54	54	62	62	57	65	59	38	43	43	68	62	42					
SALINA ELEMENTARY	79	96	50	31 - 55	54	49	66	52	54	80	62	60	70	43	38									

District/School	2002			2002 Expected Battery	Test Scores by Year (Median Percentile Rank)														
	Students Tested		% Free Lunch		Battery			Math			Reading			Language			Environment		
	Count	%			00	01	02	00	01	02	00	01	02	00	01	02	00	01	02
3rd Grade																			
MANTI ELEMENTARY	73	97	37	37 - 61	70	46	54	77	62	65	70	43	59	59	30	34	73	62	52
SOUTH SUMMIT	88	99	12	49 - 64	59	53	54	62	62	62	63	59	60	38	38	38	68	42	52
SOUTH SUMMIT ELEMENTARY	88	99	10	51 - 74	59	53	54	62	62	62	63	59	60	38	38	38	68	42	52
TINTIC	16	94	62	39 - 54	51	53	68	59	54	80	57	55	69	27	50	59	52	42	73
CALLAO ELEMENTARY	2	100					65			80			46			59			62
EUREKA ELEMENTARY	11	100	86	17 - 37	50	52	70	59	48	80	57	55	71	27	59	63	52	42	73
WEST DESERT ELEMENTARY	3	67	38	37 - 61	38	44	20	62	59	20	30	44	10	23	30	18	31	26	26
TOOELE	825	98	33	45 - 60	48	50	54	52	54	54	57	57	60	30	38	38	42	52	52
DUGWAY ELEMENTARY	16	94	29	41 - 65	44	39	74	48	37	83	46	44	80	30	21	68	42	42	68
EAST ELEMENTARY	94	99	37	37 - 61	59	57	58	62	59	59	65	66	62	38	43	50	62	52	62
GRANTSVILLE ELEMENTARY	153	99	36	38 - 62	44	45	52	45	48	54	51	55	62	27	30	34	42	35	42
HARRIS ELEMENTARY	57	93	37	37 - 61	46	55	59	40	54	59	60	62	67	30	43	38	42	52	62
IBAPAH ELEMENTARY	4	100	82	19 - 39	7	3	16	12	2	27	7	3	22	6	2	6	26	3	15
MIDDLE CANYON	106	100		-			48			48			55			34			35
NORTHLAKE ELEMENTARY	87	92	35	38 - 62	44	47	45	45	59	42	53	53	57	30	38	34	42	42	35
OVERLAKE ELEM	75	100		-			55			54			65			38			52
SMITH, ANNA ELEMENTARY	32	100	87	17 - 36	17	13	20	27	20	32	19	13	23	14	9	9	15	12	18
STANSBURY ELEMENTARY	113	96	20	46 - 69	53	57	60	54	59	65	62	57	62	34	43	43	52	68	68
VERNON ELEMENTARY	4	100	40	36 - 60	50	64	54	22	59	59	36	77	67	43	68	63	68	52	26
WEST ELEMENTARY	86	100	34	39 - 63	52	48	54	54	48	65	60	57	60	38	34	38	42	42	42
UINTAH	423	99	41	43 - 59	53	48	48	54	48	52	57	51	57	34	30	30	52	52	42
ASHLEY ELEMENTARY	179	98	48	32 - 56	60	55	55	59	54	59	65	60	62	43	38	34	62	62	52
LAPOINT ELEMENTARY	32	100	71	22 - 44	46	28	31	59	27	24	50	34	36	27	16	21	42	26	31
NAPLES ELEMENTARY	170	100	52	30 - 54	50	51	53	59	54	52	57	51	62	30	30	34	52	62	52
TODD ELEMENTARY	44	89	85	18 - 37	15	21	22	14	25	22	13	18	24	8	16	21	22	26	22
WASATCH	300	95	18	48 - 63	51	48	50	52	52	52	62	59	55	34	34	34	42	42	42
HEBER VALLEY ELEMENTARY	107	93	26	43 - 66	46	53	46	42	59	54	57	60	51	34	43	34	42	42	42
MIDWAY ELEMENTARY	95	93	21	45 - 69	55	43	43	48	45	45	67	48	50	27	27	27	52	42	42
SMITH, J. R. ELEMENTARY	98	99	16	48 - 71	56	50	56	65	48	54	63	65	65	38	38	34	52	42	52
WASHINGTON	1405	95	22	47 - 62	53	52	56	54	54	62	57	59	62	38	38	38	52	42	52
BLOOMINGTON ELEMENTARY	75	96	11	50 - 73	56	55	67	59	65	71	62	62	71	43	43	59	52	42	62
BLOOMINGTON HILLS ELEM	110	93	14	49 - 72	63	68	61	65	71	74	66	70	67	50	59	43	68	73	52
CORAL CLIFFS E	60	100	0	56 - 78			64			68			67			50			62
DIAMOND VALLEY ELEM	58	100	24	44 - 67	54	57	55	54	54	62	63	62	51	43	50	38	42	42	62
DIXIE DOWNS ELEMENTARY	79	87	31	40 - 64	43	35	43	52	37	54	46	39	43	34	27	34	35	31	35
ENTERPRISE ELEMENTARY	37	92	39	36 - 60	43	53	56	48	65	65	48	66	59	27	30	38	31	42	62
HURRICANE ELEMENTARY	64	98	41	35 - 59	54	51	54	52	54	59	65	63	60	43	43	38	42	42	52
LAVERKIN ELEMENTARY	90	93	42	35 - 59	48	43	44	48	52	42	51	45	46	34	34	30	52	42	42
PANORAMA ELEMENTARY	99	99	23	44 - 68	50	52	52	54	59	59	53	62	62	34	38	34	52	42	52
RED MOUNTAIN ELEMENTARY	97	98	37	37 - 61	44	51	49	48	52	59	55	59	46	34	38	38	35	52	52
SANDSTONE ELEMENTARY	95	98	29	41 - 65	47	48	60	48	62	68	55	57	65	30	34	50	42	35	62
SANTA CLARA ELEMENTARY	93	98	13	49 - 72	62	56	66	65	59	68	67	65	69	50	43	50	62	42	68
SPRINGDALE ELEMENTARY	14	100	0	56 - 78	32	65	71	40	54	65	28	71	70	30	63	68	31	90	68
ST. GEORGE EAST ELEM	116	96	38	37 - 61	47	37	50	52	40	52	62	48	63	30	27	34	42	31	42
ST. GEORGE WEST ELEM	62	84	34	39 - 63	41	45	56	48	54	65	43	44	57	30	30	34	42	35	52
SUNSET ELEMENTARY	94	89	27	42 - 66	58	62	62	59	65	65	69	69	69	38	43	43	52	62	68
THREE FALLS ELEMENTARY	82	95	34	39 - 63	56	55	55	62	54	65	57	62	55	50	38	38	62	52	68
WASHINGTON ELEMENTARY	82	96	35	38 - 62	52	43	51	65	54	54	55	51	57	38	27	34	42	35	62
WAYNE	51	94	48	42 - 57	53	46	51	62	37	48	45	57	59	38	30	30	73	52	52
HANKSVILLE ELEMENTARY	5	60	65	25 - 47	61	73	74	52	54	77	71	83	89	38	74	63	79	85	35
LOA ELEMENTARY	46	98	39	36 - 60	50	43	51	52	30	48	44	57	59	38	30	27	73	42	62
WEBER	2016	95	21	47 - 63	56	54	57	59	54	59	62	60	62	38	38	38	62	52	62
BATES ELEMENTARY	57	100	12	50 - 73	48	54	63	45	54	77	57	62	66	34	34	38	52	52	73
CANYONVIEW ELE	4	100	41	35 - 59			22			30			28			3			22
CHILD, H. GUY ELEMENTARY	56	98	13	49 - 72	63	63	66	68	74	65	71	70	67	43	43	63	73	62	73
CLUB HEIGHTS ELEMENTARY	38	82	67	24 - 46	48	34	40	62	35	42	46	35	50	30	27	21	52	35	31
COUNTRY VIEW ELEMENTARY	86	95	19	46 - 70	48	52	55	52	52	54	60	60	59	34	38	34	42	52	62
FARR WEST ELEMENTARY	56	91	26	43 - 66	53	54	55	45	52	62	62	62	65	43	43	43	62	62	52
FREEDOM ELEM	101	78					52			59			53			43			52
GREEN ACRES ELEMENTARY	69	96	19	46 - 70	57	56	61	54	54	65	67	63	66	38	38	50	62	52	68
HOOPER ELEMENTARY	74	100	20	46 - 69	57	59	52	52	62	48	67	65	66	50	50	34	62	62	42
KANESVILLE ELEMENTARY	97	98	16	48 - 71	55	45	59	59	45	59	57	44	60	50	34	50	62	52	62
LAKEVIEW ELEMENTARY	52	100	42	35 - 59	39	52	43	42	71	48	35	53	48	23	23	27	52	52	52
LOMOND VIEW ELEMENTARY	69	96	7	52 - 75	66	69	73	74	74	77	70	73	73	50	63	59	68	68	73
MAJESTIC ELEMENTARY	114	91	16	48 - 71	66	67	68	68	71	74	70	69	71	59	59	63	68	68	68
MAR LON HILLS ELEMENTARY	56	96	26	43 - 66	54	58	56	68	54	59	59	62	60	43	43	34	52	62	62
MIDLAND ELEMENTARY	111	97	22	45 - 68	64	52	60	65	52	65	71	57	67	59	43	50	62	52	62
MUNICIPAL ELEMENTARY	51	100	24	44 - 67	48	50	53	59	54	54	66	66	57	30	34	43	31	35	52
NORTH OGDEN ELEMENTARY	66	97	21	45 - 69	64	50	54	77	54	54	67	50	59	43	34	38	68	52	62
NORTH PARK ELEMENTARY	57	98	36	38 - 62	49	48	42	48	45	37	55	53	44	38	30	34	62	62	35
PIONEER ELEMENTARY	75	92	29	41 - 65	48	43	41	52	45	42	48	50	50	34	34	30	42	35	31
PLAIN CITY ELEMENTARY	76	93	17	47 - 71	58	55	65	54	52	65	59	66	75	50	38	50	62	52	68

District/School	2002			2002 Expected Battery	Test Scores by Year (Median Percentile Rank)															
	Students Tested		% Free Lunch		Battery			Math			Reading			Language			Environment			
	Count	%			00	01	02	00	01	02	00	01	02	00	01	02	00	01	02	
3rd Grade																				
RIVERDALE ELEMENTARY	60	88	29	41 - 65	57	53	55	62	54	59	62	60	57	38	34	43	52	52	52	
ROOSEVELT ELEMENTARY	79	100	29	41 - 65	42	36	44	37	37	40	51	44	55	27	23	27	42	35	35	
ROY ELEMENTARY	121	100	32	40 - 64	53	50	56	62	52	59	57	48	57	38	30	38	52	62	62	
UINTAH ELEMENTARY	82	94	15	48 - 71	63	59	68	68	59	68	62	59	66	50	50	63	73	68	73	
VALLEY ELEMENTARY	91	99	14	49 - 72	64	57	61	62	54	59	69	60	66	50	50	50	73	68	62	
VALLEY VIEW ELEMENTARY	83	100	28	42 - 66	45	47	46	45	48	52	53	57	50	30	27	27	35	42	35	
WASHINGTON TERRACE ELEM	75	99	39	36 - 60	61	54	57	62	52	65	66	57	65	38	43	34	62	62	62	
WEST WEBER ELEMENTARY	64	91	23	44 - 68	42	53	52	45	62	54	48	59	53	30	43	30	42	52	68	
Charter																				
JOHN HANCOCK							67			71			57				59		79	
PINNACLE CANYON	32	100				50	52	47	52	59	48	44	53	57	34	43	34	52	62	42
SOLDIER HOLLOW	6	67	0	51 - 66		78	57		71	62		70	69		59	16		90	73	
THOMAS EDISON							66			62			75				68		52	
TIMPANOGOS ACD							64			71			67				50		68	

District/School	2002			2002 Expected Battery	Test Scores by Year (Median Percentile Rank)																	
	Students Tested	% Free			Battery			Math			Reading			Language			Science			Soc. Sci.		
	Count	%	Lunch		00	01	02	00	01	02	00	01	02	00	01	02	00	01	02	00	01	02
5th Grade																						
MIDLAND ELEMENTARY	113	99	22	41 - 66	56	50	56	59	46	56	52	44	49	53	50	50	65	60	71	51	51	56
MUNICIPAL ELEMENTARY	52	98	24	40 - 65	56	50	44	59	49	49	52	49	42	60	56	50	65	60	55	51	56	51
NORTH OGDEN ELEMENTARY	70	100	21	42 - 66	52	62	63	49	67	64	49	61	61	47	56	56	71	77	77	56	65	69
NORTH PARK ELEMENTARY	70	86	36	35 - 59	49	42	37	42	37	37	42	42	32	44	38	35	65	55	46	56	44	35
PIONEER ELEMENTARY	94	95	29	38 - 63	47	44	44	44	44	46	49	44	39	47	35	44	60	60	60	51	44	39
PLAIN CITY ELEMENTARY	82	93	17	44 - 68	64	47	58	67	49	52	67	44	64	56	44	47	71	60	65	69	51	56
RIVERDALE ELEMENTARY	82	89	29	38 - 63	42	43	51	44	44	52	37	44	52	38	41	50	46	55	55	35	39	44
ROOSEVELT ELEMENTARY	75	99	29	38 - 63	46	46	50	44	44	46	44	42	47	41	38	47	65	60	65	44	61	51
ROY ELEMENTARY	107	100	32	37 - 61	39	49	49	42	46	56	36	47	49	38	47	41	55	65	55	39	51	44
UINTAH ELEMENTARY	111	97	15	45 - 69	56	50	54	52	49	56	58	47	49	53	44	47	65	55	65	61	51	56
VALLEY ELEMENTARY	125	99	14	45 - 69	57	53	53	56	46	46	58	58	61	47	53	41	71	65	71	61	44	51
VALLEY VIEW ELEMENTARY	78	97	28	39 - 63	51	41	41	46	35	39	44	44	36	53	44	41	71	55	55	56	39	39
WASHINGTON TERRACE ELEM	60	100	39	34 - 58	38	41	44	42	37	42	26	39	42	30	28	35	55	55	55	35	39	35
WEST WEBER ELEMENTARY	61	100	23	41 - 65	55	47	39	49	44	39	58	42	36	53	41	30	65	65	60	61	44	39
Charter				-																		
JOHN HANCOCK				-			74			79			79			72			77			74
PINNACLE CANYON CHARTER	23	100		-	69	72	65	67	71	64	67	73	67	60	67	67	77	82	71	61	74	65
SOLDIER HOLLOW	5	40	0	54 - 69	40	73	71	30	46	49	49	86	76	41	72	75	65	55	46	35	69	85
THOMAS EDISON				-			62			64			55			56			77			69
TIMPANOGOS ACD				-			65			67			67			67			71			61

District/School	2002			2002 Expected Battery	Test Scores by Year (Median Percentile Rank)																			
	Students Tested		% Free Lunch		Battery			Math			Reading			Language			Science			Soc. Sci.				
	Count	%			00	01	02	00	01	02	00	01	02	00	01	02	00	01	02	00	01	02		
8th Grade																								
ALPINE	3689	97	13	36	-	74	58	59	59	66	64	62	53	56	56	50	54	54	62	62	62	58	58	62
AMERICAN FORK JR HIGH	458	97	14	39	-	75	59	61	55	76	71	62	48	56	53	47	54	50	58	67	62	58	58	58
CANYON VIEW JR HIGH	399	96	17	37	-	74	57	63	59	71	74	56	56	59	59	47	54	54	58	67	62	52	66	62
LAKERIDGE JR HIGH	414	96	18	37	-	73	61	50	61	64	54	64	61	51	61	54	47	54	67	58	67	62	45	66
LEHI JR HIGH	517	98	13	39	-	76	50	53	52	54	54	52	43	48	48	50	50	50	58	54	54	52	62	58
MOUNTAIN RIDGE JR HIGH	638	97	6	43	-	79	64	63	66	73	71	74	61	61	64	62	58	62	67	67	67	62	62	66
OAK CANYON JR HIGH	489	99	8	42	-	78	63	62	61	73	71	64	61	64	61	58	54	58	67	62	62	58	62	62
OREM JR HIGH	345	97	23	34	-	71	52	49	54	54	54	64	51	51	53	47	47	47	62	54	58	58	45	58
PLEASANT GROVE JR HIGH	429	97	15	38	-	75	52	55	51	64	62	52	48	51	53	40	43	47	58	62	62	45	58	52
SUMMIT JR									4			9			4			2			4			9
BEAVER	114	93	40	30	-	69	55	53	44	58	54	45	56	51	48	43	47	47	62	58	42	58	52	40
BEAVER HIGH	68	96	27	32	-	69	58	54	37	62	58	39	51	48	43	43	54	40	72	58	34	62	52	36
MILFORD HIGH	29	90	27	32	-	69	42	45	45	35	50	43	41	51	53	37	37	34	54	42	47	45	52	45
MINERSVILLE SE	17	88	50	21	-	56	70	59	57	69	69	73	74	59	48	66	43	54	72	67	58	66	58	52
BOX ELDER	838	97	32	32	-	71	55	53	54	64	62	60	56	51	51	50	47	47	58	58	58	52	52	52
BEAR RIVER MIDDLE	335	98	37	27	-	64	53	48	51	56	50	54	51	43	48	50	47	50	58	58	58	52	45	52
BOX ELDER MIDDLE	491	97	28	31	-	69	60	59	56	73	74	62	56	51	51	54	47	47	54	58	62	52	58	52
GROUSE CREEK	6	100	23	34	-	71		33	65		50	69		33	61		34	75		34	76		24	40
PARK VALLEY S	6	100	55	19	-	54	55	43	59	50	60	62	61	34	61	62	31	43	62	42	54	52	40	66
CACHE	1036	100	27	33	-	72	61	60	58	71	66	60	59	59	59	54	54	50	67	67	67	62	58	58
NORTH CACHE CENTER	547	100	25	33	-	70	60	62	55	64	71	58	56	61	53	58	58	54	62	67	58	58	62	52
SOUTH CACHE CENTER	493	99	24	33	-	71	64	59	61	74	66	64	59	56	61	54	47	50	72	67	72	62	58	62
CARBON	279	97	47	29	-	67	47	46	41	50	50	41	46	48	41	40	40	37	54	47	47	45	45	40
EAST CARBON HIGH	24	92	67	15	-	47	19	23	25	12	21	20	26	27	23	10	19	23	16	22	30	24	20	32
HELPER JR HIGH	72	99	40	25	-	62	45	46	41	47	41	39	39	48	43	43	47	43	58	47	42	45	45	40
LIGHTHOUSE ALTERNATIVE	2	50	78	11	-	40			47			41		6	59			58		22	54			62
MONT HARMON JR HIGH	181	97	51	21	-	56	49	49	45	58	56	45	48	51	41	40	40	37	54	47	54	52	52	40
DAGGETT	13	100	33	32	-	70	48	41	74	62	50	81	51	46	77	31	31	71	47	38	72	40	28	70
MANILA HIGH	13	100	28	31	-	69	48	41	74	62	50	81	51	46	77	31	31	71	47	38	72	40	28	70
DAVIS	4548	97	21	35	-	73	59	58	58	64	62	62	59	56	59	54	54	54	62	62	62	58	58	58
BOUNTFUL JR HIGH	277	99	21	35	-	72	57	54	60	60	58	62	53	61	59	54	58	58	62	58	67	58	52	62
CENTERVILLE JR HIGH	375	97	11	40	-	76	61	60	65	69	69	71	59	61	64	58	58	62	67	67	67	62	62	66
CENTRAL DAVIS JR HIGH	424	97	17	37	-	74	52	52	50	56	52	54	51	46	46	54	54	50	54	62	58	52	58	52
DAVIS JR HIGH	7	100	59	17	-	51	9	7	19	13	6	31	3	9	6	2	3	19	7	10	26	12	2	24
FAIRFIELD JR HIGH	291	99	20	35	-	72	63	60	60	66	60	64	61	61	59	58	58	58	72	67	67	58	58	62
FARMINGTON JR HIGH	355	99	10	41	-	77	69	65	68	73	74	74	71	67	71	66	58	66	72	67	72	66	66	66
KAYSVILLE JR HIGH	388	99	11	40	-	76	66	69	65	74	74	69	71	71	67	62	71	66	67	72	67	62	62	66
MILLCREEK JR HIGH	251	99	19	36	-	73	61	67	61	64	71	60	61	71	61	58	62	62	62	72	67	62	62	62
MUELLER PARK JR HIGH	235	97	13	39	-	76	66	67	68	76	71	74	64	64	67	66	62	66	72	72	72	66	70	70
NORTH DAVIS JR HIGH	394	92	45	23	-	59	46	42	45	54	41	50	41	41	41	40	40	40	54	54	47	40	40	40
NORTH LAYTON JR HIGH	401	97	24	33	-	71	58	55	51	71	71	54	56	46	51	47	47	43	62	58	58	58	58	52
SOUTH DAVIS JR HIGH	292	97	16	38	-	74	61	63	61	66	64	69	59	64	64	54	58	54	62	67	62	58	66	62
SUNSET JR HIGH	332	92	26	32	-	70	49	49	50	54	54	54	51	51	51	43	47	43	54	54	54	52	45	52
SYRACUSE JR HIGH	521	97	19	36	-	73	52	51	52	60	56	56	51	51	53	50	47	43	58	58	54	45	52	52
DUCHESNE	326	93	40	30	-	69	43	50	52	45	58	58	41	46	46	34	43	47	47	47	58	40	52	52
ALTAMONT HIGH	48	96	21	35	-	72	44	52	54	43	62	56	46	51	46	25	40	50	47	47	62	28	45	45
DUCHESNE HIGH	54	89	35	28	-	65	49	58	60	54	71	74	46	61	53	37	58	54	54	54	62	52	52	62
ROOSEVELT JR HIGH	205	95	43	24	-	60	44	48	49	47	54	54	39	43	46	37	43	40	54	47	54	45	52	52
TABIONA HIGH	13	100	58	18	-	52	39	58	47	37	74	58	46	48	43	28	50	47	42	67	58	28	58	32
THOMPSON	2	50	63	16	-	49	5	15	9	5	16	7	5	14	5	3	4	3	1	22	2	7	32	24
EMERY	211	97	42	30	-	69	51	52	49	56	58	52	51	51	48	43	47	43	58	54	58	45	45	40
CANYON VIEW JR HIGH	77	99	51	21	-	56	58	57	47	71	60	52	56	51	43	43	47	37	58	58	58	58	52	40
GREEN RIVER HIGH	28	100	38	26	-	63	43	55	57	50	76	76	46	56	51	28	40	47	42	42	58	40	45	45
SAN RAFAEL JR HIGH	106	95	42	24	-	61	48	50	48	52	54	47	48	51	51	43	47	50	62	54	54	40	52	40
GARFIELD	81	100	47	29	-	67	44	51	50	43	60	58	41	48	41	37	37	43	47	58	47	45	45	45
BRYCE VALLEY HIGH	23	100	43	24	-	60	39	49	43	41	43	47	39	48	46	34	47	25	47	67	54	52	45	52
ESCALANTE HIGH	24	88	42	24	-	61	37	41	57	33	47	69	34	48	61	43	37	54	58	47	42	36	36	58
PANGUITCH MIDDLE	37	100	42	24	-	61	48	53	45	60	78	45	51	48	36	37	34	40	47	47	47	52	52	32
GRAND	111	97	44	30	-	68	50	50	47	47	52	43	48	56	53	47	47	47	58	62	47	52	45	45
GRAND MIDDLE	111	97	46	23	-	59	50	50	47	47	52	43	48	56	53	47	47	47	58	62	47	52	45	45
GRANITE	5219	90	29	33	-	71	47	45	43	50														

District/School	2002			2002 Expected Battery	Test Scores by Year (Median Percentile Rank)																	
	Students Tested		% Free Lunch		Battery			Math			Reading			Language			Science			Soc. Sci.		
	Count	%			00	01	02	00	01	02	00	01	02	00	01	02	00	01	02	00	01	02
8th Grade																						
KEARNS JR HIGH	342	76	43	24 - 60	36	32	34	35	29	31	39	29	31	34	23	28	42	38	38	36	36	36
KENNEDY JR HIGH	412	83	29	31 - 68	37	38	37	39	41	35	36	34	34	31	37	31	47	42	42	40	36	45
OLYMPUS JR HIGH	271	99	8	42 - 78	67	68	69	73	74	79	67	64	67	62	66	66	62	67	67	70	66	70
SCOTT MATHESON	351	94					30			29			26			23			34			36
VALLEY JR HIGH	271	90	26	32 - 70	49	45	47	56	47	45	43	46	46	40	40	43	54	47	54	40	45	58
WASATCH JR HIGH	311	96	4	44 - 80	74	79	72	83	89	83	71	77	67	66	75	66	76	80	76	74	74	70
WEST LAKE JR HIGH	361	70	42	24 - 61	31	29	37	31	31	39	29	29	34	25	25	34	34	30	42	32	28	36
IRON	561	97	37	31 - 70	52	55	56	54	62	66	51	51	53	47	47	47	58	58	58	52	52	52
CEDAR CITY MIDDLE	509	98	35	28 - 65	51	55	56	54	62	66	51	51	53	47	47	47	58	58	58	45	52	52
PAROWAN HIGH	47	96	15	38 - 75	56	59	56	54	64	58	46	53	48	50	54	50	58	62	58	58	62	52
JORDAN	5651	97	16	36 - 74	59	57	54	62	62	60	56	56	53	54	54	50	62	58	58	58	58	58
ALBION MIDDLE	357	97	8	42 - 78	68	63	63	76	71	69	67	61	61	66	62	58	67	62	62	66	62	66
BUTLER MIDDLE	373	100	10	41 - 77	64	66	67	71	73	73	61	64	67	62	58	58	62	67	67	66	66	66
CRESCENT VIEW MIDDLE	466	93	9	41 - 78	59	62	55	64	71	62	61	64	56	54	54	54	62	62	62	58	58	52
EASTMONT MIDDLE	360	97	19	36 - 73	61	60	49	71	66	50	59	59	51	58	54	47	58	62	54	62	62	52
ELK RIDGE MIDDLE	396	99	18	37 - 73	56	53	54	58	54	60	53	53	53	50	47	54	58	58	58	58	58	52
INDIAN HILLS MIDDLE	387	99	8	42 - 78	65	68	65	74	76	76	64	67	61	62	66	66	67	67	62	66	62	62
JENSEN, J. P. MIDDLE	408	95	24	33 - 71	51	45	50	52	45	50	48	46	48	47	43	47	58	47	54	58	52	52
MIDVALE MIDDLE	232	89	48	22 - 57	35	40	50	35	41	50	36	34	46	31	43	50	38	47	54	36	40	52
MOUNT JORDAN MIDDLE	247	91	32	29 - 66	49	48	49	52	47	54	48	48	48	43	43	43	58	47	54	52	45	45
OQUIRRH HILLS MIDDLE	384	97	17	37 - 74	56	55	53	66	60	64	53	53	51	54	50	50	58	62	58	58	58	52
SOUTH HILLS MIDDLE	385	100	14	39 - 75	50	53	45	50	54	45	48	56	48	47	50	43	58	58	47	52	58	45
SOUTH JORDAN MIDDLE	484	99	8	42 - 78	67	65	62	76	76	76	64	61	59	62	62	62	67	62	62	66	66	66
UNION MIDDLE	368	98	23	34 - 71	59	55	53	64	58	60	59	56	56	54	50	50	58	54	54	62	58	52
WEST HILLS MIDDLE	442	98	22	34 - 71	55	50	48	56	52	52	56	51	46	54	50	43	58	54	54	58	52	45
WEST JORDAN MIDDLE	358	94	29	31 - 68	46	51	41	50	56	41	43	51	41	40	47	40	54	54	42	45	52	40
JUAB	142	92	34	32 - 70	50	54	55	58	66	56	46	51	46	40	47	47	54	58	58	52	45	58
JUAB MIDDLE	142	92	38	26 - 63	50	54	55	58	66	56	46	51	46	40	47	47	54	58	58	52	45	58
KANE	104	97	46	29 - 68	57	56	51	66	58	56	53	59	46	50	43	40	58	62	54	58	52	52
BIGWATER HIGH	3	100	69	14 - 45	65	35	60	93	43	33	53	59	71	54	10	62	67	38	76	45	20	62
KANAB MIDDLE	71	97	44	24 - 60	62	60	49	76	69	60	59	61	43	58	47	40	62	62	47	62	58	45
LAKE POWELL HIGH	1	100	54	19 - 54	8	10	3	7	21	7	7	2	2	9	6	3	10	1	6	9	32	1
VALLEY HIGH	29	97	36	27 - 64	47	50	56	41	45	54	46	53	56	37	34	40	58	62	54	52	36	52
LOGAN	434	96	36	31 - 70	61	57	54	62	58	50	64	59	56	54	54	47	67	67	62	62	58	52
MOUNT LOGAN MIDDLE	433	96	37	27 - 64	61	57	54	62	58	50	64	59	56	54	54	47	67	67	62	62	58	52
MILLARD	265	96	38	31 - 69	56	53	55	62	62	62	53	53	56	50	43	50	58	58	58	52	52	52
DELTA MIDDLE	181	94	34	28 - 65	58	54	63	73	62	73	56	56	59	54	47	58	58	62	62	58	52	62
FILLMORE MIDDLE	78	100	49	21 - 57	49	50	41	54	56	37	51	48	46	43	40	37	58	58	54	52	52	40
GARRISON 7-8TH	6	100					39			41			39			40			47			40
MORGAN	155	100	16	36 - 74	63	64	61	74	76	73	56	61	59	62	54	54	58	62	58	62	66	62
MORGAN MIDDLE	155	100	20	35 - 72	63	64	61	74	76	73	56	61	59	62	54	54	58	62	58	62	66	62
MURRAY	517	99	20	35 - 73	55	56	57	58	62	66	53	53	53	47	50	50	58	58	58	58	58	58
HILLCREST JR HIGH	258	99	27	32 - 69	51	51	56	54	54	64	53	51	53	43	47	50	58	47	58	52	52	52
RIVERVIEW JR HIGH	250	100	14	39 - 75	59	61	58	62	71	71	56	56	56	54	50	54	62	67	58	62	66	58
SUMMIT	9	89	50	21 - 56	20	24	22	21	14	7	22	39	31	12	6	12	26	54	42	12	28	7
NEBO	1608	98	17	35 - 74	58	55	56	64	60	58	56	56	56	50	47	50	62	58	62	58	58	58
PAYSON JR HIGH	502	98	26	32 - 70	54	46	49	60	45	52	51	46	46	50	40	40	58	54	54	52	45	52
SPANISH FORK JR HIGH	607	98	18	37 - 73	56	59	53	66	66	54	56	59	56	47	47	50	58	62	58	52	58	52
SPRINGVILLE JR HIGH	495	99	16	38 - 74	60	60	62	66	64	66	59	61	61	54	54	54	67	67	67	62	62	66
NORTH SANPETE	181	91	47	29 - 67	49	47	50	56	56	56	46	43	43	40	40	40	54	54	58	45	36	40
NORTH SANPETE MIDDLE	181	91	47	22 - 58	49	47	50	56	56	56	46	43	43	40	40	40	54	54	58	45	36	40
NORTH SUMMIT	81	93	12	37 - 75	64	65	71	76	81	83	53	64	71	54	58	58	67	62	72	58	66	70
NORTH SUMMIT MIDDLE	81	93	19	36 - 73	64	65	71	76	81	83	53	64	71	54	58	58	67	62	72	58	66	70
OGDEN	879	94	32	32 - 71	34	35	28	31	33	29	36	36	29	31	31	23	34	42	34	32	32	28
CENTRAL MIDDLE	165	88	62	16 - 50	18	16	17	23	13	18	13	15	15	12	9	10	22	22	22	20	20	

District/School	2002			2002 Expected Battery	Test Scores by Year (Median Percentile Rank)																			
	Students Tested		% Free Lunch		Battery			Math			Reading			Language			Science			Soc. Sci.				
	Count	%			00	01	02	00	01	02	00	01	02	00	01	02	00	01	02	00	01	02		
8th Grade																								
RICH	47	98	51	28	-	66	56	62	66	66	64	76	53	56	59	47	62	66	62	62	58	52	62	58
RICH MIDDLE	47	98	46	23	-	59	56	62	66	66	64	76	53	56	59	47	62	66	62	62	58	52	62	58
SALT LAKE CITY	1694	93	55	27	-	66	54	41	40	58	41	39	53	41	43	47	40	37	58	42	42	58	40	40
BRYANT MIDDLE	313	94	47	22	-	58	58	51	52	60	50	54	56	46	51	50	47	50	62	58	54	58	52	45
CLAYTON MIDDLE	290	99	28	31	-	69	66	67	64	74	71	73	71	67	67	58	62	58	67	67	62	66	66	62
GLENDALE MIDDLE	271	92	94	7	-	32	31	21	22	31	23	20	27	18	22	23	19	19	30	22	22	32	20	24
HILLSIDE MIDDLE	363	92	48	22	-	57	59	50	47	62	52	47	61	51	51	54	47	47	62	54	47	62	52	52
HORIZONTE	10	50	51	21	-	56	27	13	11	17	10	14	10	12	15	8	4	6	47	12	10	40	20	6
NORTHWEST MIDDLE	374	91	78	11	-	40	30	24	21	31	18	20	31	26	22	28	23	21	34	30	22	32	24	24
WEST HIGH ELP	73	99	46	23	-	59	91	93	92	97	97	96	93	93	93	84	91	91	92	92	92	89	89	89
SAN JUAN	276	93	65	25	-	63	33	24	27	35	25	29	34	22	24	25	21	25	38	30	30	36	24	24
LYMAN, A. R. MIDDLE	111	95	60	17	-	51	41	33	38	50	33	39	43	31	36	31	31	37	42	38	42	45	32	36
MONTICELLO HIGH	48	96	32	29	-	66	55	61	55	62	66	54	53	67	53	54	54	47	62	62	58	52	58	52
MONUMENT VALLEY HIGH	41	98	91	8	-	33	12	10	12	13	16	17	7	7	7	8	10	12	16	10	19	20	12	12
WHITE HORSE HIGH	76	88	83	10	-	38	15	12	13	16	16	18	15	9	10	12	8	12	19	19	22	15	12	12
SEVIER	347	97	43	30	-	68	52	50	48	54	54	54	53	51	46	43	43	43	58	62	58	52	45	45
NORTH SEVIER MIDDLE	91	97	42	24	-	61	47	46	43	58	52	45	46	46	39	43	47	40	54	54	54	40	45	40
RED HILLS MIDDLE	171	97	35	28	-	65	55	54	53	58	56	56	53	51	51	43	40	47	67	67	67	52	45	40
SOUTH SEVIER MIDDLE	85	99	50	21	-	56	51	49	48	47	47	54	53	46	36	47	47	40	54	54	54	58	58	52
SOUTH SANPETE	191	99	37	31	-	70	53	57	53	54	60	58	51	51	51	43	47	43	58	62	58	52	58	52
EPHRAIM MIDDLE	126	99	41	25	-	61	51	52	54	54	58	60	48	51	53	40	43	43	58	58	62	45	52	52
GUNNISON VALLEY MIDDLE	65	98	47	22	-	58	54	60	49	56	64	56	53	53	43	43	50	43	58	67	58	58	62	52
SOUTH SUMMIT	106	99	12	37	-	75	60	56	56	69	73	71	59	46	48	54	50	50	67	58	62	52	52	52
SOUTH SUMMIT MIDDLE	105	100	16	38	-	74	60	56	56	69	73	71	59	46	48	54	50	50	67	58	62	52	52	52
TINTIC	27	89	62	26	-	64	58	39	41	76	43	37	61	43	43	47	40	40	67	34	47	62	36	36
CALLAO ELEM	3	100							78						83			78						58
TINTIC HIGH	21	86	39	26	-	63	51	35	36	73	27	37	46	34	41	34	43	37	54	34	38	45	36	32
WEST DESERT HIGH	3	100	93	8	-	32	68	51		78	58	20	77	59	41	62	34	37	76	38	19	66	40	40
TOOELE	734	96	33	32	-	70	45	46	47	47	47	50	43	46	46	40	40	43	54	54	54	40	45	45
DUGWAY HIGH	18	89	14	39	-	75	43	53	50	52	45	50	34	51	61	40	34	54	47	67	38	36	52	40
GRANTSVILLE MIDDLE	227	98	33	29	-	66	48	52	47	50	54	52	51	51	46	43	40	47	47	58	54	52	52	45
TOOELE JR HIGH	440	100	33	29	-	66	44	45	47	47	47	52	43	46	46	40	40	43	54	54	54	40	45	45
WENDOVER HIGH	33	79	67	15	-	47	23	24	19	29	25	20	18	20	16	23	21	21	26	30	19	28	28	24
UINTAH	443	97	41	30	-	69	47	44	45	47	43	47	48	43	43	43	40	40	58	54	54	45	45	40
VERNAL JUNIOR	391	97	41	25	-	61	51	47	46	54	45	50	53	48	48	47	43	43	58	58	54	52	52	45
WEST MIDDLE	51	96	59	17	-	51	21	19	21	20	18	18	19	14	15	16	14	19	26	30	30	24	20	20
WASATCH	310	96	18	35	-	73	53	55	54	52	58	52	48	56	53	50	50	50	62	62	62	52	52	52
WASATCH MIDDLE	310	96	20	35	-	72	53	55	54	52	58	52	48	56	53	50	50	50	62	62	62	52	52	52
WASHINGTON	1496	96	22	34	-	73	51	54	54	52	54	54	51	53	53	47	50	47	54	54	58	52	58	58
DIXIE MIDDLE	432	96	16	38	-	74	51	54	57	50	56	54	56	56	59	50	54	54	54	58	58	52	52	62
ENTERPRISE HIGH	52	100	44	24	-	60	58	56	60	78	62	69	56	61	53	43	47	58	42	54	54	40	52	52
HURRICANE MIDDLE	248	90	47	22	-	58	45	55	48	43	58	50	43	56	41	47	50	40	54	58	54	45	52	45
PINE VIEW MIDDLE	369	96	12	40	-	76	51	55	53	56	56	60	53	56	51	47	54	47	58	58	58	52	62	58
SNOW CANYON MIDDLE	397	98	29	31	-	68	51	49	53	54	50	54	51	51	53	47	43	43	54	47	54	52	52	58
WAYNE	40	100	48	29	-	67	53	56	46	62	47	52	46	56	46	54	58	37	58	72	54	40	45	40
WAYNE MIDDLE	40	100	53	20	-	55	53	56	46	62	47	52	46	56	46	54	58	37	58	72	54	40	45	40
WEBER	2210	97	21	35	-	73	53	51	53	56	52	58	51	51	53	50	47	47	58	58	58	58	52	58
BELL, T. H. JR HIGH	211	94	35	28	-	65	43	41	43	41	41	39	46	46	48	37	34	37	54	47	47	45	45	52
CANYON VIEW JR	6	33	55	19	-	54			4				4		5			3						3
DAY TREATMENT	3	67	11	40	-	76		16	3		13	12		31	1		8	1		6	5		4	3
NORTH ODGEN JR HIGH	457	100	11	40	-	76	62	64	62	66	71	69	59	67	61	62	58	54	62	67	62	66	66	66
PROJECT SUCCES	3	100	100	6	-	29			66			66			56			58			80			78
ROCKY MOUNTAIN JR HIGH	34																							

District/School	2002			2002 Expected Battery	Test Scores by Year (Median Percentile Rank)																			
	Students Tested		% Free Lunch		Battery			Math			Reading			Language			Science			Soc. Sci.				
11th Grade	Count	%		00	01	02	00	01	02	00	01	02	00	01	02	00	01	02	00	01	02			
ALPINE	3513	92	13	47	-	69	62	62	62	73	73	73	65	60	60	53	53	53	67	67	67	62	62	62
ALPINE LIFE & LEARNING	110	80	16	35	-	68	39	41	34	38	50	38	37	41	30	26	30	22	53	40	40	33	33	33
AMERICAN FORK HIGH	477	82	11	36	-	70	62	66	64	73	77	77	65	60	60	47	53	53	73	73	73	62	68	62
LEHI HIGH	394	94	10	37	-	70	57	56	57	68	68	68	55	50	55	47	47	47	67	67	67	52	52	52
LONE PEAK HIGH	559	98	5	38	-	71	65	67	67	73	77	77	65	69	65	53	59	59	73	73	73	62	62	68
MOUNTAIN VIEW HIGH	481	91	13	36	-	69	59	58	59	68	68	68	65	60	65	53	53	53	67	62	67	52	52	52
OREM HIGH	478	90	10	37	-	70	64	64	66	68	73	73	65	65	65	53	53	53	67	67	73	68	62	68
PLEASANT GROVE HIGH	503	91	9	37	-	70	61	62	63	73	73	73	60	65	60	47	53	59	67	67	67	62	62	62
SUMMIT HIGH									24			31			17			14			33			33
TIMPANOGOS HIGH	511	94	11	36	-	70	69	63	64	80	77	80	69	60	60	59	47	53	73	73	73	68	62	62
BEAVER	95	89	40	41	-	64	54	59	56	68	68	73	50	55	55	47	53	41	62	62	62	42	62	52
BEAVER HIGH	61	92	27	32	-	65	56	62	55	73	73	73	55	55	55	47	59	35	62	62	62	52	68	52
MILFORD HIGH	34	85	27	32	-	65	49	39	59	57	50	68	41	30	60	47	35	41	62	40	62	42	33	62
BOX ELDER	850	95	32	43	-	65	58	55	56	73	68	73	60	60	60	47	41	47	62	53	62	52	52	42
BEAR RIVER HIGH	344	98	22	33	-	66	58	53	55	73	63	68	55	55	55	47	41	47	62	62	62	52	42	42
BEHS ALT.	28	61	22	33	-	66			29			38			37			22			27			21
BOX ELDER HIGH	477	96	19	34	-	67	60	57	61	68	73	77	65	60	60	53	47	47	62	53	62	52	52	52
CACHE	989	93	27	44	-	66	60	57	62	68	68	73	60	60	60	47	47	53	67	62	67	62	52	62
CACHE HIGH	21	71	20	34	-	67	27	38	31	31	50	38	22	37	27	11	26	14	21	40	40	42	33	33
MOUNTAIN CREST HIGH	465	93	21	33	-	67	63	57	64	73	68	77	60	60	65	53	47	53	67	62	67	68	52	68
SKY VIEW HIGH	499	95	18	34	-	68	57	57	56	68	68	68	60	60	55	47	47	47	67	62	62	52	52	52
CARBON	343	96	47	40	-	62	51	54	49	63	57	57	45	50	45	41	41	41	62	67	53	52	52	52
CARBON HIGH	303	96	25	32	-	66	51	55	50	63	63	63	50	55	50	41	41	41	62	67	53	52	52	52
EAST CARBON HIGH	34	97	67	21	-	52	47	45	45	57	50	50	41	45	41	35	35	30	62	62	62	52	42	42
LIGHTHOUSE ALTERNATIVE	6	100	78	18	-	48		25	33		38	57		11	15		22	26		33	40		33	52
DAGGETT	20	100	33	43	-	65	45	40	48	57	63	68	41	37	45	35	22	41	53	53	42	42	33	
MANILA HIGH	20	100	28	31	-	65	45	40	48	57	63	68	41	37	45	35	22	41	53	53	53	42	42	33
DAVIS	4580	89	21	45	-	68	62	61	61	73	73	73	60	60	60	53	47	47	67	67	67	62	62	62
BOUNTIFUL 3-6	27	41	28	31	-	65	24		21	31		31	22		17	11		4	27		21			33
BOUNTIFUL HIGH	478	96	11	36	-	70	67	67	69	77	77	80	65	69	69	59	53	59	73	73	77	68	62	68
CLEARFIELD 3-6	27	59	39	28	-	61	33		28	38		38	41		22	18		14	33		33			33
CLEARFIELD HIGH	697	88	23	33	-	66	56	55	48	63	68	63	55	55	45	47	41	41	62	62	53	52	52	42
DAVIS HIGH	717	98	9	37	-	70	68	69	69	77	77	77	69	69	69	53	59	59	73	73	73	68	68	68
FARM-DAVIS HIGH	27	100	11	36	-	70	20	27	39	18	31	38	17	30	41	11	11	22	21	21	53	27	42	42
LAYTON HIGH	625	80	19	34	-	67	58	58	57	68	68	68	60	60	60	47	47	47	62	67	62	62	52	52
MOUNTAIN HIGH	91	29	46	26	-	59	30	20	24	38	18	31	30	24	34	18	6	8	33	21	27	27	21	21
NORTHRIDGE HIGH	751	93	18	34	-	68	57	56	56	63	63	68	60	55	55	47	47	47	62	62	62	52	52	52
VIEWMONT HIGH	617	96	10	37	-	70	66	67	68	77	80	80	65	65	65	59	59	53	73	73	77	62	62	68
WOODS CROSS HIGH	417	95	17	35	-	68	64	59	57	73	68	68	65	65	60	59	47	47	62	62	62	62	52	52
YOUNG PARENTS	35	77	60	22	-	54	26	33	39	31	24	50	22	41	45	22	35	26	27	33	40	21	33	27
DUCHESNE	328	84	40	41	-	64	49	55	60	63	68	77	45	55	55	35	41	41	62	62	67	42	52	62
ALTAMONT HIGH	46	96	21	33	-	67	56	52	66	73	77	80	55	45	65	47	35	53	67	62	77	52	42	68
DUCHESNE HIGH	49	84	35	29	-	62	59	50	63	73	73	77	55	45	60	47	41	47	53	62	67	68	33	68
TABIONA HIGH	13	100	58	23	-	55	46	42	45	68	38	63	34	45	55	41	41	41	53	40	33	33	42	27
THOMPSEN	8	88	63	22	-	53	22	23	13	31	24	31	17	17	17	8	22	4	27	21	7	21	33	8
UNION HIGH	210	80	29	31	-	64	48	58	58	63	68	77	45	60	55	30	47	41	62	67	67	42	52	52
EMERY	202	99	42	41	-	63	56	50	56	63	57	63	55	50	60	47	47	47	62	53	53	52	42	52
EMERY HIGH	192	98	30	31	-	64	56	49	56	63	57	63	55	45	60	47	47	47	62	53	53	52	42	52
GREEN RIVER HIGH	10	100	38	28	-	61	59	74	54	63	57	63	50	77	60	65	65	53	67	81	40	62	78	62
GARFIELD	95	97	47	40	-	62	64	42	52	73	63	68	65	37	50	47	35	41	62	40	62	73	33	52
BRYCE VALLEY HIGH	25	96	43	27	-	60	53	49	57	50	68	68	55	37	50	30	41	47	62	67	67	68	42	52
ESCALANTE HIGH	22	100	42	27	-	60	58	49	48	63	57	63	60	50	50	47	35	35	53	40	53	68	52	42
PANGUITCH HIGH	48	96	29	31	-	64	70	37	52	86	68	68	73	30	41	53	26	41	62	40	67	73	21	52
GRAND	126	87	44	40	-	63	54	55	54	63	57	63	50	60	50	35	47	41	67	67	62	62	52	52
GRAND HIGH	126	87	34	30	-	63	54	55	54	63	57	63	50	60	50	35	47	41	67	67	62	62	52	52
GRANITE	5059	82	29	43	-	66	56	56	56	68	68	63	55	50	50	47	47	47	62	62	62	52	52	52
CENTRAL HIGH	114	47	8	37	-	71	30	30	40	50	38	50	27	30	41	11	18	26	27	33	40	27	27	42
COTTONWOOD HIGH	561	87	11	36	-	70	62	62	58	73	73	68	60	60	55	53	53	53	67	67	67	62	62	52
CYPRUS HIGH	482	78	20	34	-	67	47	48	47	57	63	57	45	45	45	41	41	41	53	53	53	42	42	42
GRANGER HIGH	502	76	27	32	-	65	43	41	39	57	57	57	41	34	37	35	30	30	40	40	40	42	42	33
GRANITE HIGH	326	86	27	32	-	65	39	36	33	50	50	38	34	34	34	35	26	26	40	40	33	42	33	33
HUNTER HIGH																								

District/School	2002			2002	Test Scores by Year (Median Percentile Rank)																	
	Students Tested	% Free Lunch	% Free Lunch		Expected Battery	Battery			Math			Reading			Language			Science			Soc. Sci.	
11th Grade	Count	%			00	01	02	00	01	02	00	01	02	00	01	02	00	01	02	00	01	02
PAROWAN HIGH	78	99	15	35 - 69	59	49	63	68	57	73	55	45	60	53	30	53	62	53	67	62	62	62
JORDAN	5792	91	16	46 - 69	63	61	62	68	68	73	60	60	60	53	53	53	67	67	67	62	62	62
ALTA HIGH	869	97	7	38 - 71	64	64	64	73	73	73	65	65	65	53	53	53	67	67	67	62	62	62
BINGHAM HIGH	666	97	8	37 - 71	67	63	65	73	68	73	65	60	60	59	53	53	73	67	73	68	62	62
BRIGHTON HIGH	726	88	6	38 - 71	70	72	70	73	77	80	73	73	69	59	65	59	73	77	77	73	73	68
COPPER HILLS HIGH	591	85	21	33 - 67	57	54	54	63	63	63	55	50	50	47	41	47	62	62	62	52	52	52
HILLCREST HIGH	579	90	20	34 - 67	56	56	61	63	68	73	50	55	50	47	47	47	62	62	73	62	52	68
JORDAN HIGH	718	94	15	35 - 69	65	65	61	73	73	68	65	65	60	53	59	53	67	67	67	68	62	62
RIVERTON HIGH	722	97	14	35 - 69	58	56	58	63	63	63	60	50	55	47	41	47	62	62	67	62	62	62
VALLEY HIGH	175	49	15	35 - 69	32	38	26	38	38	38	37	41	22	22	26	18	33	53	27	27	27	27
WEST JORDAN HIGH	733	92	20	34 - 67	58	54	57	68	63	68	60	55	55	53	47	47	62	62	67	52	42	52
JUAB	131	95	34	42 - 65	56	60	59	68	73	77	55	60	60	41	47	47	62	62	62	62	62	52
JUAB HIGH	131	95	30	31 - 64	56	60	59	68	73	77	55	60	60	41	47	47	62	62	62	62	62	52
KANE	111	88	46	40 - 63	56	54	57	57	63	63	55	55	55	47	41	47	62	62	62	62	52	52
BIGWATER HIGH	2	100	69	20 - 51	48	27	36	38	31	50	65	34	34	35	6	47	73	33	21	33	27	42
KANAB HIGH	77	83	30	31 - 64	51	54	59	63	63	77	50	55	60	47	47	47	53	62	62	42	42	52
LAKE POWELL HIGH	3	100	54	24 - 56	60	45	10	50	63	18	69	55	7	47	22	1	67	53	27	78	52	21
VALLEY HIGH	29	100	36	29 - 62	58	59	54	57	73	50	60	55	50	41	35	41	62	67	62	68	62	62
LOGAN	435	91	36	42 - 65	64	63	57	73	68	73	65	60	55	53	53	41	67	67	62	68	62	52
LOGAN HIGH	399	91	26	32 - 65	67	63	60	73	68	73	69	65	60	53	53	41	73	67	67	68	62	62
LOGAN SOUTH CAMPUS	36	86	29	31 - 64	28	18	20	31	31	18	27	15	17	18	8	14	27	16	27	27	15	27
MILLARD	269	96	38	41 - 64	60	55	56	73	63	68	60	50	55	53	47	47	67	67	62	52	42	52
DELTA HIGH	186	94	29	31 - 64	61	54	57	77	68	73	60	50	55	53	47	47	67	67	62	52	33	52
ESKDALE HIGH	7	100					69			73			69			65			62			73
MILLARD HIGH	77	100	34	30 - 63	59	51	49	68	57	63	60	50	50	53	41	41	67	62	53	52	42	42
MORGAN	172	94	16	46 - 69	64	64	61	80	80	68	65	60	60	53	53	53	73	73	67	62	62	62
MORGAN HIGH	172	94	16	35 - 68	64	64	61	80	80	68	65	60	60	53	53	53	73	73	67	62	62	62
MURRAY	507	91	20	45 - 68	57	57	59	68	73	73	55	50	60	47	41	47	67	67	67	52	52	52
CREEKSIDE HIGH	46	74	22	33 - 66	27	25	27	31	38	38	30	27	22	14	14	18	27	27	33	27	27	21
MURRAY HIGH	461	93	13	36 - 69	59	58	62	73	73	73	60	55	65	47	47	53	67	67	67	52	52	62
NEBO	1510	87	17	46 - 68	57	58	58	68	68	68	60	55	60	47	47	47	62	67	67	52	52	52
LANDMARK HIGH	59	29	8	37 - 71	28	17	27	24	31	31	27	15	27	22	2	14	27	27	53	33	21	21
PAYSON HIGH	441	87	17	35 - 68	57	51	58	68	63	68	55	45	60	47	35	47	62	62	67	52	42	52
SPANISH FORK HIGH	562	91	13	36 - 69	56	60	56	68	68	68	60	60	55	41	47	41	62	67	67	52	62	52
SPRINGVILLE HIGH	443	89	13	36 - 69	65	60	62	73	68	73	65	60	60	53	47	53	67	67	67	62	62	62
YOUNG PARENTS	5	60	4	39 - 72	26	45	26	50	50	38	13	55	19	22	35	14	21	40	33	42	42	27
NORTH SANPETE	211	92	47	40 - 62	43	42	45	57	50	63	41	37	37	41	35	35	40	40	53	33	42	33
NORTH SANPETE HIGH	211	86	44	27 - 59	43	42	45	57	50	63	41	37	37	41	35	35	40	40	53	33	42	33
YOUTH SERVICES							24			31			27			14			27			21
NORTH SUMMIT	77	86	12	47 - 69	60	60	59	68	63	73	55	60	60	47	47	47	67	67	67	62	68	52
NORTH SUMMIT HIGH	77	86	15	35 - 69	60	60	59	68	63	73	55	60	60	47	47	47	67	67	67	62	68	52
OGDEN	928	91	32	43 - 65	41	37	36	50	50	50	41	37	37	30	26	26	40	40	33	42	33	33
ARCHWAY					10	26	40	4	24	50	17	30	27	22	22	47	4	21	40	5	27	33
BEN LOMOND HIGH	409	84	4	39 - 72	40	39	42	57	50	50	41	41	45	26	30	40	40	40	40	33	33	42
DAY TREATMENT					22	23	12	31	31	4	24	27	13	22	14	6	7	11	16	21	21	21
MILLCREEK YOUTH CENTER	15	100	0	40 - 73	26	47	27	57	38	24	30	50	30	8	35	22	21	62	33	27	52	33
OGDEN HIGH	397	93	36	29 - 62	52	40	37	57	50	50	45	37	41	35	30	26	53	33	33	62	42	33
OGDEN O & A CENTER					41	21	51	31	24	38	22	17	85	35	8	65	77	33	27	52	27	15
PROJ PARAMOUNT							7			4			11			6			7			8
WASHINGTON HIGH	106	90	57	23 - 55	31	25	24	38	31	31	34	24	22	22	14	14	27	27	27	33	27	27
WASHINGTON YIC	10	100	0	40 - 73	20		17	24		31	22		15	6		3	27		21	21		21
PARK CITY	308	94	14	47 - 69	69	67	67	77	77	73	69	65	65	59	53	53	73	77	77	73	68	73
PARK CITY HIGH	297	93			69	67	67	77	77	77	69	65	69	59	53	53	73	77	77	73	68	73
TECH & LEARNIN	12	100					43			50			34			26			40			62
PIUTE	23	96	25	44 - 67	53	50	47	63	68	63	55	45	55	41	53	41	62	53	53	52	33	33
PIUTE HIGH	23	96	22	33 - 66	53	50	47	63	68	63	55	45	55	41	53	41	62	53	53	52	33	33
PROVO	990	91	36	42 - 65	65	61	64	73	73	77	65	60	65	53	47	53	67	67	67	62	62	62
INDEPENDENCE HIGH	92	77	70	20 - 51	32	26	27	38	31	38	34	24	24	22	14	18	33	27	27	33	27	33
OAK SPRINGS	3	100					25			2			34			30			21			21
PROVO HIGH	446	93	30	31 - 64	58	59	60	73	68	73	65	60	65	47	47	53						

District/School	2002			2002 Expected Battery	Test Scores by Year (Median Percentile Rank)																	
	Students Tested		% Free Lunch		Battery			Math			Reading			Language			Science			Soc. Sci.		
	Count	%			00	01	02	00	01	02	00	01	02	00	01	02	00	01	02	00	01	02
11th Grade																						
MONTICELLO HIGH	47	91	32	30 - 63	67	59	48	77	68	63	69	55	45	59	53	35	73	53	62	68	62	42
MONUMENT VALLEY HIGH	27	89	91	16 - 44	21	26	26	31	38	38	15	17	24	18	18	18	27	33	27	27	27	27
NAVAJO MOUNTAIN HIGH	7	86	79	18 - 48	21	19	12	38	18	7	10	15	7	8	22	11	21	21	16	42	21	21
SAN JUAN HIGH	98	94	48	26 - 58	42	50	44	57	57	57	41	50	37	30	41	35	40	53	53	42	52	42
WHITE HORSE HIGH	43	95	83	17 - 47	22	23	18	31	31	31	15	19	10	18	18	18	27	21	16	27	33	21
SEVIER	366	95	43	40 - 63	50	50	48	63	63	57	41	50	50	41	41	41	62	62	53	42	42	42
CEDAR RIDGE HIGH	25	92	52	24 - 57	47	37	30	38	38	38	50	27	37	41	30	22	62	53	21	42	33	33
NORTH SEVIER HIGH	80	93	31	30 - 64	45	44	53	63	63	63	41	37	55	35	35	41	62	53	62	33	42	52
RICHFIELD HIGH	158	96	34	30 - 63	52	52	51	63	63	57	41	50	55	41	47	47	67	62	53	42	42	42
SOUTH SEVIER HIGH	103	95	47	26 - 59	45	52	47	63	68	57	41	50	45	41	35	22	40	62	67	42	52	42
SOUTH SANPETE	238	97	37	42 - 65	53	48	48	68	63	63	50	45	45	41	41	41	62	53	53	52	42	42
GUNNISON VALLEY HIGH	84	99	32	30 - 63	50	48	46	68	68	57	55	45	41	41	35	35	53	53	53	42	42	42
MANTI HIGH	154	97	27	32 - 65	55	53	52	68	63	63	50	50	45	41	47	47	62	62	62	62	42	42
SOUTH SUMMIT	101	93	12	47 - 69	54	53	54	68	68	63	55	45	50	47	35	47	67	62	62	42	62	52
SOUTH SUMMIT HIGH	99	95	13	36 - 69	54	53	54	68	68	63	55	45	50	47	35	47	67	62	62	42	62	52
TINTIC	24	96	62	36 - 59	60	40	49	73	57	57	41	34	45	47	30	35	73	40	73	68	42	42
TINTIC HIGH	21	95	39	28 - 61	62	32	45	73	50	57	50	30	37	59	18	30	73	27	67	62	42	42
WEST DESERT HIGH	3	100	93	15 - 43	61	62	69	73	80	77	41	55	73	47	35	41	73	81	85	73	73	68
TOOELE	626	92	33	43 - 65	48	50	53	57	57	63	50	50	50	41	41	41	53	62	62	42	42	52
DUGWAY HIGH	20	85	14	35 - 69	70	62	62	77	68	68	65	55	55	53	41	53	85	81	62	73	68	68
GRANTSVILLE HIGH	187	93	18	34 - 68	48	49	57	57	57	63	50	50	60	41	35	41	53	53	62	42	42	62
TOOELE HIGH	356	94	26	32 - 65	53	53	51	57	63	63	55	50	45	47	41	41	53	62	62	52	52	52
TOOELE VALLEY HIGH	34	88	20	34 - 67	22	37	30	31	38	31	24	34	37	4	26	22	33	40	40	21	42	27
WENDOVER HIGH	20	100	67	21 - 52	24	29	29	50	50	38	15	22	27	18	14	18	21	40	33	27	33	33
UINTAH	422	92	41	41 - 64	52	53	53	63	63	68	50	50	50	41	41	41	53	62	62	52	52	42
UINTAH HIGH	420	92	21	33 - 67	54	56	53	63	68	68	50	50	50	41	47	41	62	62	62	52	52	42
WASATCH	300	85	18	46 - 68	57	61	58	68	68	68	60	60	55	47	53	47	67	67	67	52	62	52
WASATCH ALTERNATIVE	9	100	5	38 - 71	35		30	38		38	30		30	26		18	27		33	42		33
WASATCH HIGH	291	85	8	37 - 71	58	61	59	73	68	68	60	60	60	47	53	53	67	67	67	52	62	52
WASHINGTON	1497	90	22	45 - 67	59	56	58	68	63	68	60	55	55	47	47	47	62	62	67	62	52	52
DIXIE HIGH	295	89	12	36 - 70	58	54	59	63	63	73	55	55	55	47	47	47	67	53	67	62	52	52
ENTERPRISE HIGH	55	96	44	27 - 59	57	54	49	68	68	63	55	50	41	47	47	47	73	62	53	62	52	42
HURRICANE HIGH	239	89	8	37 - 71	58	53	56	68	63	63	55	50	55	47	41	41	62	67	62	62	52	52
MILLCREEK HIGH	66	59	11	36 - 70	23	29	30	24	38	31	19	27	24	14	18	26	33	33	33	27	33	33
PINE VIEW HIGH	422	92	5	38 - 71	61	61	62	73	68	73	60	60	60	53	53	53	62	67	67	62	62	62
REACH PROGRAM	4	50	0	40 - 73			7			11			8			6						3
SNOW CANYON HIGH	410	95	8	37 - 71	61	54	58	68	63	68	65	55	60	53	47	47	62	62	67	62	52	52
WAYNE	47	100	48	39 - 62	51	53	54	68	68	63	45	50	60	47	41	35	53	62	67	42	52	52
WAYNE HIGH	47	100	50	25 - 58	51	53	54	68	68	63	45	50	60	47	41	35	53	62	67	42	52	52
WEBER	2152	94	21	45 - 68	57	56	56	68	63	63	55	55	55	53	47	47	62	62	62	52	52	52
BONNEVILLE HIGH	498	96	16	35 - 68	62	57	54	68	63	63	65	60	60	53	47	41	67	62	53	62	52	52
CANYON VIEW	19	68	29	31 - 64	10	13	9	24	18	24	13	7	4	1	3	2	7	21	21	21	15	5
DAY TREATMENT	5	60	11	36 - 70		63	19		89	38		60	17		47	6		33	16		68	27
FREMONT HIGH	578	89	12	36 - 70	56	56	56	68	68	68	50	55	55	47	47	47	62	62	62	52	52	52
ROY HIGH	505	93	20	34 - 67	56	54	47	63	68	57	50	50	45	47	47	41	67	62	53	52	52	42
WEBER HIGH	547	98	8	37 - 71	63	59	60	73	68	68	65	60	60	53	47	53	67	62	62	68	62	62
CHARTER																						
CBA CENTER	10	80	55	38 - 61	8	28	31	11	50	50	13	34	45	1	6	4	16	27	53	15	27	21
CENTER CITY	3	33	0	50 - 72			38			4			50			18			53			78
SUCCESS SCHOOL CHARTER				-		25	10		31	31		22	3		8	3		27	16		42	15
TUACAHN CHARTER	45	89	0	5 - 72	65	61	62	57	57	68	69	65	65	59	59	53	73	62	62	73	68	62
UINTAH RIVER CHARTER					21	22	22	24	31	50	24	13	11	18	11	8	21	21	27	15	42	33

We have moved! Please note our new address and phone numbers:

Utah Foundation
4141 Highland Drive, Suite 102
Salt Lake City, UT 84124

Phone: (801) 272-8824
Fax: (801) 272-7711

This Research Report was written by Research Analyst Sara Sanchez. Ms. Sanchez is available for comments at (801) 272-8824. She may also be contacted by email at: sara@utahfoundation.org. For more information about Utah Foundation, please visit our website: www.utahfoundation.org.



_____	NON PROFIT ORG. U.S. POSTAGE PAID PERMIT NO. 6418

