

*Study conducted for*

## **Utah Foundation**

Utah Priorities Project

*February 15 – February 22, 2012*

*Study conducted by*

**Dan Jones**  
**& ASSOCIATES**

515 East 100 South, Suite 300 · Salt Lake City, UT 84102 · 801.322.5722 · Fax: 801.322.5725  
www.djasurvey.com · info@djasurvey.com

# Table of Contents

<b>Introduction</b> .....	<b>1</b>
Research Objectives.....	1
Procedures .....	1
Questionnaire .....	2
Sample .....	2
Fieldwork .....	2
Limitations .....	3
Data Analysis.....	3
<b>Questions, Charts, and Significant Findings</b> .....	<b>1</b>
Q 1: First of all, are you registered to vote at your current address? .....	4
Q 2: Would you say things in the State of Utah are headed in the right direction or have they gotten off on the wrong track? .....	4
Q 3: How would you rate the overall quality of life in Utah today, compared with five years ago? Would you say it is...? .....	5
Q 4-22: Thinking about issues facing Utah, please rate how concerned you are about each of the following issues. Use a 1-5 scale with one meaning you are “not at all concerned” and five meaning you are “very concerned.” .....	6
Q 4: Kindergarten through 12th grade education .....	7
Q 5: Higher education – that is colleges and universities .....	8
Q 6: Transportation and traffic .....	8
Q 7: Immigration .....	9
Q 8: Jobs and the economy .....	10
Q 9: Crime .....	10
Q 10: Water supply and quality .....	11
Q 11: Environmental issues, including air quality .....	11
Q 12: Utah’s housing market .....	12
Q 13: Taxes.....	12
Q 14: Healthcare .....	13
Q 15: Energy issues, including utilities and gasoline prices .....	13
Q 16: State government spending .....	14
Q 17: Gay rights .....	14
Q 18: Access to public lands.....	15
Q 19: States’ rights .....	15
Q 20: Liquor laws.....	16
Q 21: Poverty.....	16
Q 22: Partisan politics.....	17
Q 23: Can you think of any other important issues that I didn’t mention? .....	18
Q 24: [IF YES] What? (FIRST RESPONSE; TOP RESPONSES SHOWN) .....	18
<b>EDUCATION</b> .....	<b>19</b>
Q 25-35: I’d like to ask about some specific issues relating to kindergarten through 12th grade education in Utah. Please use a 1-5 scale where one means you are “not at all concerned” about the issue, and five means you are “very concerned” about it.....	19
Q 25: Funding for public education .....	20
Q 26: Class size .....	20
Q 27: Teacher quality .....	21
Q 28: Teacher pay.....	21

Q 29: School administration quality.....	22
Q 30: Student performance or test scores .....	22
Q 31: Opportunities for minority children.....	23
Q 32: Curriculum - what students are learning .....	23
Q 33: The option of school choice or vouchers .....	24
Q 34: How well students are prepared for college or careers.....	24
Q 35: Are there any other issues with public education in Utah that you are concerned about?.....	25
Q 36: [IF YES] What? (FIRST RESPONSE; TOP RESPONSES SHOWN) .....	25
<b>JOBS.....</b>	<b>26</b>
Q 37-43: The next few questions deal with working in Utah. Using the same 1-5 scale, how concerned are you with...?.....	26
Q 37: Wages and salaries.....	27
Q 38: Availability of jobs .....	28
Q 39: Quality of jobs available .....	28
Q 40: Risk of being laid off or losing your job.....	29
Q 41: Bringing companies to Utah from out of state.....	29
Q 42: Helping Utah companies grow in the state .....	30
Q 43: The ability of young Utahns to find good jobs in Utah.....	30
<b>ECONOMY .....</b>	<b>31</b>
Q 46-51: The next few questions deal with Utah's economy. Using the same 1-5 scale, how concerned are you with...? (n=781) .....	31
Q 46: Recovery from the economic recession.....	32
Q 47: Falling home prices.....	33
Q 48: Affordability of housing.....	33
Q 49: Overall cost of living.....	34
Q 50: Utah's bankruptcy and foreclosure rates .....	34
Q 51: Unemployment.....	35
<b>PERSONAL FINANCES.....</b>	<b>36</b>
Q 54: In the past two years, how has your level of personal debt changed?.....	36
Q 55: And how has your level of personal savings changed? .....	37
<b>TAXES.....</b>	<b>38</b>
Q 56-61: This time please rate how concerned you are about the following tax issues / taxes. ....	38
Q 56: Your overall tax burden .....	39
Q 57: Spreading the tax burden fairly among Utahns.....	39
Q 58: How your tax dollars are spent.....	40
Q 59: State income taxes .....	40
Q 60: Sales taxes .....	41
Q 61: Property taxes.....	41
<b>PUBLIC SPENDING.....</b>	<b>42</b>
Q 64-70: Considering the major services provided by state and local government, please describe whether you think they should increase spending, keep spending the same, or decrease spending in the following areas .....	42
Q 64: Kindergarten through 12th grade education .....	43

Q 65:	Colleges and universities – Higher education.....	44
Q 66:	Healthcare .....	45
Q 67:	Transportation and roads .....	46
Q 68:	Law enforcement and prisons .....	46
Q 69:	Assistance to low-income people .....	47
Q 70:	Overall state spending .....	47
<b>ENERGY AND ENVIRONMENT .....</b>		<b>48</b>
Q 72-78: Now consider environmental and energy issues in Utah. Using the same 1-5 scale, how concerned are you with...? .....		48
Q 72:	Gas prices.....	49
Q 73:	Development of traditional energy sources, such as drilling for oil and gas .....	50
Q 74:	Development of renewable energy sources, such as wind and solar.....	50
Q 75:	Protection of Utah’s wilderness .....	51
Q 76:	Air pollution .....	52
Q 77:	Water pollution .....	53
Q 78:	Nuclear Waste .....	53
Questionnaire with Longitudinal Results.....		Appendix A
Respondent Comments .....		Appendix B
Computer Cross-Tabulations .....		Appendix C

## Introduction

Dan Jones & Associates, an independent full-service, public opinion and market research firm located in Salt Lake City, Utah, was commissioned by Utah Foundation to conduct and compile a research study of 800 Utah residents about current issues.

### Research Objectives

Primary objectives of this research are to:

- Measure residents' perceptions about the quality of life in Utah
- Identify the level of concern about various public policy issues
- Explore six of these areas in greater depth:
  - Education
  - Jobs
  - Economy
  - Personal finances
  - Taxes
  - Public spending
- Compare results to similar studies conducted in 2004 and 2008

### Procedures

To satisfy the research objectives, telephone surveys and online surveys were conducted with a demographic cross-section of 804 registered voters in Utah. Telephone interviews were conducted February 15 to February 22, 2012, Monday through Friday during evening hours (4:00–9:00 p.m.) and on Saturdays during the day (10:00 a.m.–3:00 p.m.).

Postcards were mailed on February 14, 2012 to 4,500 residences across Utah with an invitation to an online version of the survey.

## Questionnaire

Dan Jones & Associates worked with Steve Kroes of Utah Foundation to formulate a questionnaire that met the objectives of the research.

A short omnibus study was conducted prior to the development of the questionnaire used in this study. A total of 466 responses were collected using telephone and online methods. The results of that study were used to determine issues of top concern among Utahns.

A pretest was conducted prior to any fieldwork to check the questionnaire for length, flow, and clarity. Prior to implementation, the client approved the questionnaire, including any changes resulting from the pretest.

Both structured and unstructured questions were used to measure intensity of opinions and to assess the perceptions of respondents. Demographic questions were asked to provide opinions of subgroups.

The average telephone interview length was about 13 minutes, and the average online survey length was about 12.6 minutes.

## Sample

For the purpose of this research, Dan Jones & Associates utilized a random systematic sampling procedure giving each household in Utah an equal opportunity of being selected for an interview. Respondents were screened to be registered voters in Utah.

The tolerated margin of error for this survey is  $\pm 3.5\%$  for current total data. The margin of error increases for the responses of subgroups within the data. This study has a 95% confidence level, meaning that no more than one time in twenty should chance variations in the sample cause the results to vary by more than the margin of error from the answers that would be obtained if all people in the survey universe were polled.

## Fieldwork

Dan Jones & Associates employs professional, experienced interviewers who have worked on numerous surveys to date and proven to be reliable, thorough, and able to develop excellent rapport with respondents. All telephone interviews were conducted from the Dan Jones & Associates Data Collection Center where interviewers are supervised and monitored.

## Limitations

Dan Jones & Associates recognizes that there are constraints to all survey research. Some of those limitations include: **Time**—fieldwork or data collection is usually conducted in a two-week window, therefore, people who may not be available during the data collection period will be excluded from the sample; **Budget**—it's simply too costly to reach everyone within the survey universe or to ask for opinions on every possible option or issue; and **Access**—not all potential respondents have access to telephones or the internet. Random sampling is used to get the best representation possible.

## Data Analysis

Statistical results were prepared by the staff of Dan Jones & Associates. Each question has a response distribution, as well as a series of cross-tabulations, which organize responses by various demographic groupings and allow for the detection of differences that may exist between opinions of subgroups. SPSS (Statistical Package for Social Science) was used to analyze the data. Statistical tests were conducted to determine if the differences found in the relationships between various populations were real or merely due to chance. Checkmarks (✓) highlight statistically significant findings.

Survey respondents are weighted based on congressional district. Because of rounding, response distribution on individual questions may not always total 100%.

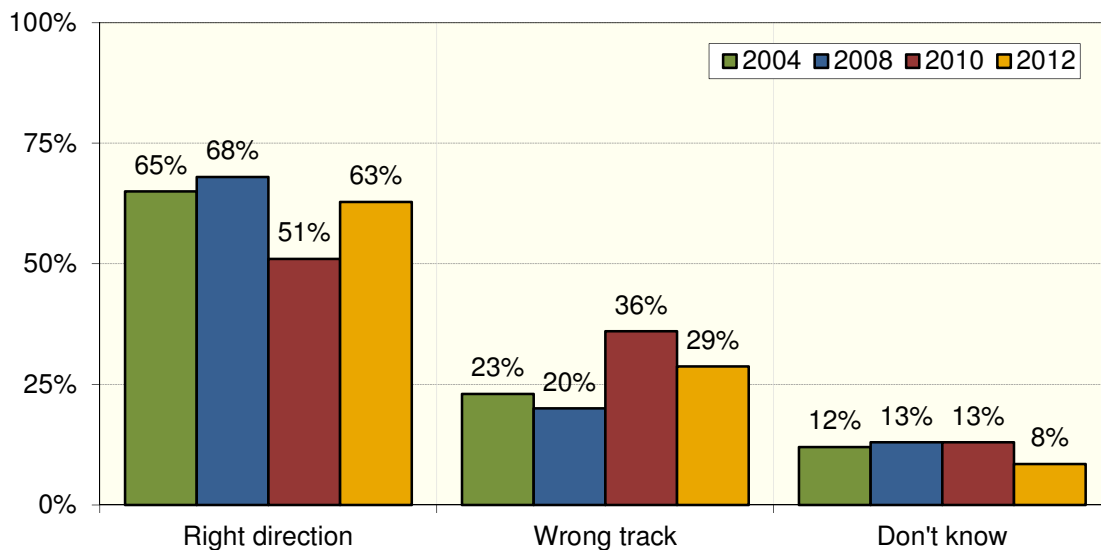
## Questions, Charts, and Significant Findings

**Question 1: (SCREENER) First of all, are you registered to vote at your current address?**

	<u>2004</u>	<u>2008</u>	<u>2010</u>	<u>2012</u>
Yes	100%	100%	100%	100%
No	0%	0%	0%	0%

(IF NO – ASK TO SPEAK WITH SOMEONE WHO IS REGISTERED; IF NO - THANK AND TERMINATE)

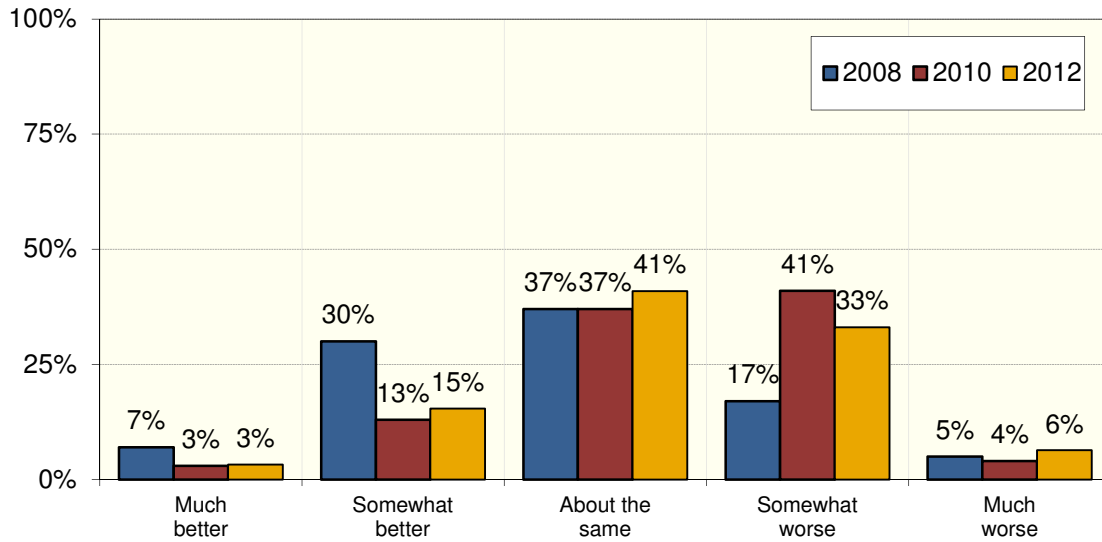
**Question 2: Would you say things in the State of Utah are headed in the right direction or have they gotten off on the wrong track?**



- ✓ Republicans; those whose political ideology is conservative or moderate; those whose religious preference is LDS; those who are active in their preferred religion; those who have a household member currently attending a college, university, or technical school in Utah; those who are either employed full-time, part-time, or who are homemakers or retired; residents of Davis County, Utah County, and residents outside the Wasatch Front are more likely to say they think things in Utah are headed in the *right direction*.
- ✓ Democrats; those whose political ideology is liberal; those who are not active in their preferred religion; and retired residents are more likely to say they think things in Utah have gotten off on the *wrong track*.

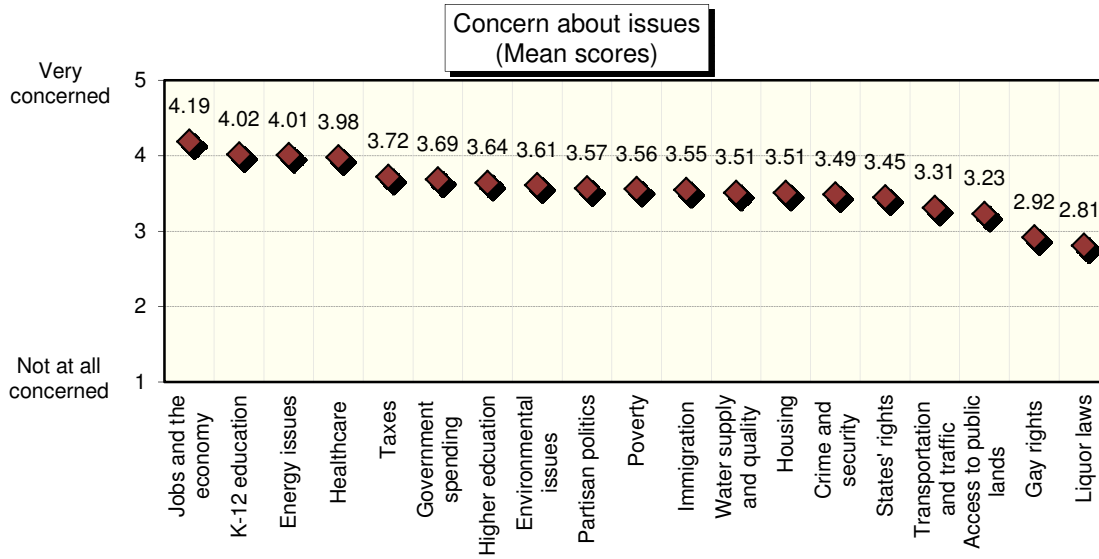


**Question 3: How would you rate the overall quality of life in Utah today, compared with five years ago? Would you say it is...?**



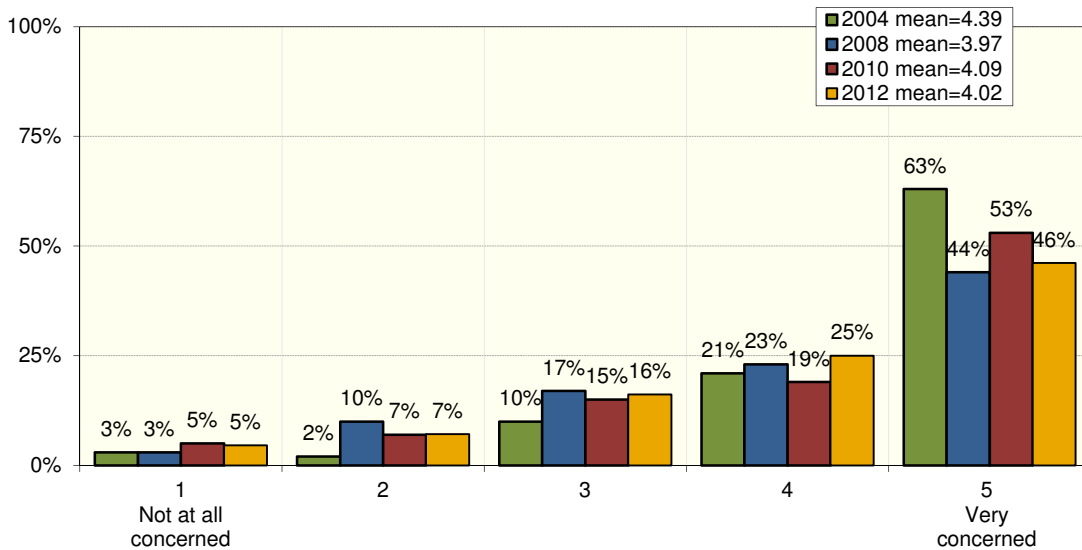
- ✓ Younger residents (likelihood increases as age decreases) are more likely to say the overall quality of life in Utah is better today than it was five years ago.
- ✓ Residents who are not active in their preferred religion, and retired individuals are more likely to say that the overall quality of life in Utah is *about the same* today as it was five years ago.
- ✓ Those who are very conservative, those who are 55-64 years old, those with no religious affiliation, and those who are unemployed are more likely to say the overall quality of life in Utah is *worse* today than it was five years ago.

**Questions 4-22: Thinking about issues facing Utah, please rate how concerned you are about each of the following issues. Use a 1-5 scale with one meaning you are “not at all concerned” and five meaning you are “very concerned.” (The 2004 survey asked residents to rate each issue on its priority to them, and used a scale of 1/ low priority to 5/ high priority.)**



(cont.) How concerned are you about these issues?

**Question 4: Kindergarten through 12th grade education<sup>1</sup>**

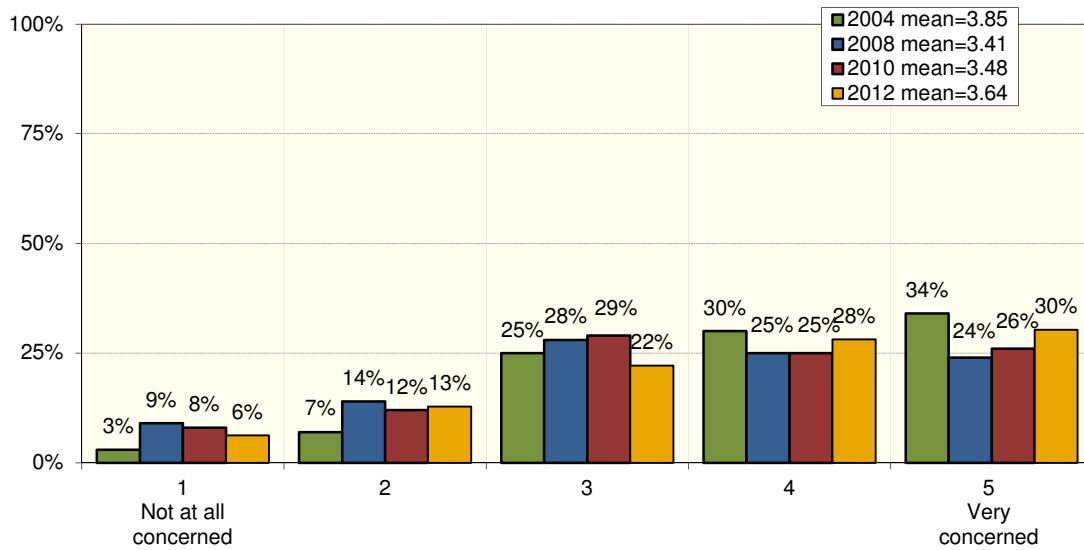


- ✓ Females; residents whose political ideology is moderate or liberal; Catholic residents, those who have no religious preference; those with an “other” marital status (not married or single); those who have children under age 18 living in the home; those who are self-employed; and Davis and Weber County residents are more likely to say they are very concerned about kindergarten through 12th grade education.

<sup>1</sup> “2004: Public education”

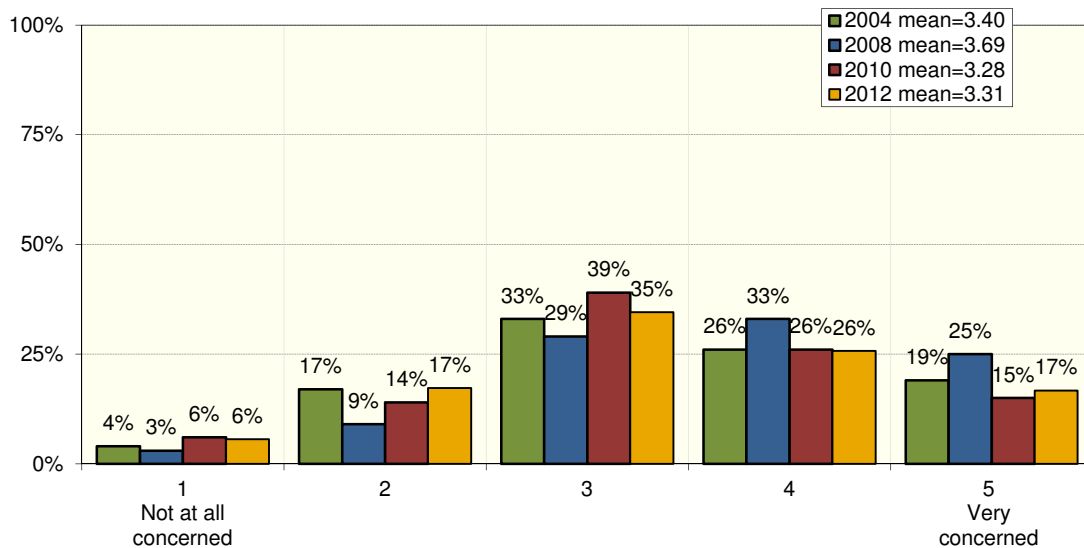
(cont.) How concerned are you about these issues?

**Question 5: Higher education – that is colleges and universities<sup>2</sup>**



- ✓ Democrats; those whose political ideology is liberal (likelihood increases as resident is more liberal); Catholics and Protestants; and residents who have a household member currently attending a college, university or technical school in Utah are more likely to say they are very concerned about education at Utah’s colleges and universities.

**Question 6: Transportation and traffic<sup>3</sup>**

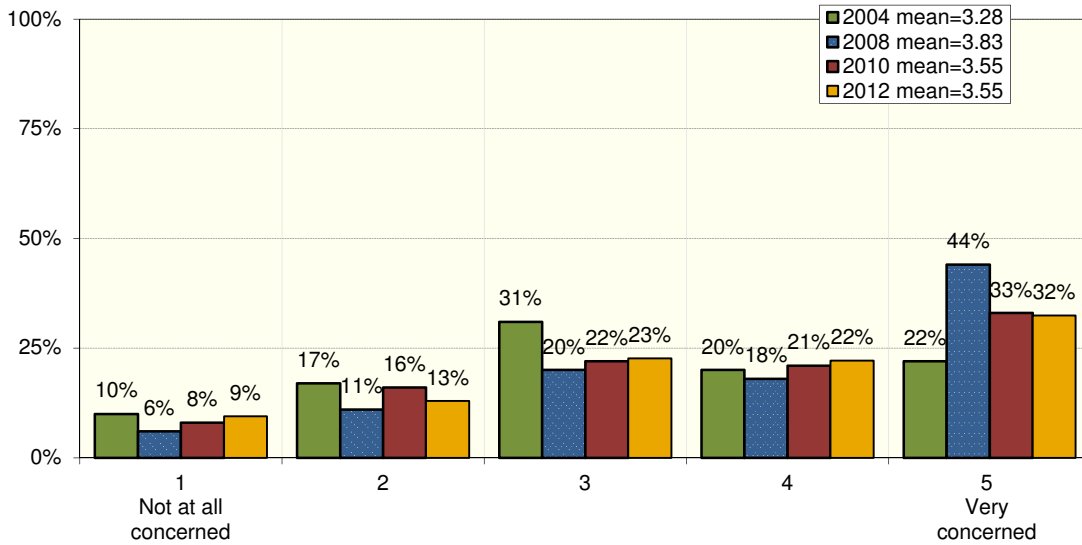


<sup>2</sup> Question was worded differently in the past. 2008 & 2010: “Education at Utah’s colleges and universities”; 2004: “Higher education”

<sup>3</sup> 2004: “Transportation”

(cont.) How concerned are you about these issues?

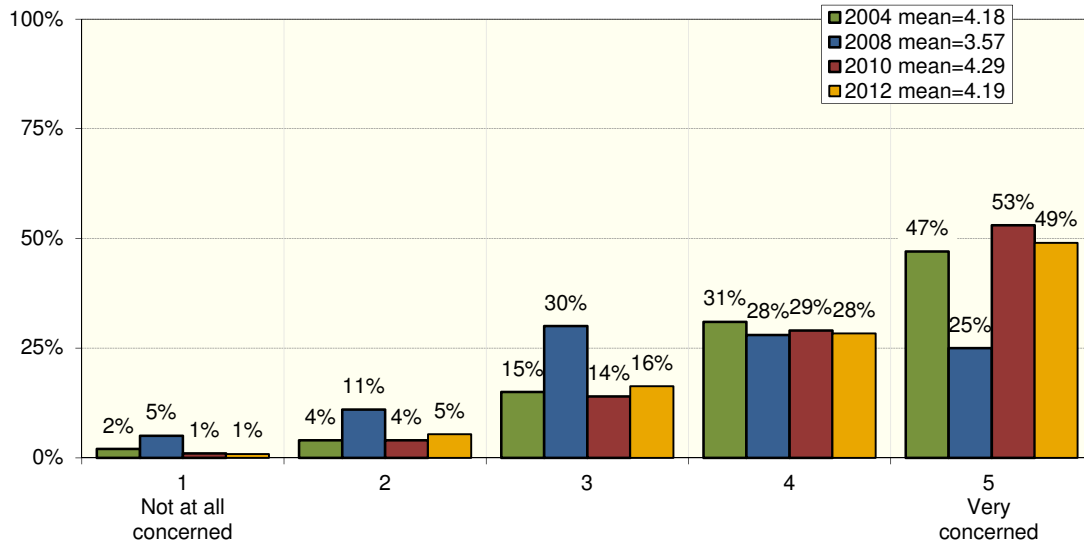
**Question 7: Immigration**



- ✓ Residents 65 years of age and older; those whose political ideology is very conservative; those with an “other” marital status (not married or single) are more likely to say they are very concerned about immigration.

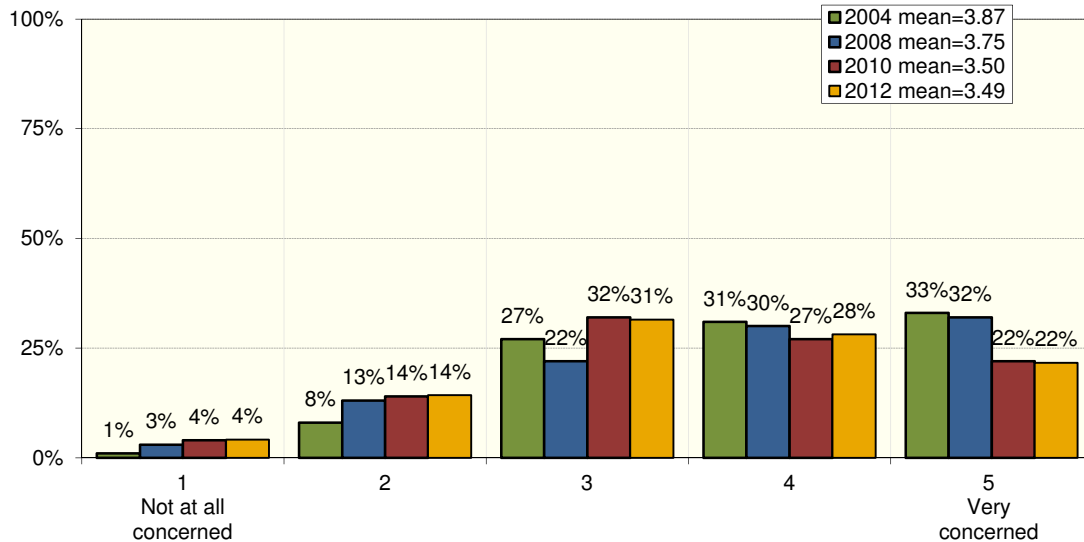
(cont.) How concerned are you about these issues?

**Question 8: Jobs and the economy<sup>4</sup>**



- ✓ Residents who are 45 years old and older; those whose educational attainment is some college / technical school or less; Catholics and Protestants; those who are not active in their religion of choice are more likely to say they are very concerned about jobs and the economy.

**Question 9: Crime<sup>5</sup>**



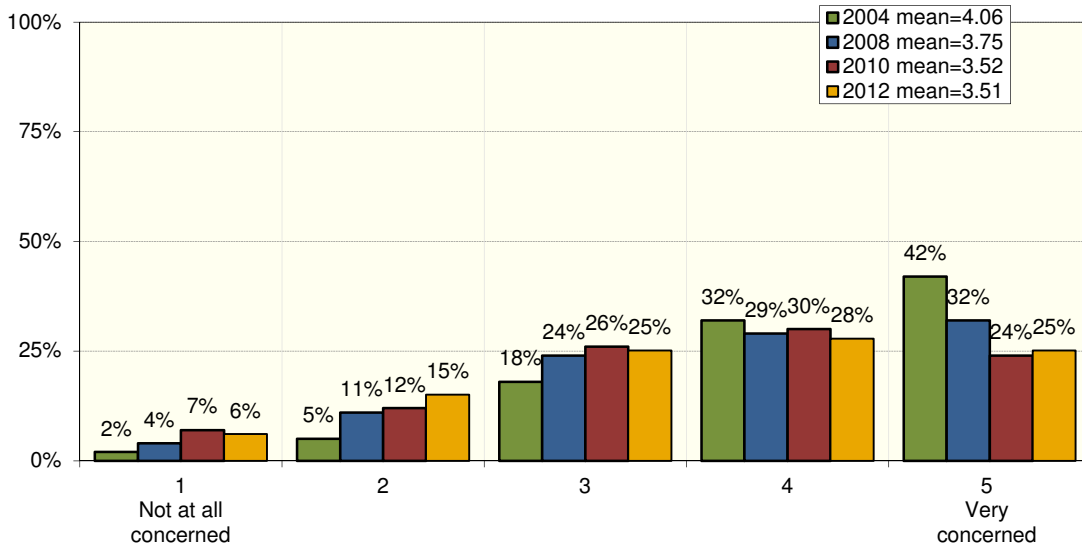
- ✓ Residents with an “other” marital status (not married or single), are more likely to say they are very concerned about this issue.

<sup>4</sup> 2004: “Creating jobs and economic development”

<sup>5</sup> 2008 & 2010: “Crime and security”; 2004: “Crime, security, and safety”

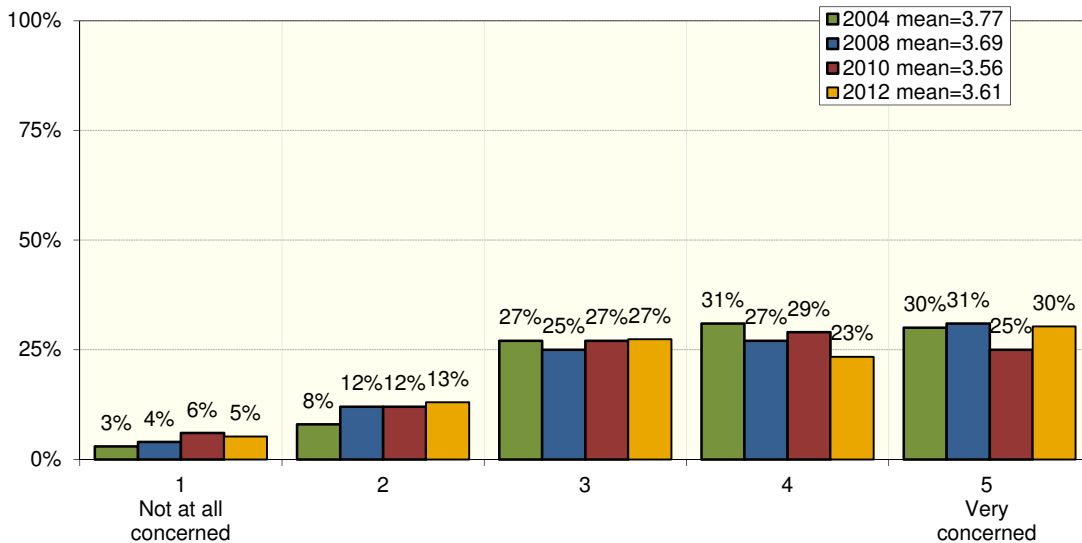
(cont.) How concerned are you about these issues?

**Question 10: Water supply and quality**



- ✓ Those who are not active in their preferred religion are more likely to say they are very concerned about water supply and quality.

**Question 11: Environmental issues, including air quality<sup>6</sup>**

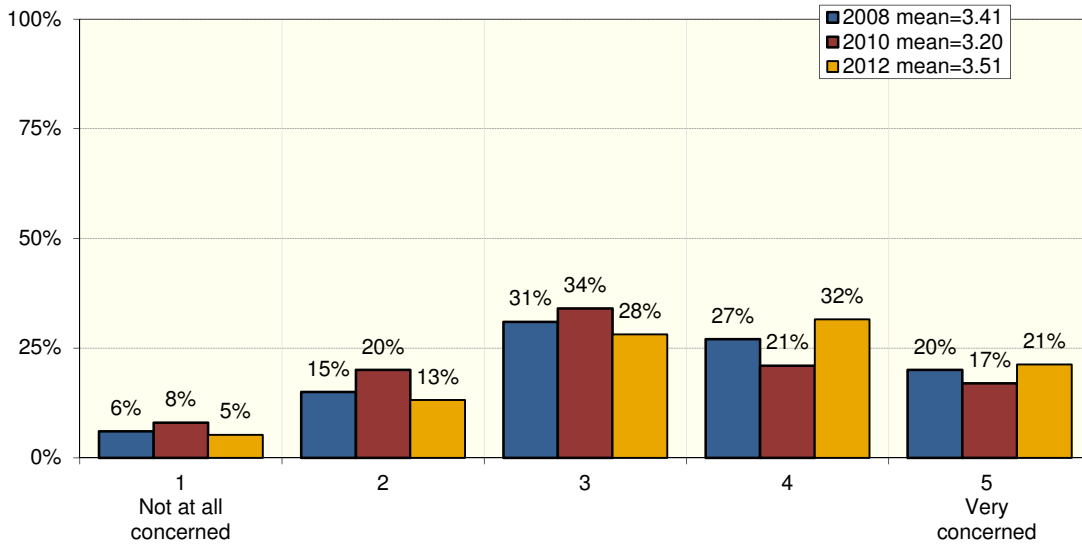


- ✓ Democrats; those whose political ideology is liberal (likelihood increase the more liberal the resident); those with no religion; those with an “other” marital status (not married or single); and Salt Lake County residents are more likely to say they are very concerned about environmental issues.

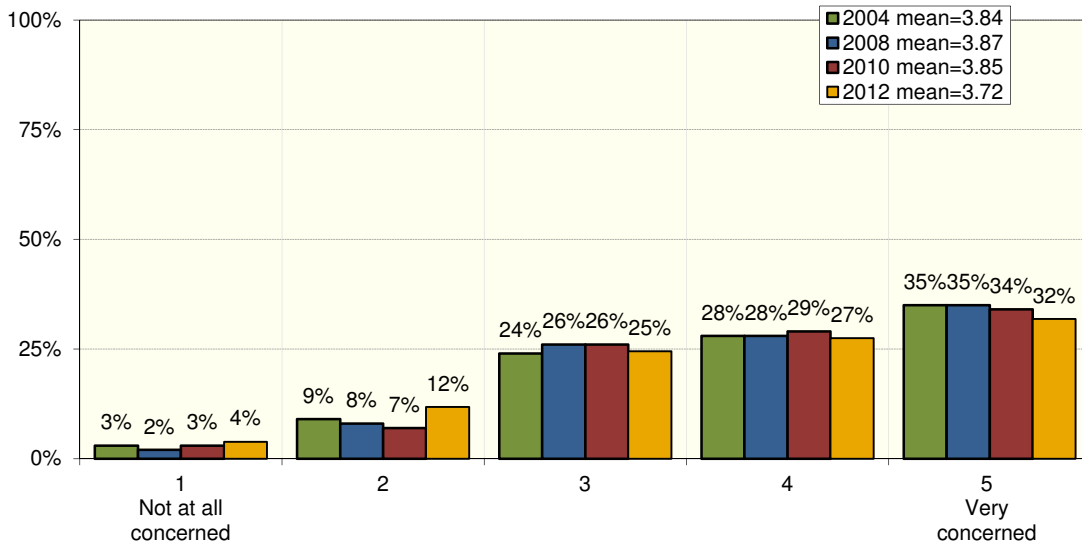
<sup>6</sup> 2008 & 2010: “Environmental issues, including air quality & pollution”; 2004: “Environment and air quality”

(cont.) How concerned are you about these issues?

**Question 12: Utah's housing market<sup>7</sup>**



**Question 13: Taxes**

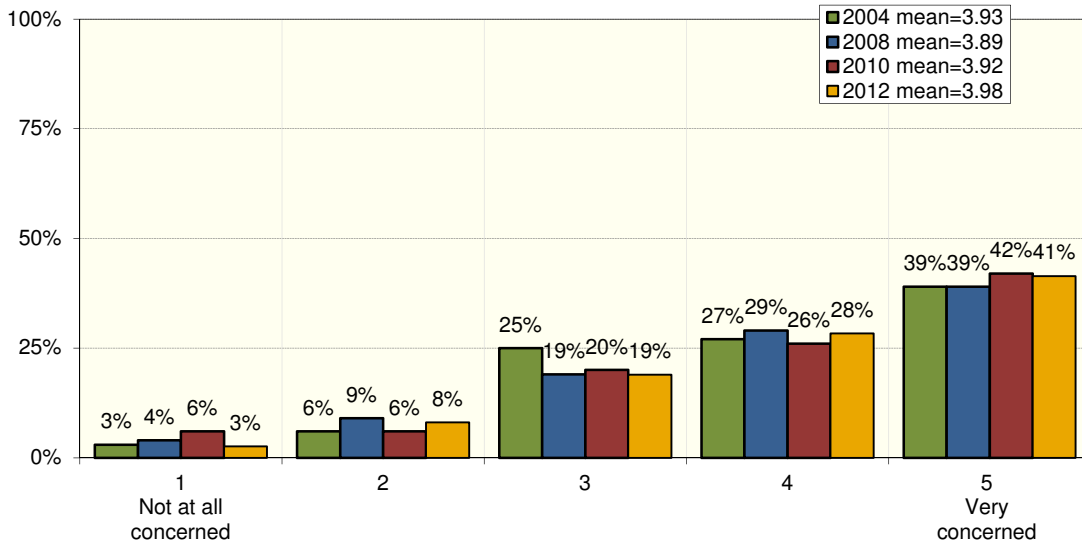


<sup>7</sup> 2004-2010: "Housing"



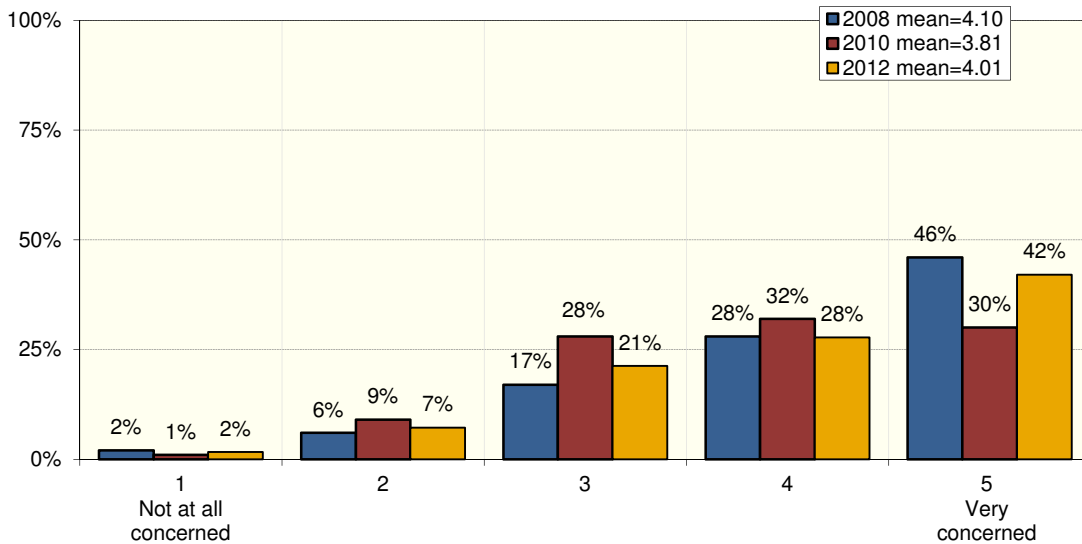
(cont.) How concerned are you about these issues?

**Question 14: Healthcare**



- ✓ Females; 55-64 year olds; and Democrats are more likely to say they are very concerned about health care.

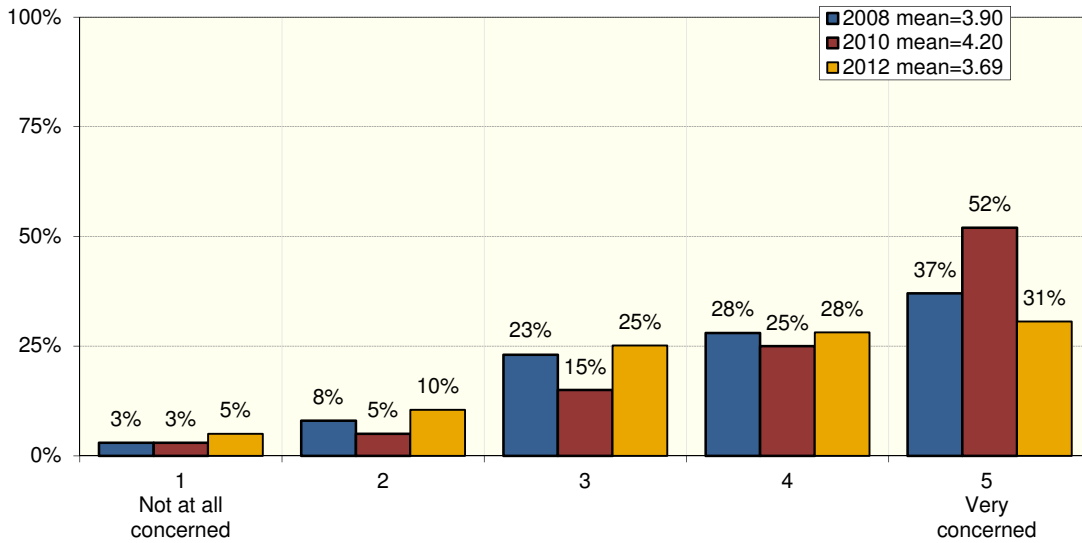
**Question 15: Energy issues, including utilities and gasoline prices**



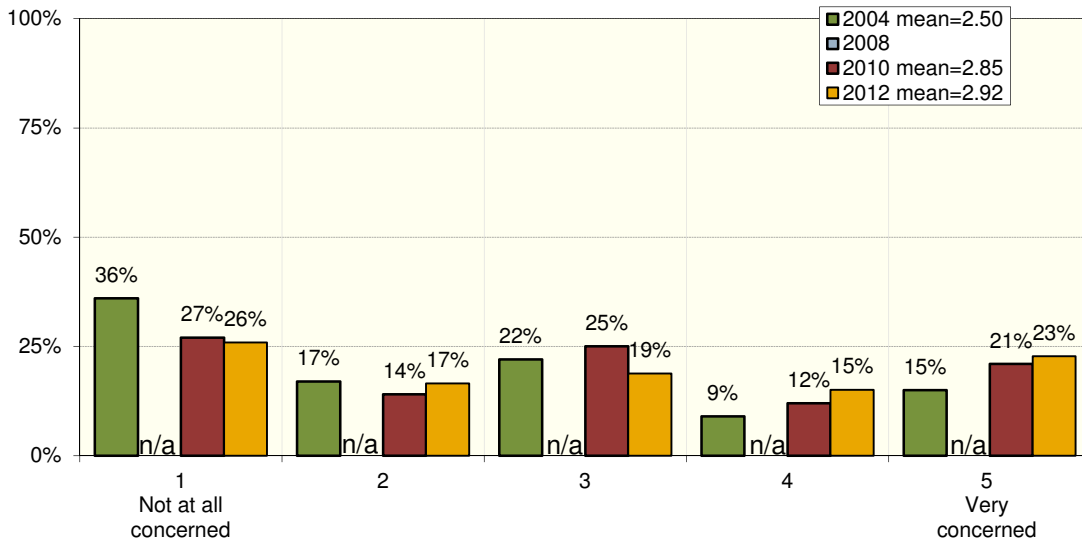
- ✓ Those who are 65 years old and older; those whose political ideology is very conservative; and those with an "other" marital status (not married or single) are more likely to say they are very concerned about energy issues.

(cont.) How concerned are you about these issues?

**Question 16: State government spending<sup>8</sup>**



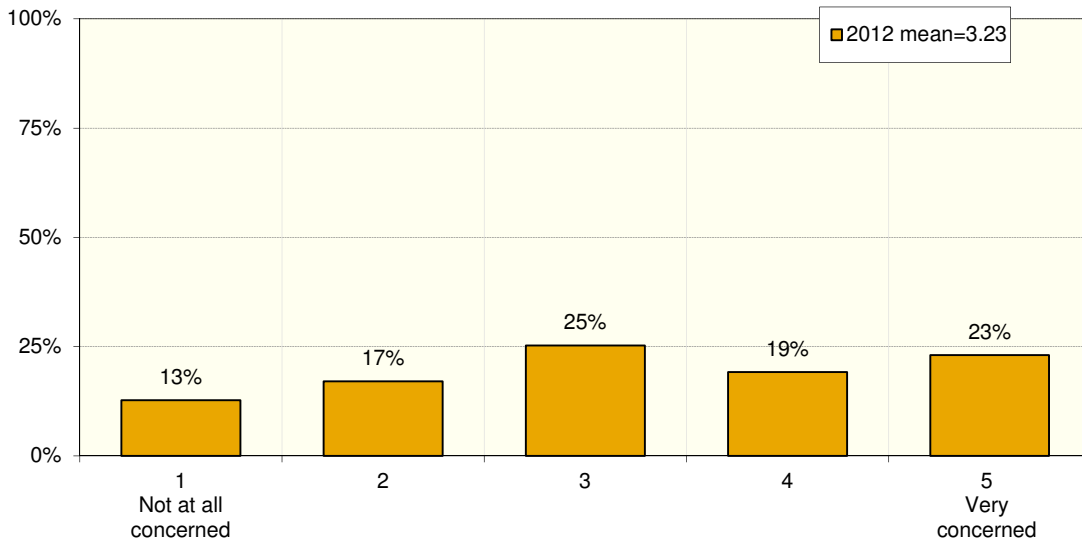
**Question 17: Gay rights**



<sup>8</sup> 2008-2010: "Government spending"

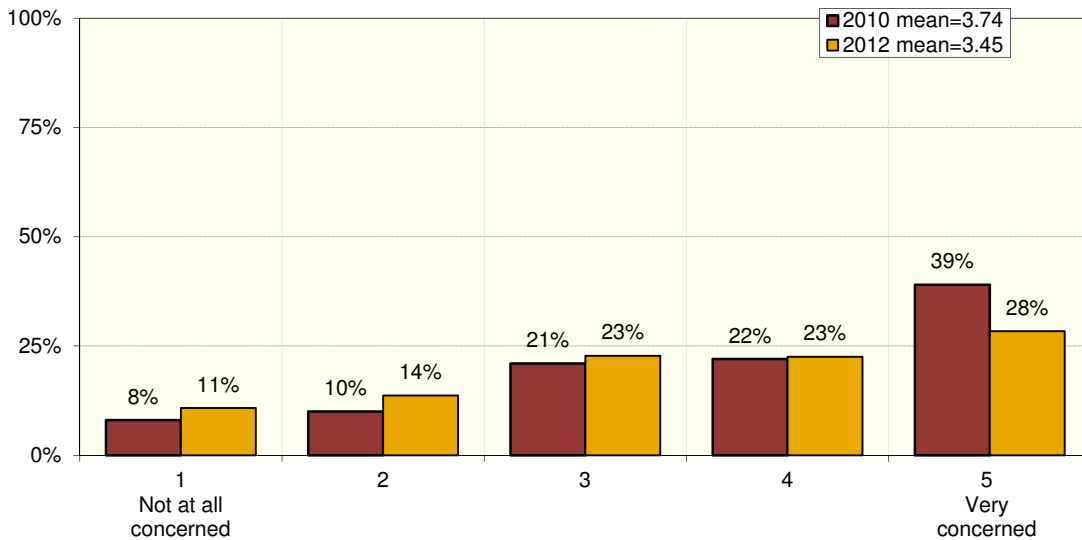
(cont.) How concerned are you about these issues?

**Question 18: Access to public lands**



- ✓ Residents living outside the Wasatch Front are more likely to say they are very concerned about access to public lands.

**Question 19: States' rights<sup>9</sup>**

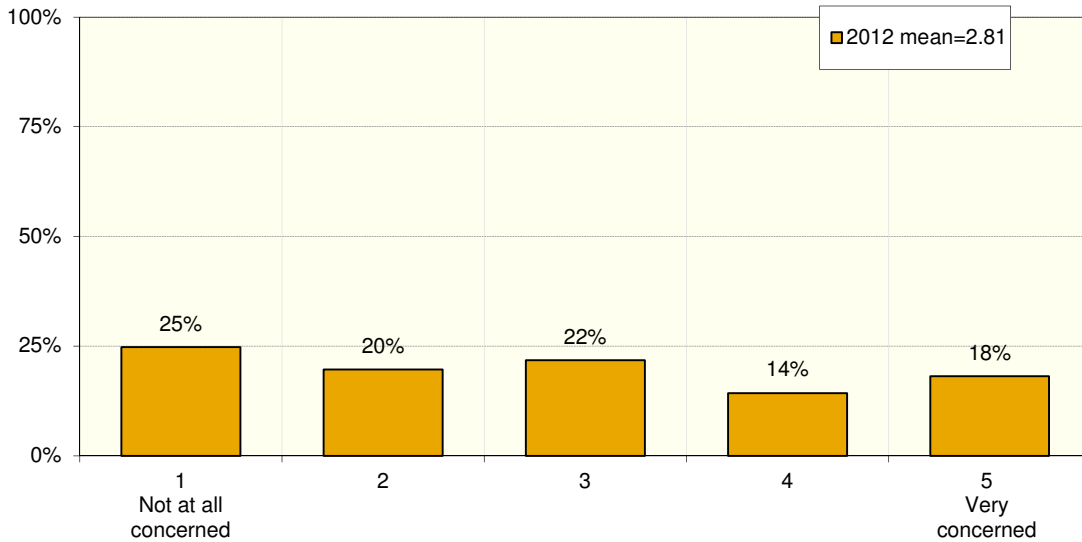


- ✓ Those whose political ideology is very conservative are more likely to say they are very concerned about states' rights versus the federal government.
- ✓ Those whose political ideology is liberal (likelihood increases as resident is more liberal) are more likely to say they are *not concerned* (rating of 1 or 2) about states' rights versus the federal government.

<sup>9</sup> 2010: "States' rights versus the federal government"

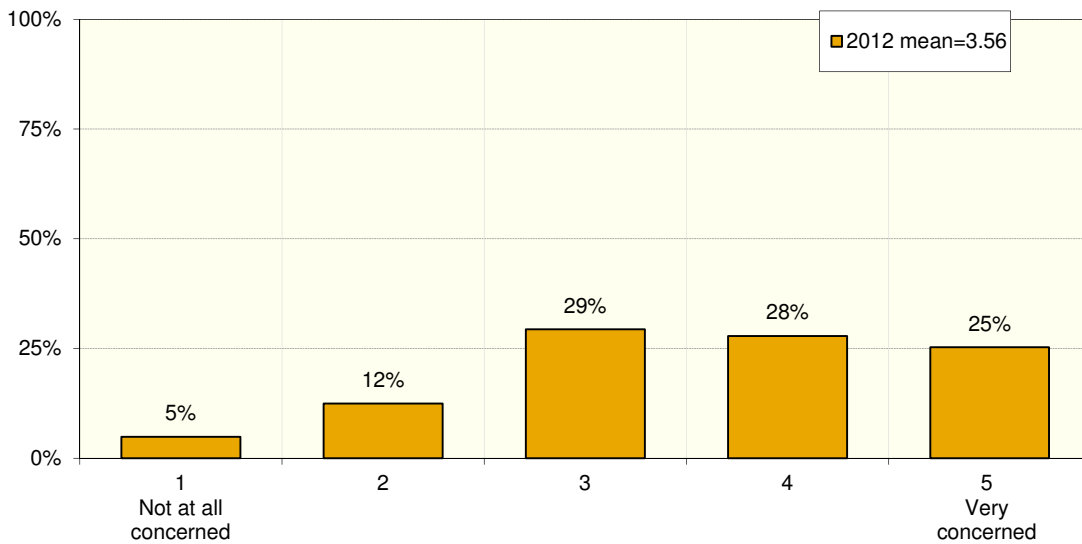
(cont.) How concerned are you about these issues?

**Question 20: Liquor laws**



- ✓ Those whose political ideology is liberal (likelihood increases as resident is more liberal); and those who have no religious affiliation are more likely to say they are very concerned about the ethics of elected officials.

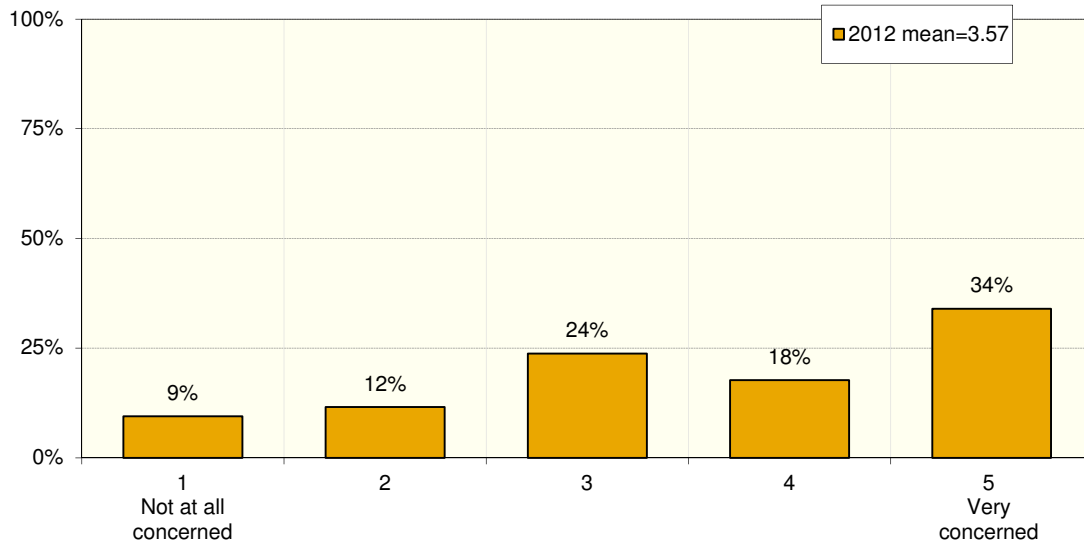
**Question 21: Poverty**



- ✓ Democrats; those whose religious preference is “other” (not Catholic, Protestant, or LDS); and those with an “other” marital status (not married or single) are more likely to say they are very concerned about poverty.

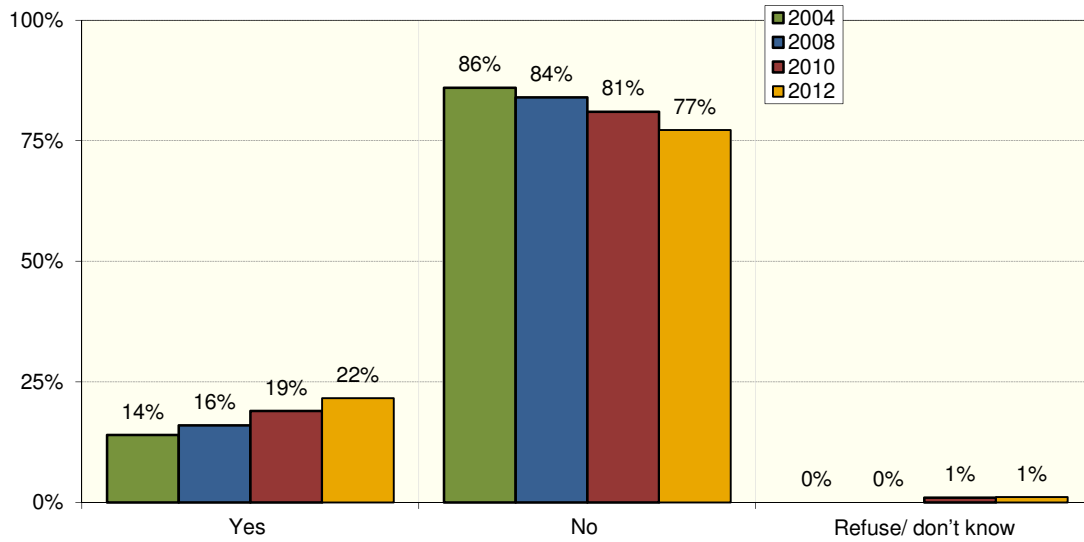
(cont.) How concerned are you about these issues?

**Question 22: Partisan politics**



- ✓ Older residents (likelihood increases as age increases); post-college graduates; Democrats; those whose political ideology is liberal; those whose preference is “other” (not Catholic, Protestant, or LDS); those with an “other” marital status (not married or single); and residents from Davis, Salt Lake and Weber County are more likely to say they are very concerned about partisan politics.
- ✓ Younger residents (likelihood increases as age decreases) are more likely to say they are *not at all concerned* about partisan politics.

**Question 23: Can you think of any other important issues that I didn't mention?**



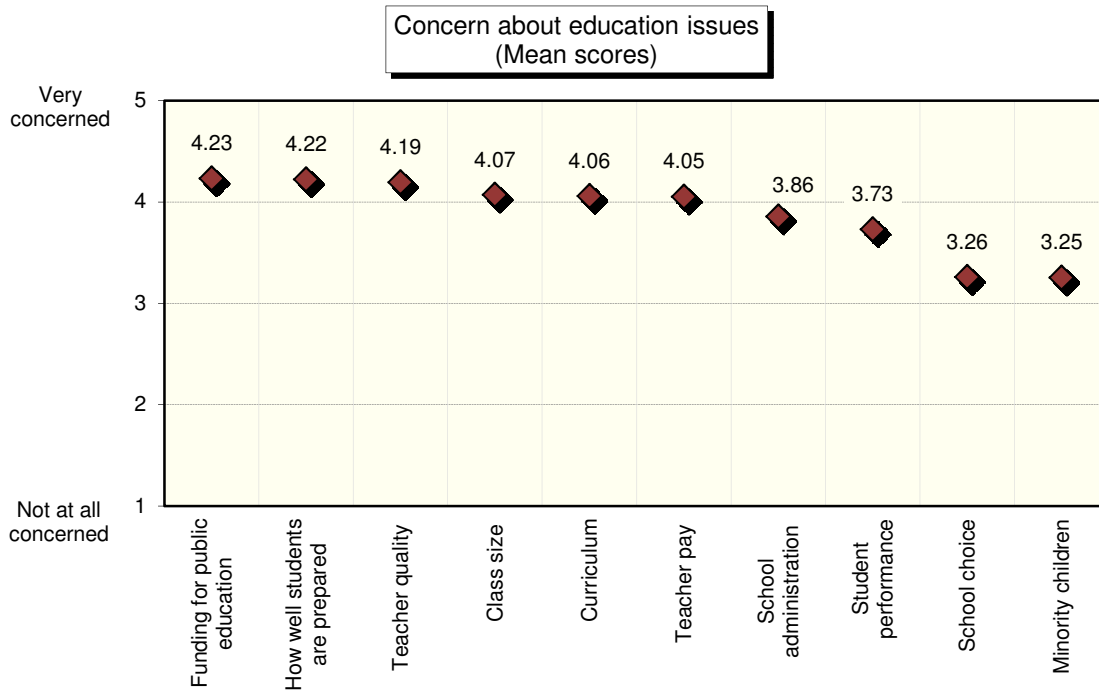
**Question 24: [IF YES] What? (FIRST RESPONSE; TOP RESPONSES SHOWN)**

	2004 n=83	2008 n=104	2010 n=112	2012 n=174
Miscellaneous government issues	10%	14%	21%	20%
Miscellaneous social issues	12%	10%	8%	13%
Health insurance/ healthcare	0%	4%	3%	9%
School/ education issues	10%	13%	20%	6%
Church & state issues	5%	1%	2%	6%
State employee comments	4%	0%	4%	5%
Taxes/ tax structure	6%	2%	3%	5%
Concern for resources	--	--	2%	5%
Wilderness/ open space/ land issue	5%	4%	3%	3%
Jobs/ wages	2%	3%	1%	3%

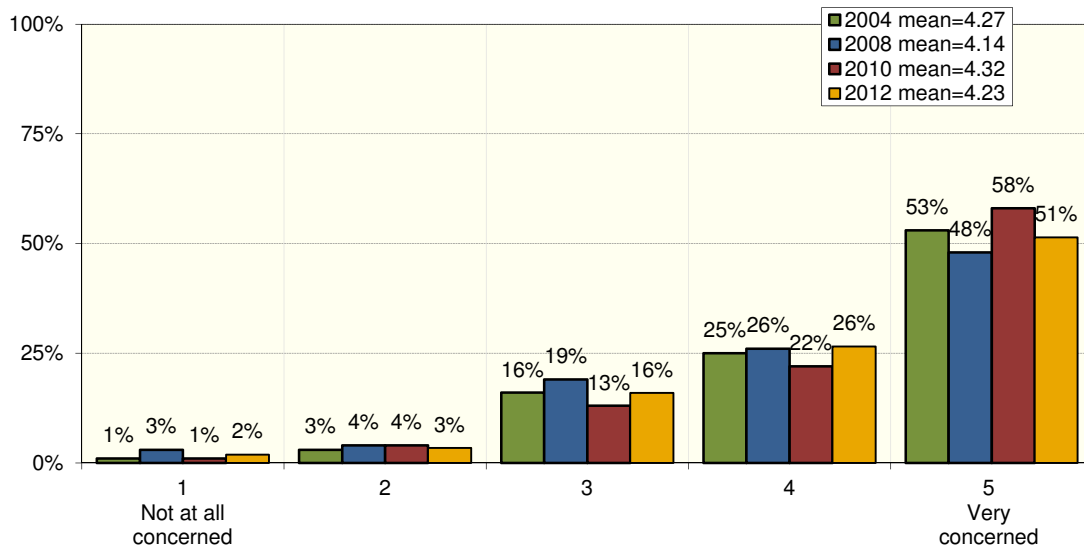
# EDUCATION

Number responding, unless otherwise specified      **2004**      **2008**      **2010**      **2012**  
 567      524      528      749

**Questions 25-35: I'd like to ask about some specific issues relating to kindergarten through 12th grade education in Utah. Please use a 1-5 scale where one means you are "not at all concerned" about the issue, and five means you are "very concerned" about it.**

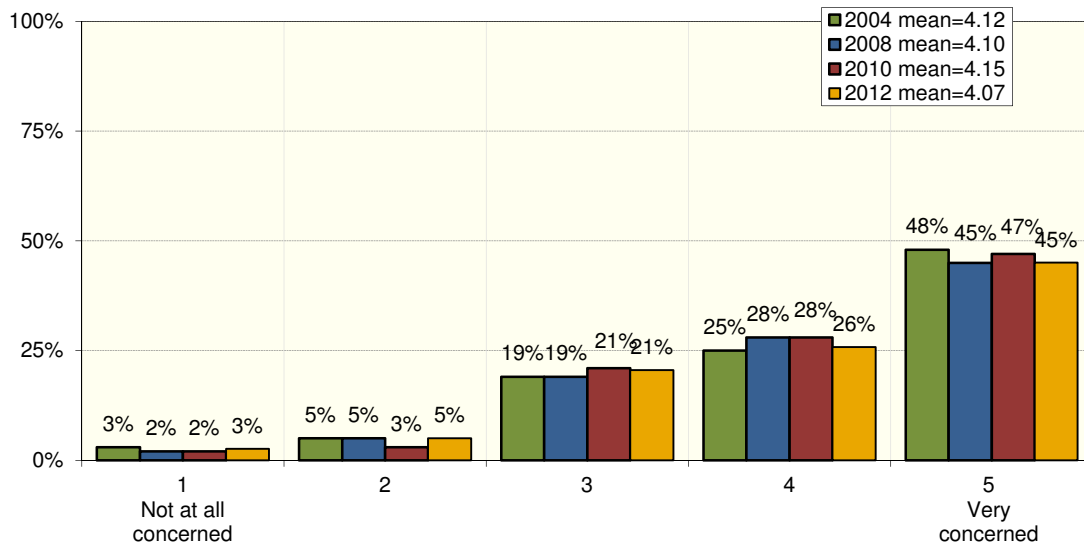


**Question 25: [How concerned are you about...?] Funding for public education**



✓ Females; those whose educational attainment is some college/technical, post-college graduate; Democrats; independent voters; are more likely to say they are very concerned about funding for public education.

**Question 26: Class size**

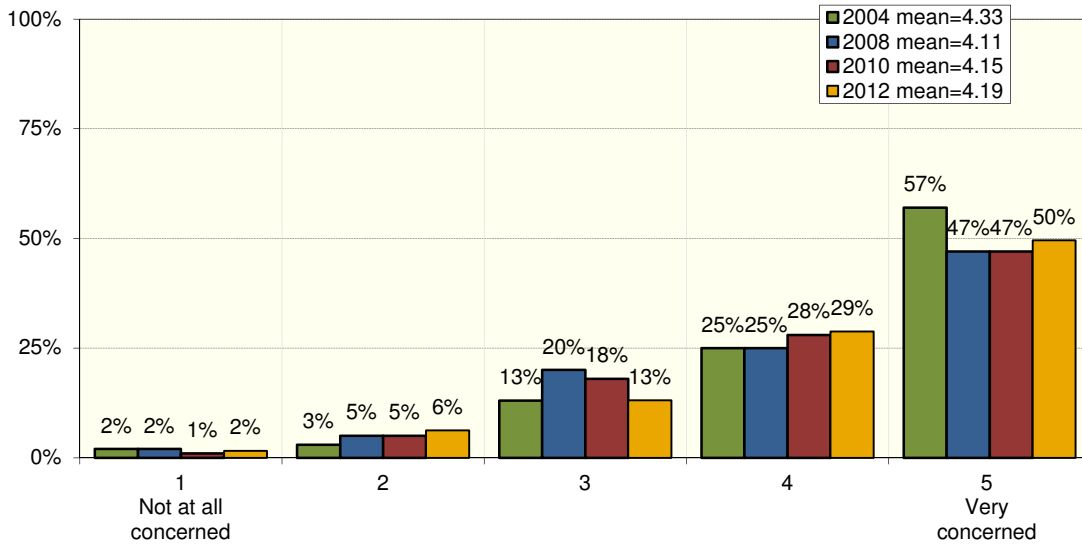


✓ Females are more likely to say they are very concerned about class size.



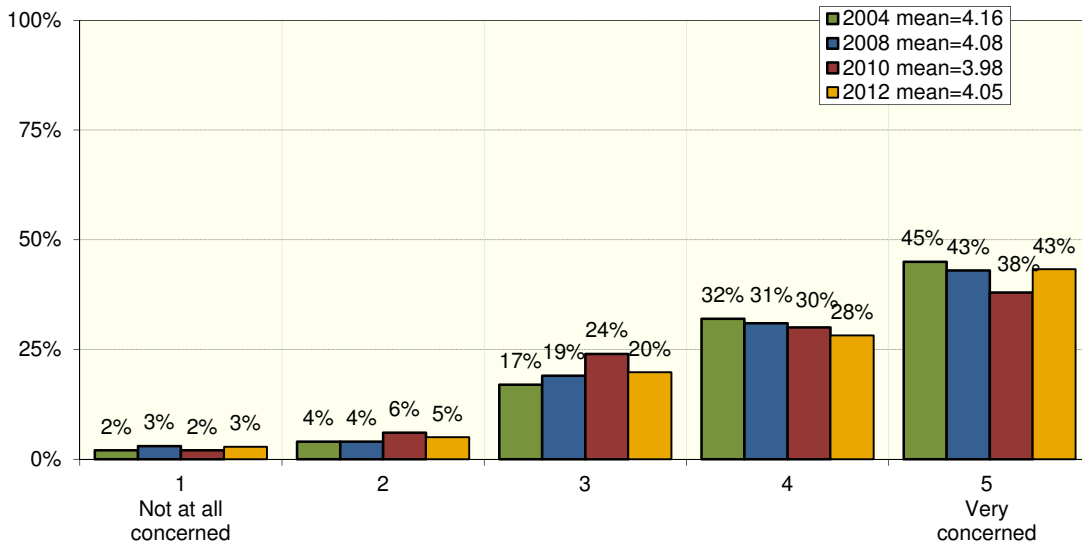
(cont.) How concerned are you about these education issues?

**Question 27: Teacher quality**



- ✓ Those whose educational attainment is high school graduate or some college/technical school; those who are self-employed or employed part-time; and homemakers are more likely to say they are very concerned about teacher quality.

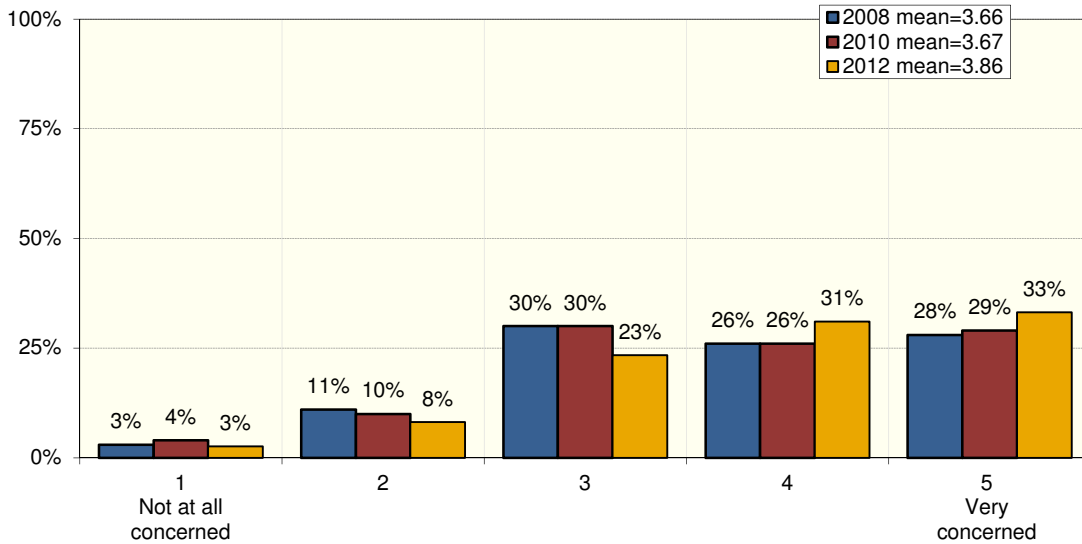
**Question 28: Teacher pay**



- ✓ Female residents; individuals whose political ideology is liberal or moderate; and those with an "other" marital status (not married or single) are more likely to say they are very concerned about teacher pay.

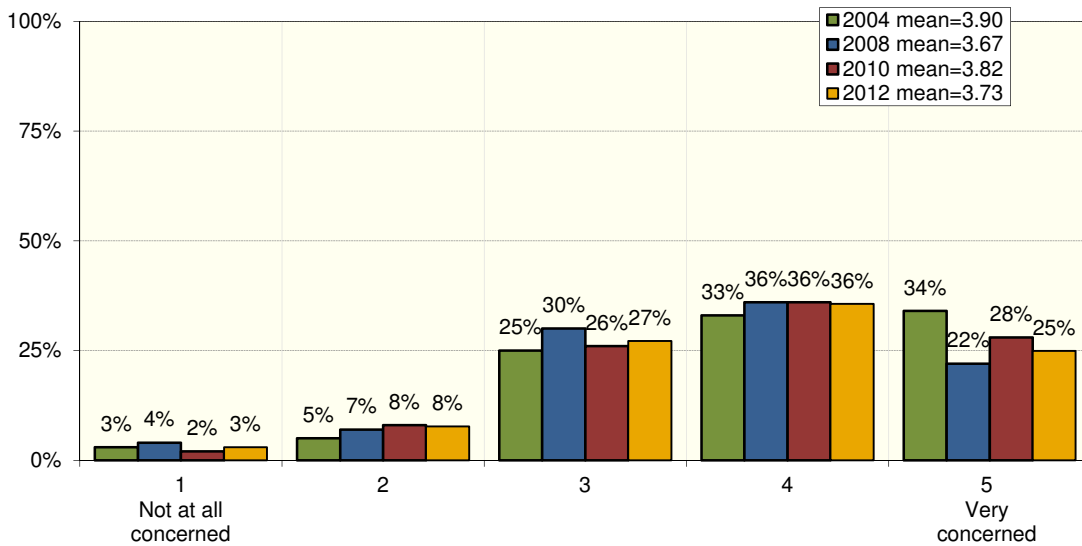
(cont.) How concerned are you about these education issues?

**Question 29: School administration quality<sup>10</sup>**



✓ Residents whose educational attainment is some college/ technical school or high school graduate are more likely to say they are very concerned about school administration.

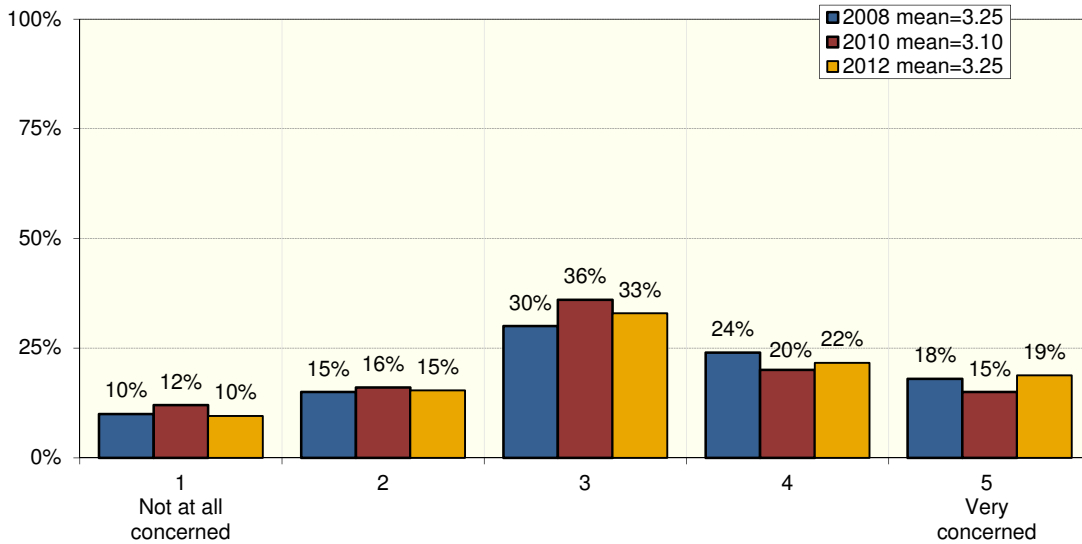
**Question 30: Student performance or test scores**



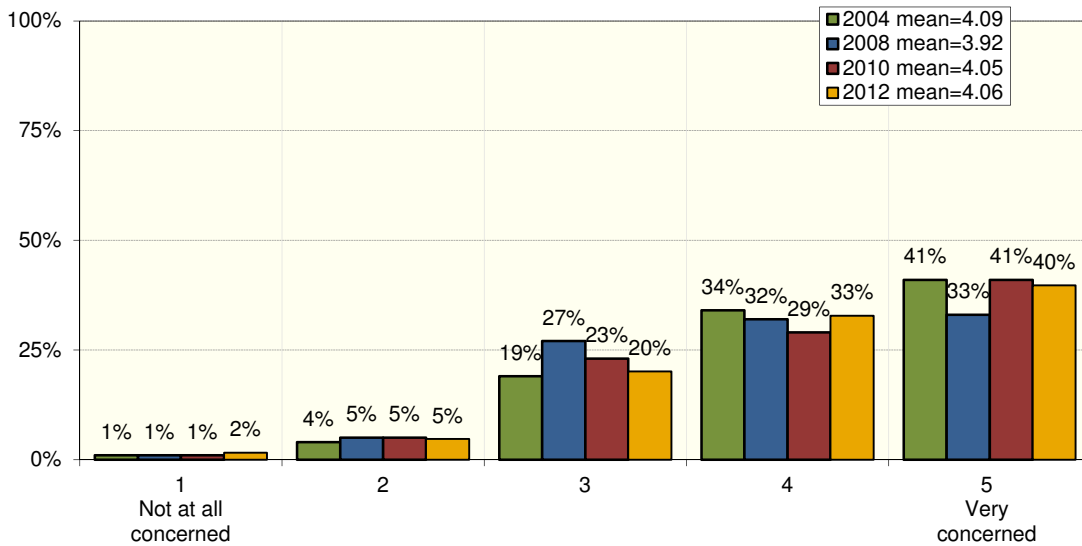
<sup>10</sup> 2008-2010: "School administration"

(cont.) How concerned are you about these education issues?

**Question 31: Opportunities for minority children**



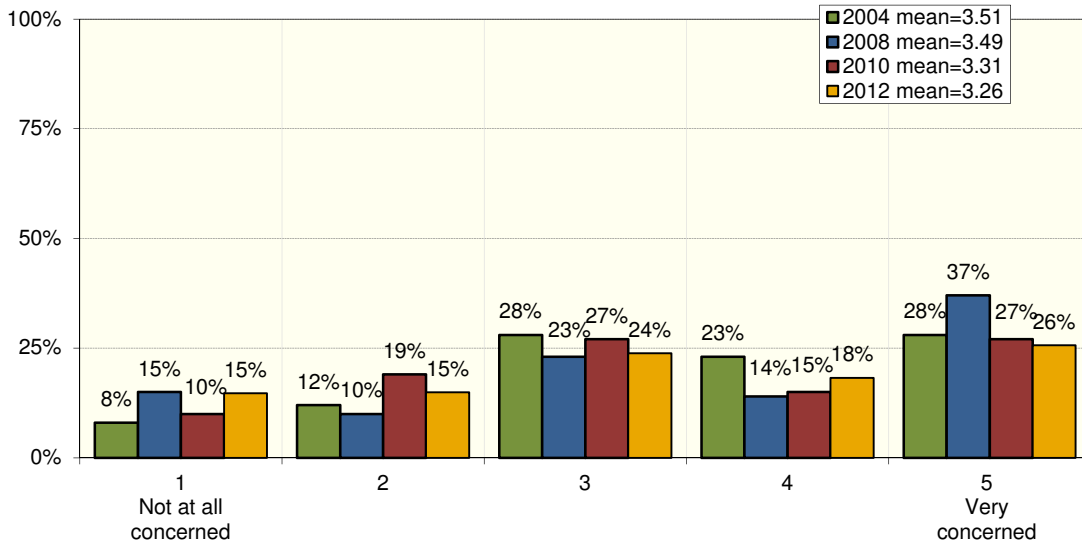
**Question 32: Curriculum - what students are learning**



- ✓ Independent voters; those who are not active in their preferred religion are more likely to say they are very concerned about curriculum.
- ✓ Residents who list themselves as “other” politically (not Republican, Democrat, or independent) are more likely to say they are *concerned* (rating of 4) about curriculum.

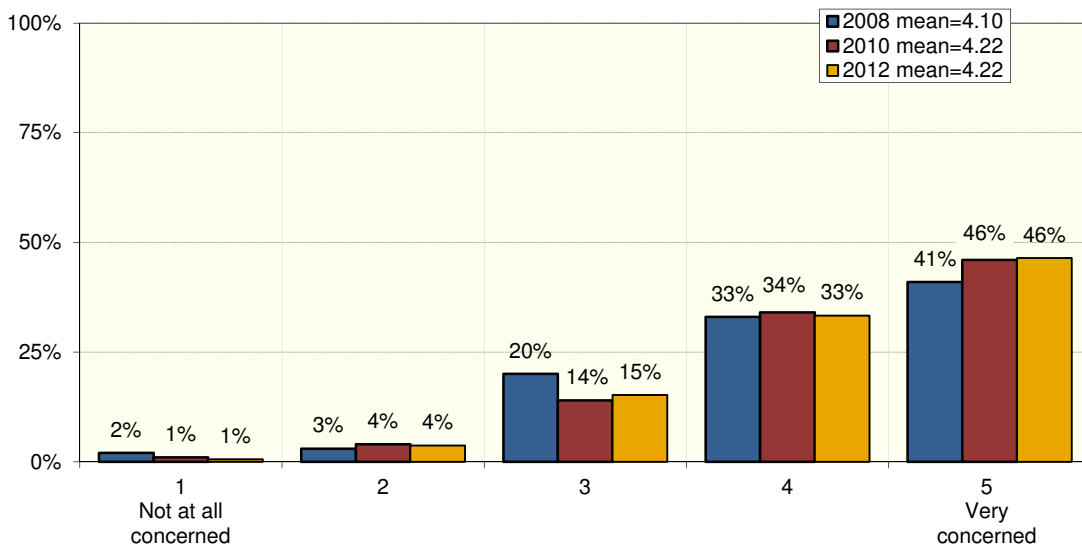
(cont.) How concerned are you about these education issues?

**Question 33: The option of school choice or vouchers<sup>11</sup>**



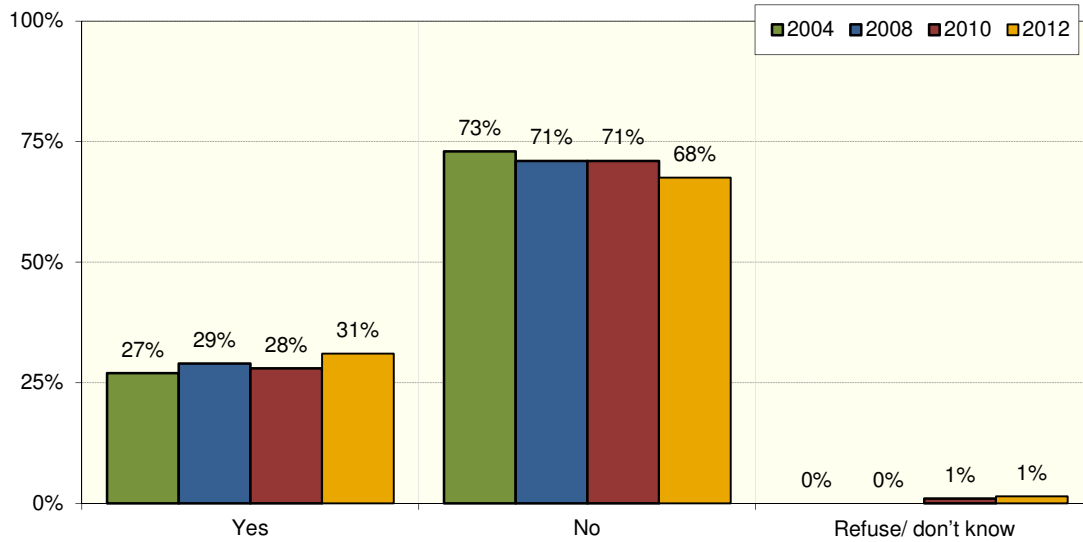
- ✓ Those who are 55-64 years old are more likely to say they are very concerned about school choice.
- ✓ Those whose political ideology is liberal (likelihood increases as resident is more liberal) are more likely to say they are *not at all concerned* about school choice.

**Question 34: How well students are prepared for college or careers**



<sup>11</sup> 2008 & 2010: "School choice or vouchers"; 2004: "Tuition tax credit and school choice"

**Question 35: Are there any other issues with public education in Utah that you are concerned about?**



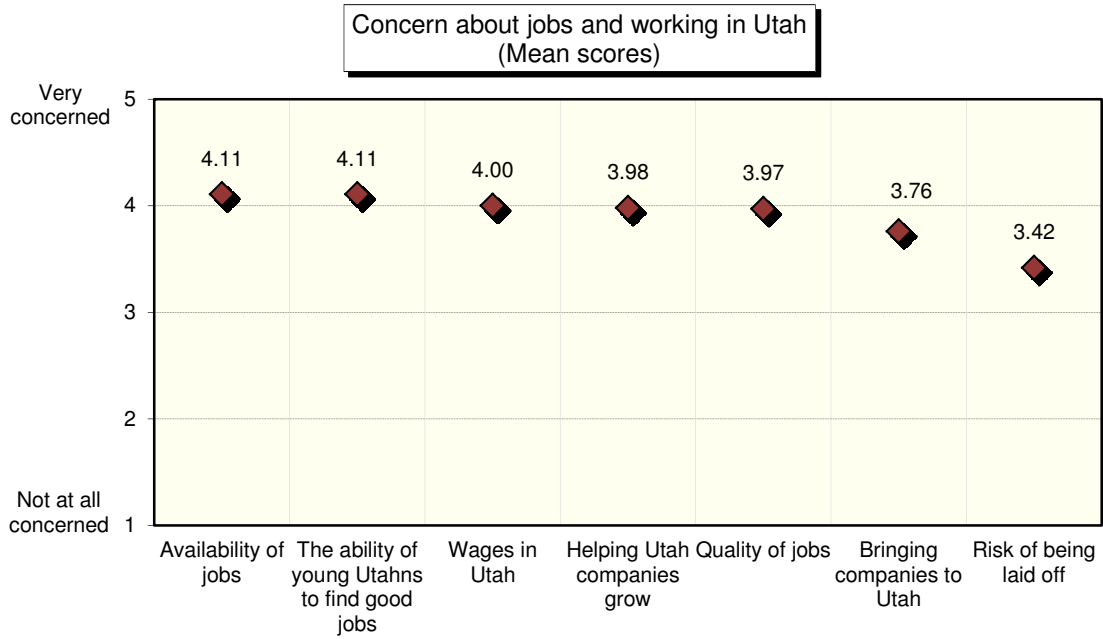
**Question 36: [IF YES] What? (FIRST RESPONSE; TOP RESPONSES SHOWN)**

	2004 n=151	2008 n=154	2010 n=148	2012 n=232
Curriculum issues	8%	12%	10%	16%
Quality teachers/ accountability	6%	4%	3%	9%
Legislative comments	--	--	5%	8%
Miscellaneous funding comments	--	--	6%	6%
Safety in schools/ bullying	5%	2%	1%	6%
Miscellaneous	28%	17%	8%	4%
Charter schools	1%	2%	5%	4%
Administration comments	5%	4%	2%	4%
Kids learning/ literacy	4%	2%	2%	4%
Funding/ spending funds	7%	11%	--	3%

# JOBS

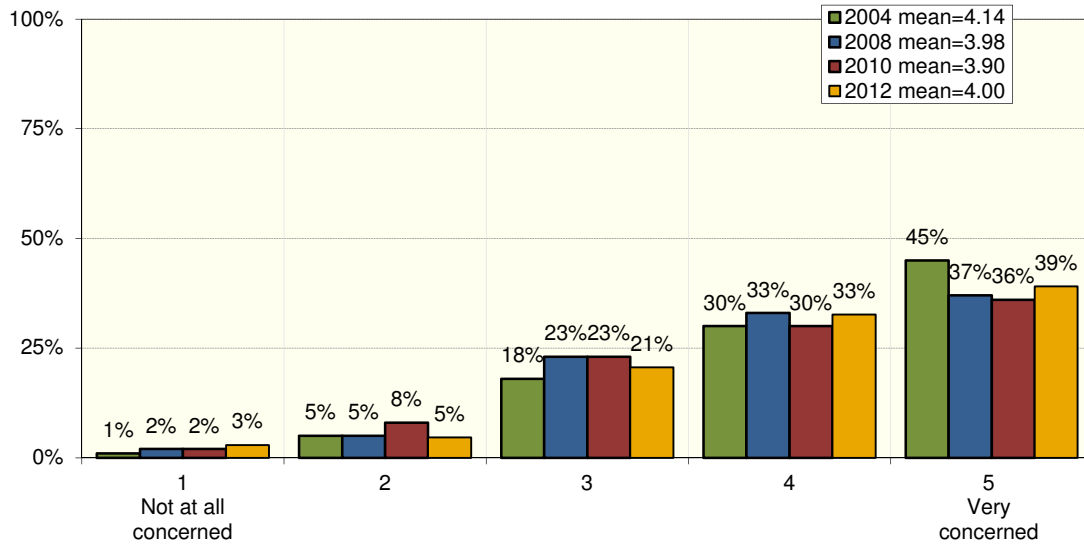
	2004	2008	2010	2012
Number responding, unless otherwise specified	564	511	577	753

**Questions 37-43: The next few questions deal with working in Utah. Using the same 1-5 scale, how concerned are you with...? (REPEAT SCALE AS NEEDED)**



(cont.) How concerned are you about...?

**Question 37: [How concerned are you about...?] Wages and salaries<sup>12</sup>**

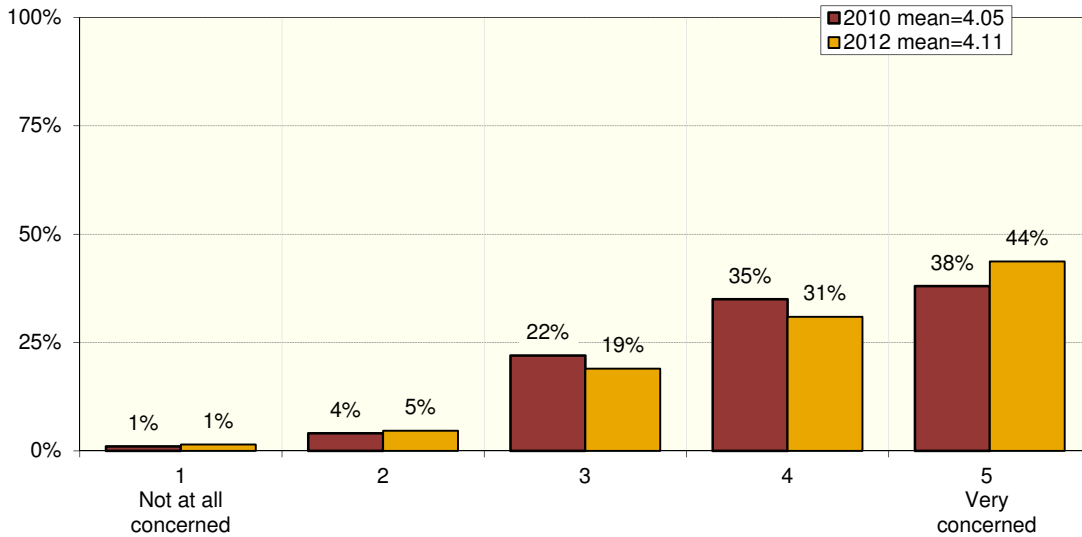


- ✓ Those whose educational attainment is some college/technical school or high school graduate; those who have lived in Utah for 6-10 years; and those with an “other” marital status (not married or single) are more likely to say they are very concerned about wages and salaries in Utah.

<sup>12</sup> 2004-2010: “Wages in Utah”

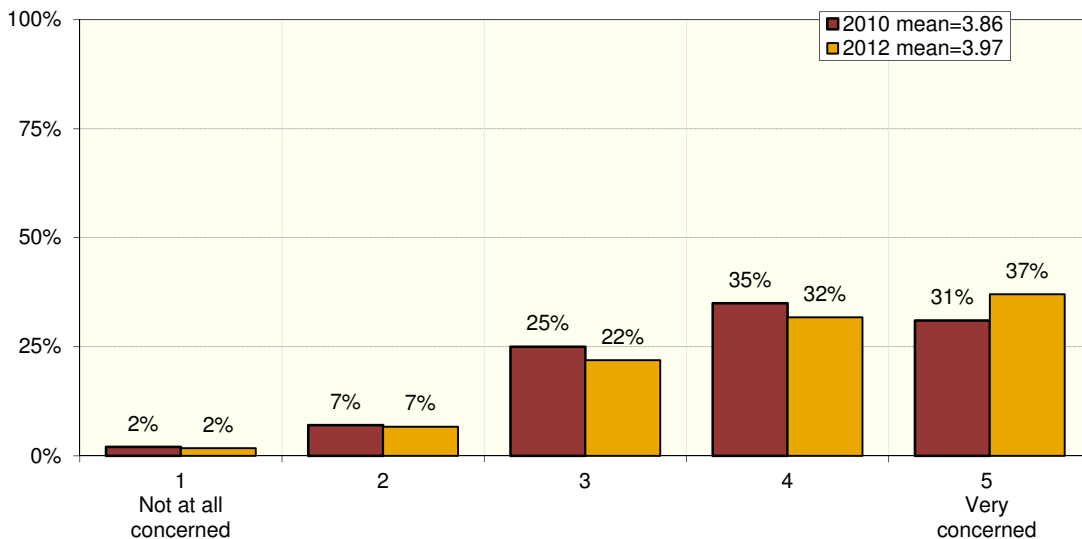
(cont.) How concerned are you about...?

**Question 38: Availability of jobs<sup>13</sup>**



- ✓ Those aged 45-64; residents whose educational attainment is high school graduate or some college/technical school; those who are not active in their preferred religion; and those who don't have children under the age of 18 living at home are more likely to say they are very concerned about the availability of jobs in Utah.

**Question 39: Quality of jobs available<sup>14</sup>**



- ✓ Those aged 35-64; and those whose educational attainment is high school graduate or some college/technical school are more likely to say they are very concerned about the quality of jobs available in Utah.

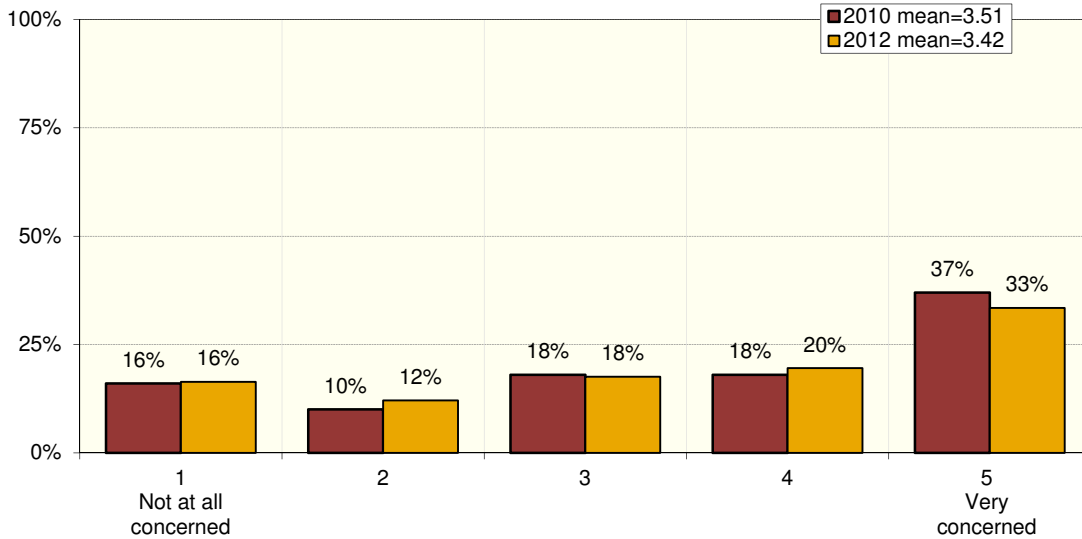
<sup>13</sup> 2010: "Availability of jobs in Utah"

<sup>14</sup> 2010: "Quality of jobs available in Utah"



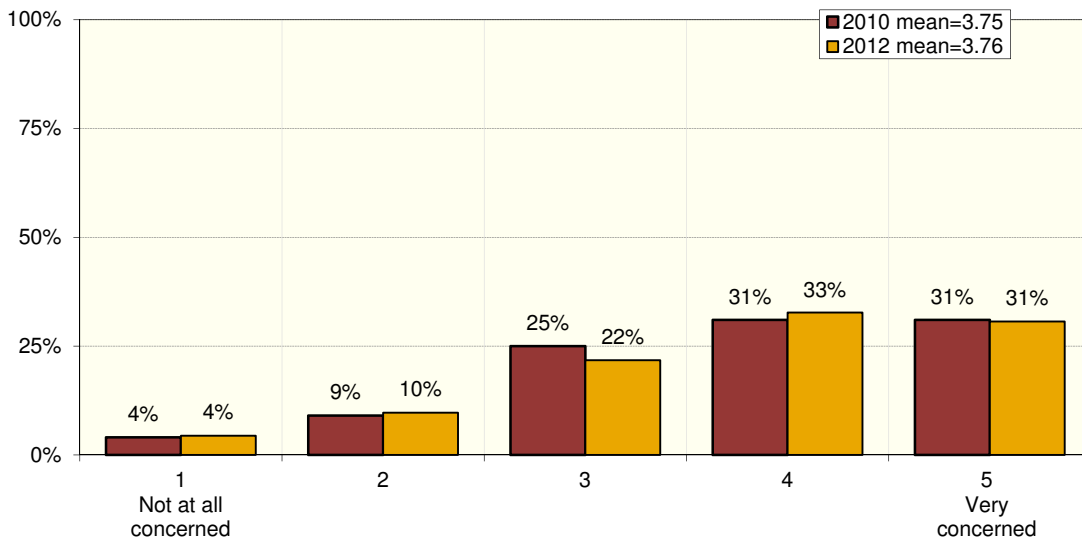
(cont.) How concerned are you about...?

**Question 40: Risk of being laid off or losing your job**



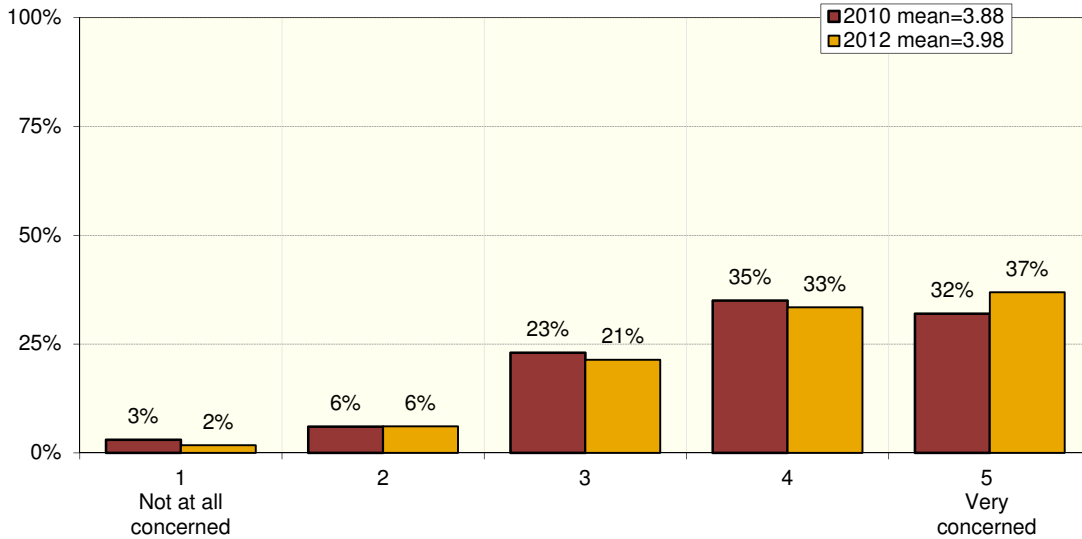
- ✓ Residents who are 55-64 years old; those whose educational attainment is high school graduate or some college/technical school; those who are unemployed; and those whose annual family income is \$39,000 or less (likelihood increases as income decreases) are more likely to say they are very concerned about the risk of being laid off.
- ✓ Those with higher educational attainment (likelihood increases as educational attainment increases); are more likely to say they are *not at all concerned* about the risk of being laid off.

**Question 41: Bringing companies to Utah from out of state**



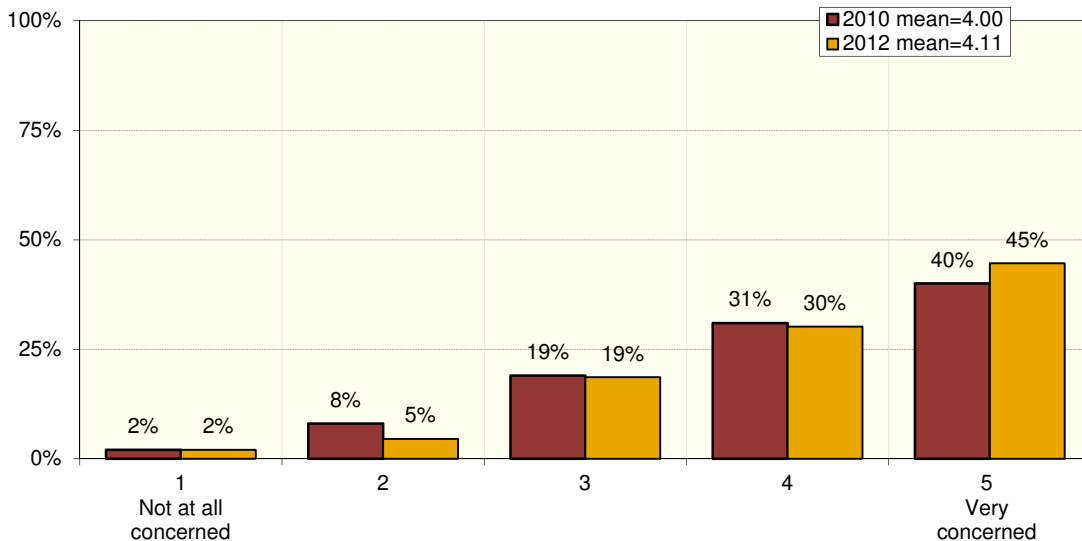
(cont.) How concerned are you about...?

**Question 42: Helping Utah companies grow in the state**



- ✓ Residents who are 45-54 years old; those whose educational attainment is some college/technical school or less; Republicans and independent voters; those whose political ideology is very conservative; those who are not active in their preferred religion; and those with an “other” marital status (not married or single) are more likely to say they are very concerned about helping Utah companies grow in the state.

**Question 43: The ability of young Utahns to find good jobs in Utah**

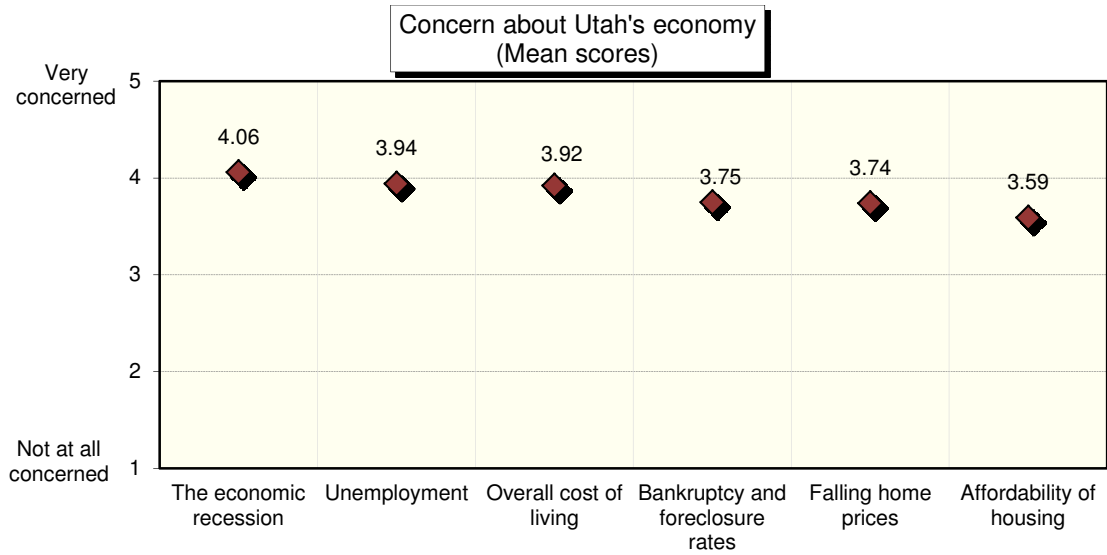


- ✓ Females; those 45-65+ years old; those who have lived in Utah for more than 20 years; those with an “other” marital status (not married or single); those who don’t have children under the age of 18 living at home; and those who are employed part-time, retired and unemployed are more likely to say they are very concerned about the ability of young Utahns to find good jobs in Utah.

## ECONOMY

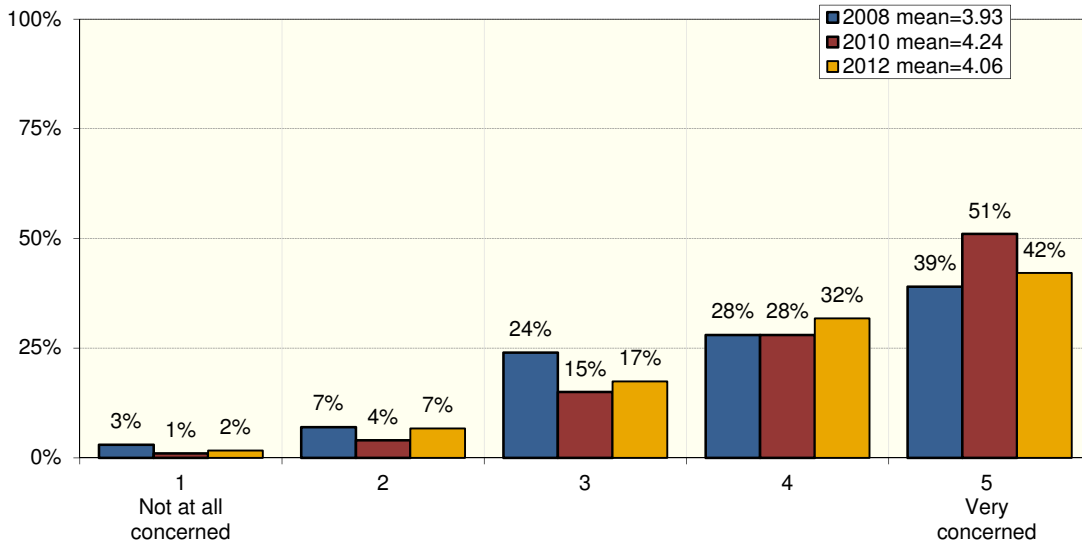
Number responding, unless otherwise specified      **2004**      **2008**      **2010**      **2012**  
 564      511      577      781

**Questions 46-51: The next few questions deal with Utah's economy. Using the same 1-5 scale, how concerned are you with...? (n=781)**



(cont.) How concerned are you about...?

**Question 46: Recovery from the economic recession**<sup>15</sup>

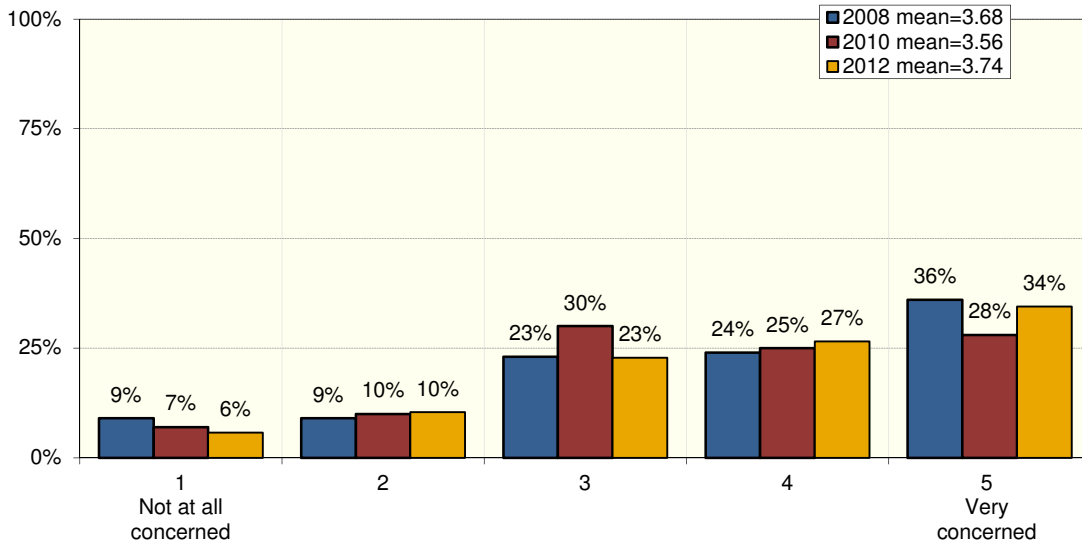


- ✓ Those who have lived in Utah for more than 20 years; those whose political ideology is conservative (likelihood increases as residents are more conservative); those with an “other” marital status (not married or single); and those who do not have children under the age of 18 living at home are more likely to say they are very concerned about the economic recession.

<sup>15</sup> 2010: “The economic recession”; 2008: “Potential recession”

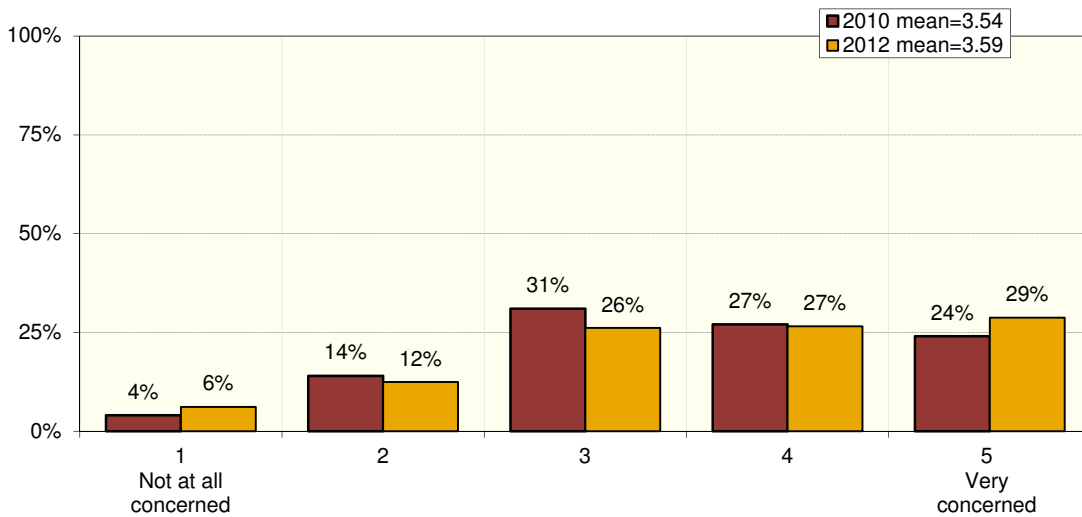
(cont.) How concerned are you about...?

**Question 47: Falling home prices<sup>16</sup>**



- ✓ Residents 65 years old or older; those who have lived in Utah for 2-5 years; and those with an “other” marital status (not married or single) are more likely to say they are very concerned about falling home prices.

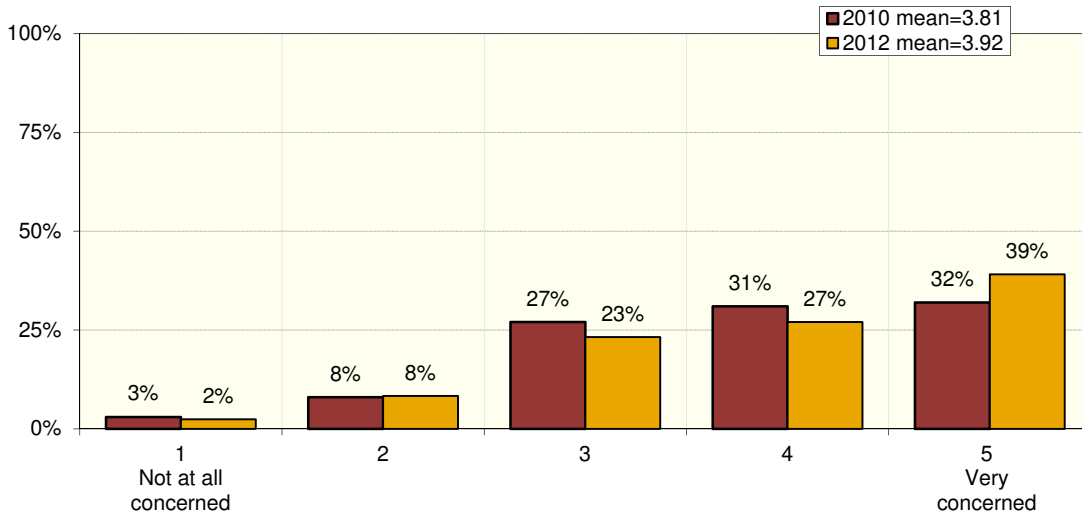
**Question 48: Affordability of housing**



<sup>16</sup> 2008: “Declining home values”

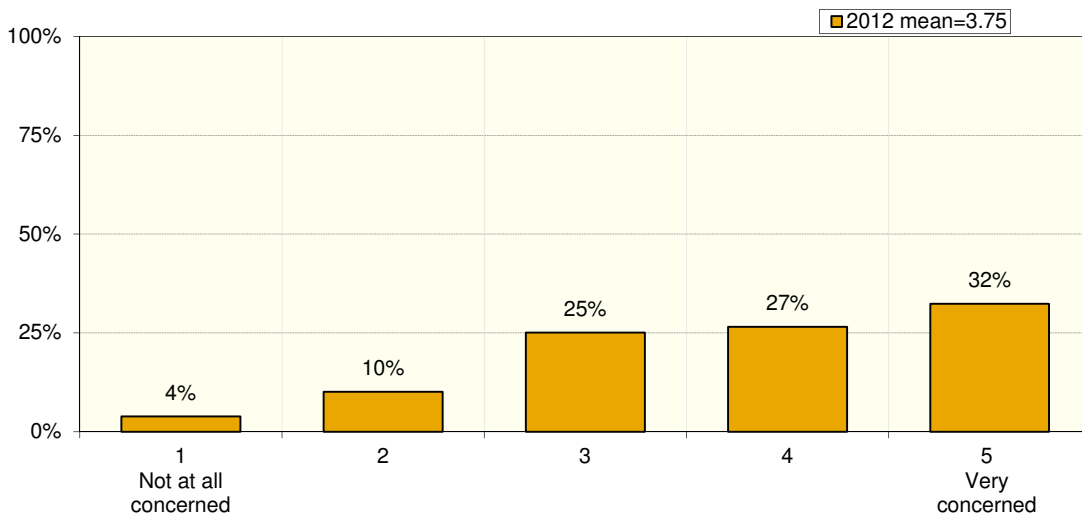
(cont.) How concerned are you about...?

**Question 49: Overall cost of living**



- ✓ Females; those who are 65 years old or older; those who've lived in Utah for more than 20 years; those who's religious preference is "other" (not Catholic, Protestant, or LDS); those who are self-employed, retired or homemakers; and those whose annual family income is \$24,999 or less are more likely to say they are very concerned about the overall cost of living.

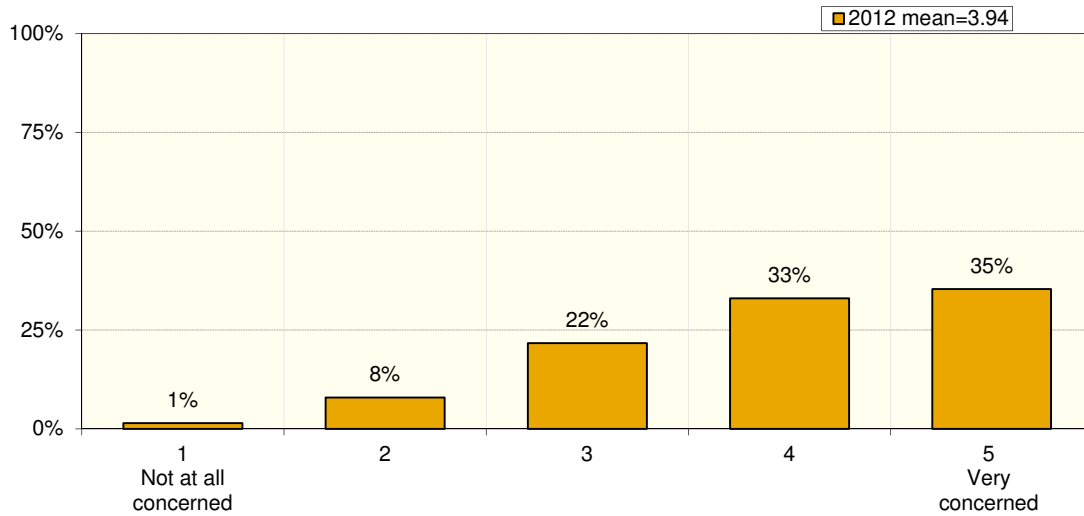
**Question 50: Utah's bankruptcy and foreclosure rates**



- ✓ Older residents (likelihood increases as age increases); and those with an "other" marital status (not married or single) are more likely to say they are very concerned about cutbacks in state and local government programs because of the economy.

(cont.) How concerned are you about...?

**Question 51: Unemployment**



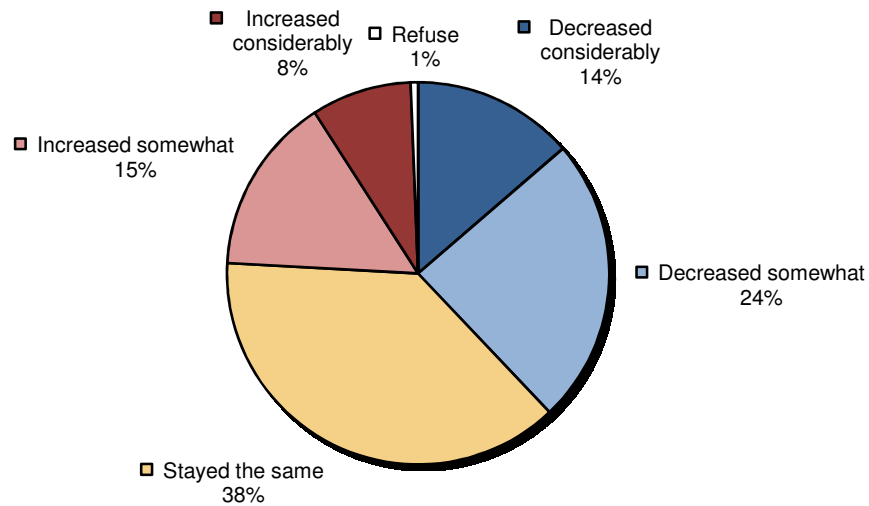
- ✓ Those who are 65 years old or older; those whose educational attainment is high school graduate or some college/technical school; and those who do not have children under the age of 18 living at home are more likely to say they are very concerned about cutbacks in state and local government programs because of the economy.

## PERSONAL FINANCES

### Thinking now about your personal finances...

	2004	2008	2010	2012
<i>Number responding, unless otherwise specified</i>	564	511	577	804

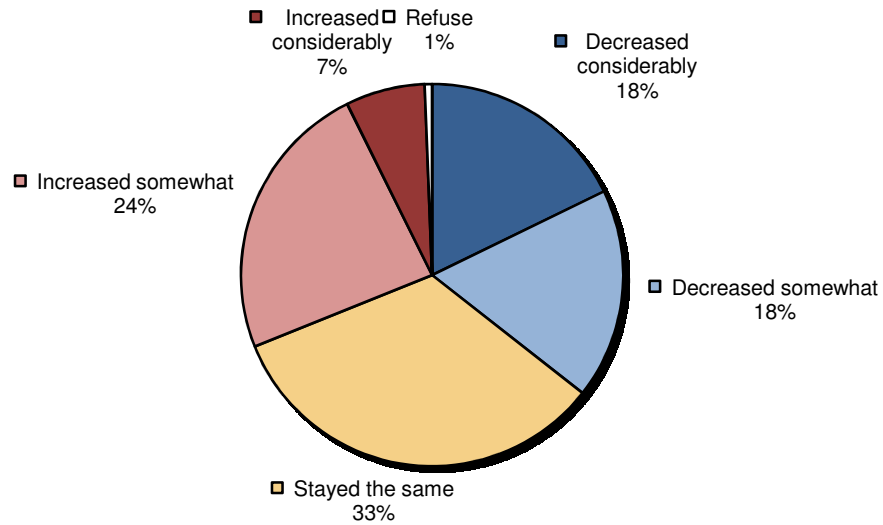
**Question 54: In the past two years, how has your level of personal debt changed? Would you say it has ...?**



- ✓ Residents who are single, or whose marital status is "other" (not married or single); those who do not have children under age 18 living in their home; those who are employed part-time or retired; those whose annual family income is between \$15,000 and \$24,999 are more likely to say that their level of personal debt has stayed the same.



**Question 55: And how has your level of personal savings changed? Would you say it has...?**



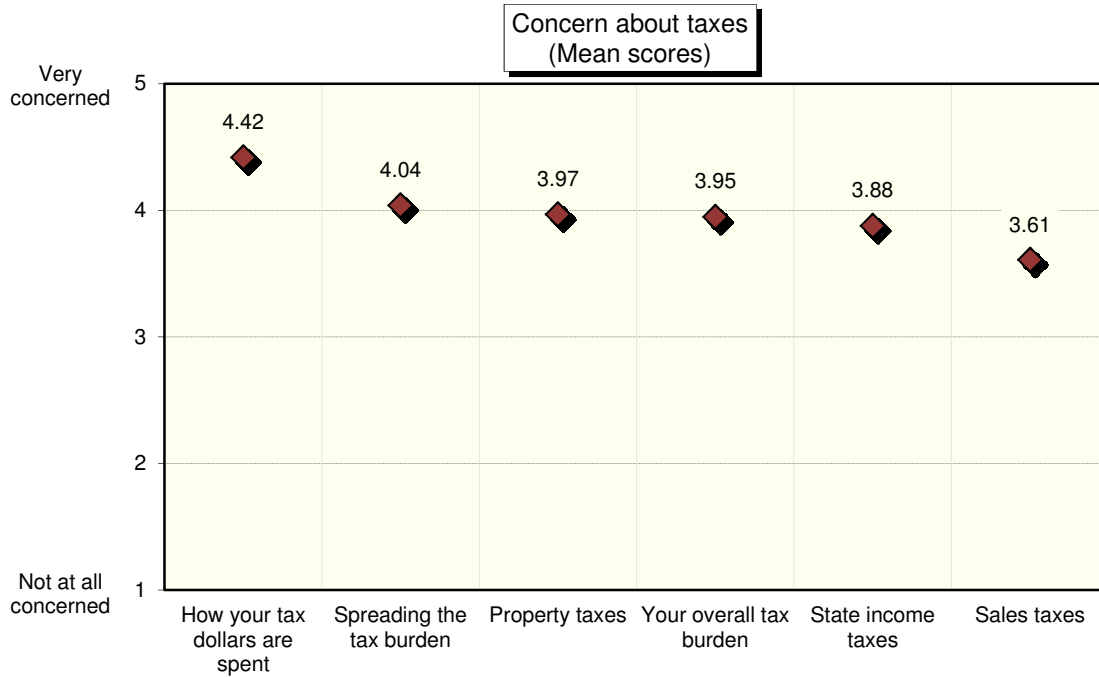
- ✓ Residents who are 65 years old or older; and those who are retired are more likely to say their level of personal savings has stayed the same.
- ✓ Residents who are unemployed; and those whose annual family income is under \$15,000 are more likely to say their level of personal savings has *decreased considerably*.

# TAXES

(ASKED OF ALL RESPONDENTS IN 2010; IF 3, 4, OR 5 ON "TAXES" IN 2008 AND 2004)

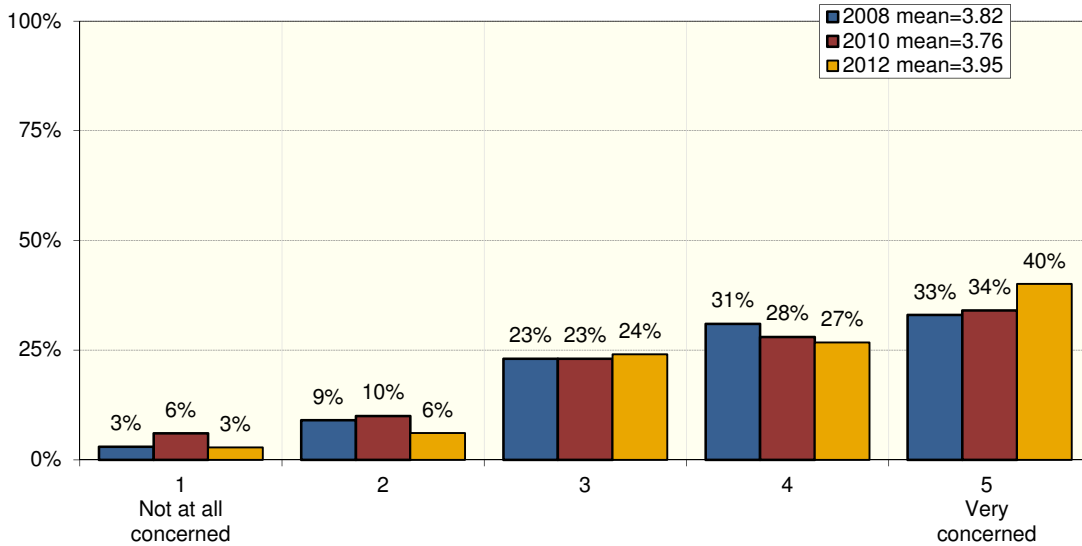
	2004	2008	2010	2012
Number responding, unless otherwise specified	527	551	604	674

**Questions 56-61: This time please rate how concerned you are about the following tax issues / taxes.**



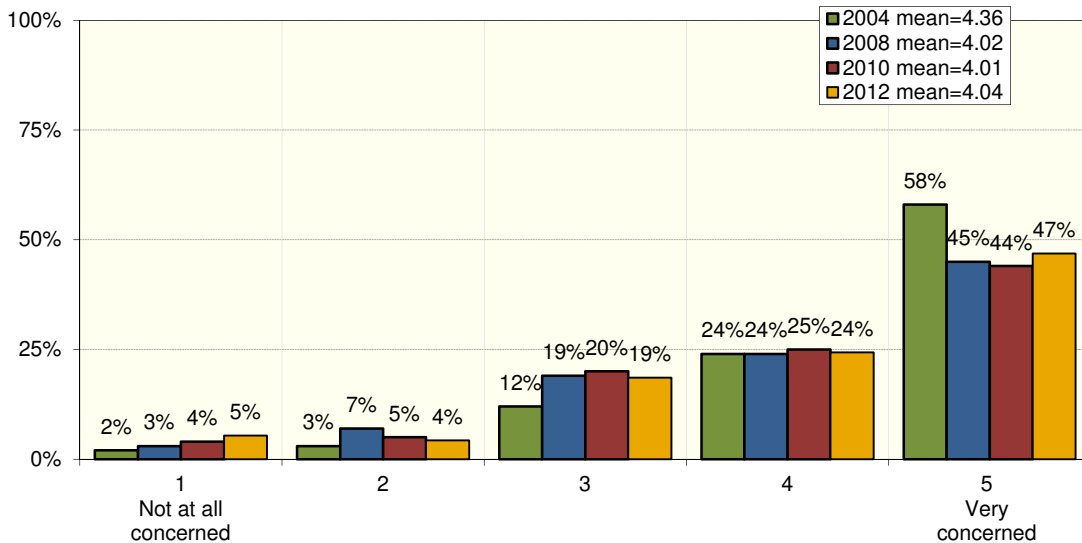
(cont.) How concerned are you about...?

**Question 56: [How concerned are you about...?] Your overall tax burden**



- ✓ Those who are 45-64 years old; Republicans; and those who are married or whose marital status is “other” (not married or single) are more likely to say they are very concerned about the overall tax burden.

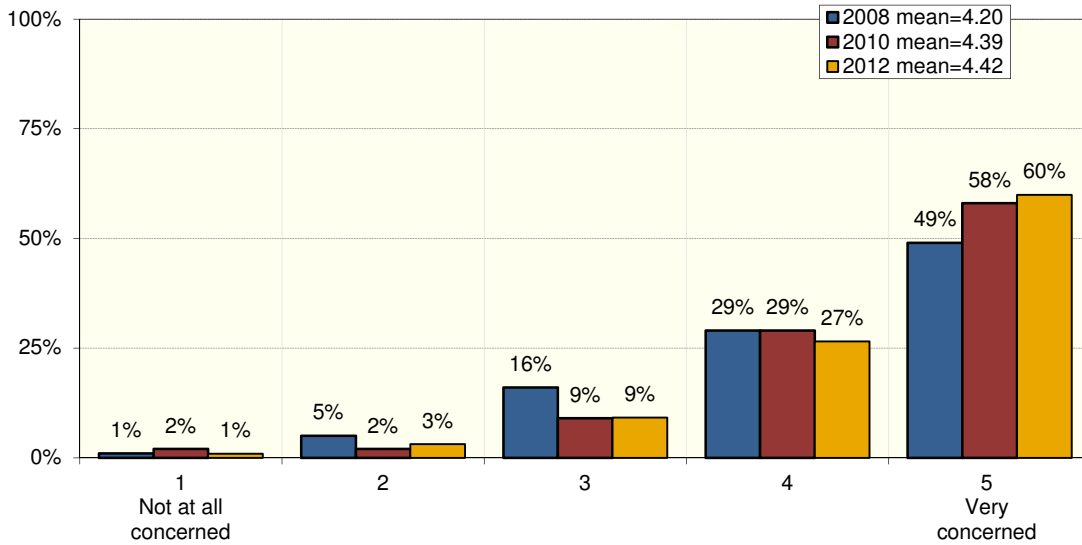
**Question 57: Spreading the tax burden fairly among Utahns**



- ✓ Females; those whose political ideology is liberal or moderate; those who have no children under the age of 18 living at home; and those living in Salt Lake County are more likely to say they are very concerned about spreading the tax burden fairly among Utahns.

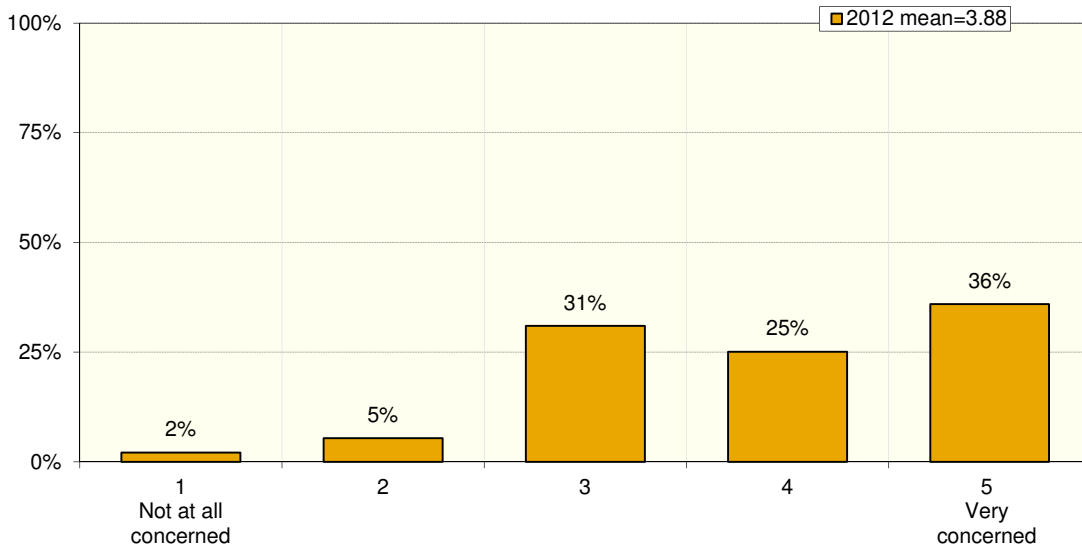
(cont.) How concerned are you about...?

**Question 58: How your tax dollars are spent**



- ✓ Residents whose religious preference is LDS, those who have no religious preference or whose preference is “other” (not Catholic, Protestant, or LDS); and those who are married or whose marital status is “other” (not married or single) are more likely to say they are very concerned about how their tax dollars are spent.

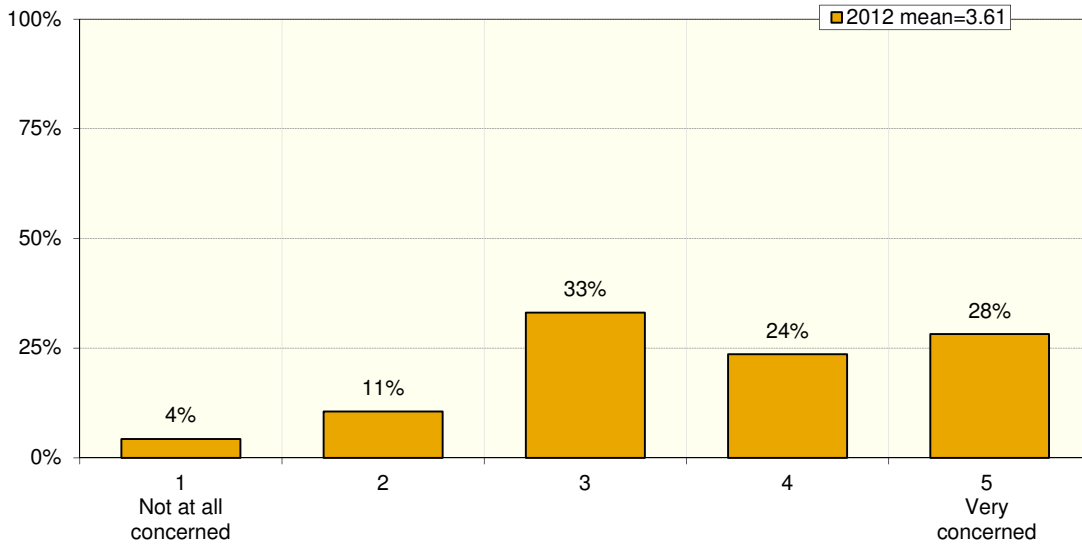
**Question 59: State income taxes**



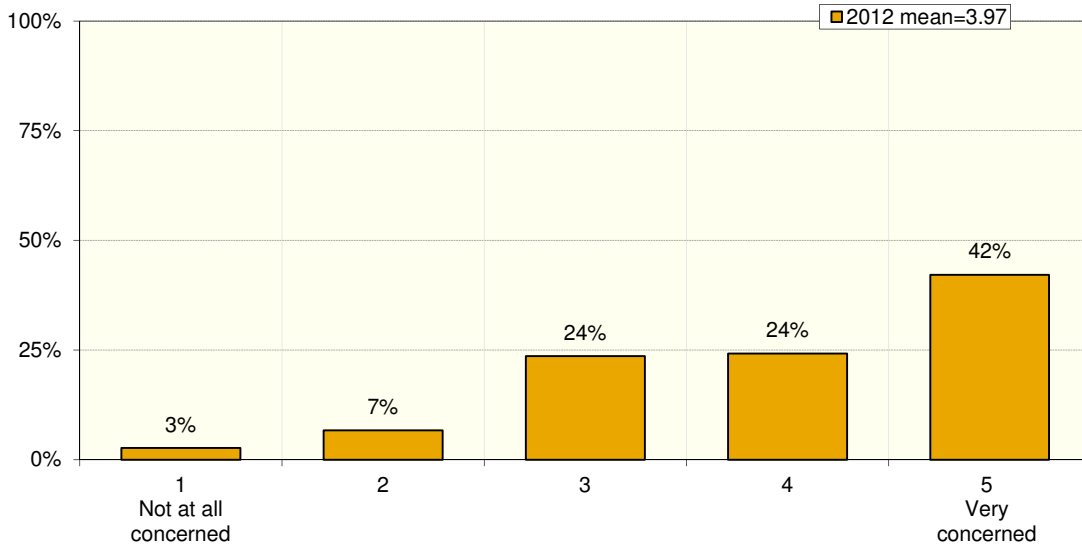
- ✓ Those whose educational attainment is high school graduate; those with an “other” marital status (not married or single); and those whose annual family income is \$15,000-\$25,000 are more likely to say they are very concerned about state income taxes.

(cont.) How heavy is the burden from...?

**Question 60: Sales taxes**



**Question 61: Property taxes**



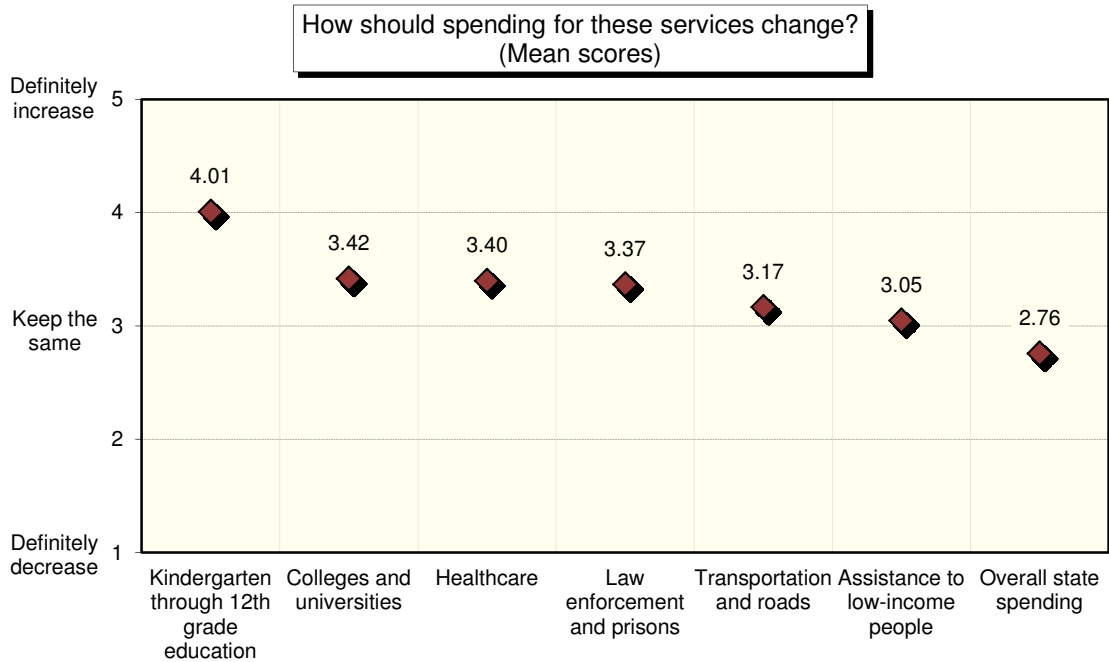
- ✓ Residents who are 45-65+ years old; those whose political ideology is conservative (likelihood increases as resident is more conservative); and those who are married or whose marital status is "other" (not married or single) are more likely to say they are very concerned about property taxes.

## PUBLIC SPENDING

(ASKED OF ALL RESIDENTS IN 2012 & 2010; IF 3, 4, OR 5 ON “GOVERNMENT SPENDING” IN 2008)

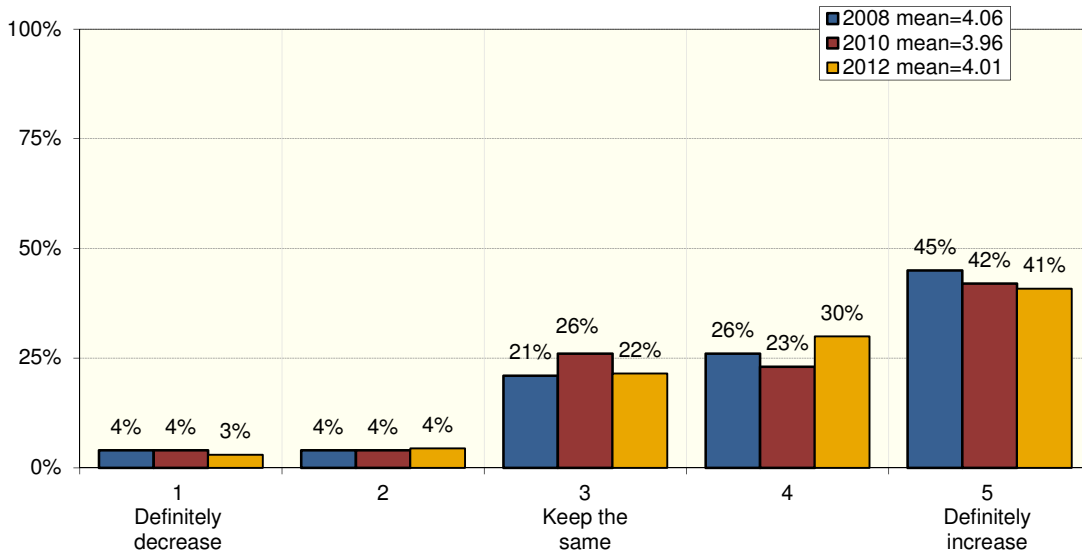
	2004	2008	2010	2012
<i>Number responding, unless otherwise specified</i>		548	604	674

**Questions 64-70: Considering the major services provided by state and local government, please describe whether you think they should increase spending, keep spending the same, or decrease spending in the following areas, using a scale where one means “Definitely decrease spending” and five means “Definitely increase spending,” (IF NEEDED: Three means “Keep spending the same.”)**



(cont.) How should government spending change for...?

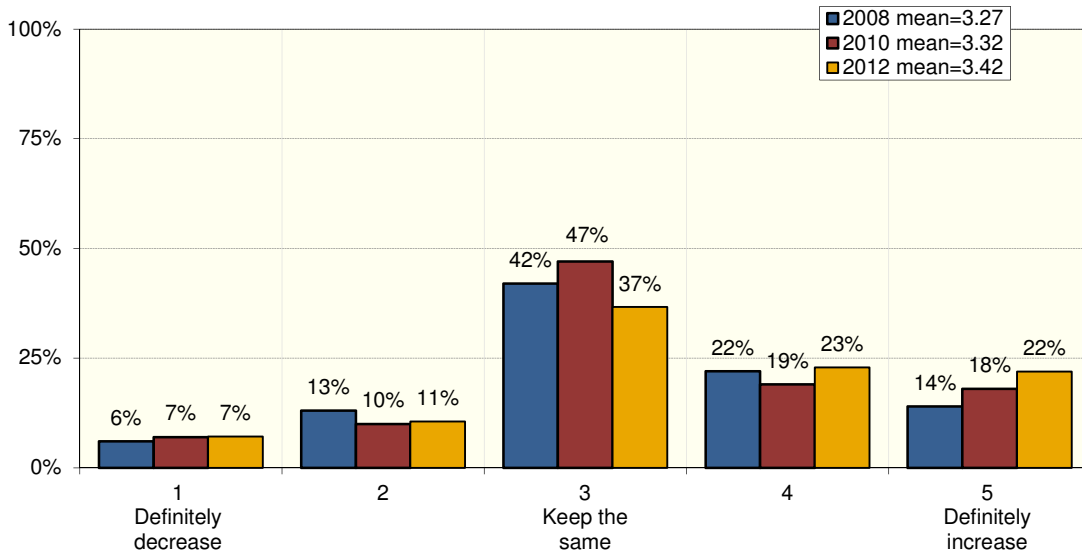
**Question 64: Kindergarten through 12th grade education**



- ✓ Females; Democrats and independent voters; those whose political ideology is moderate or liberal; and those with an “other” marital status (not married or single) are more likely to say they think state and local government should definitely increase spending for kindergarten through 12th grade.

(cont.) How should government spending change for...?

**Question 65: Colleges and universities – Higher education<sup>17</sup>**



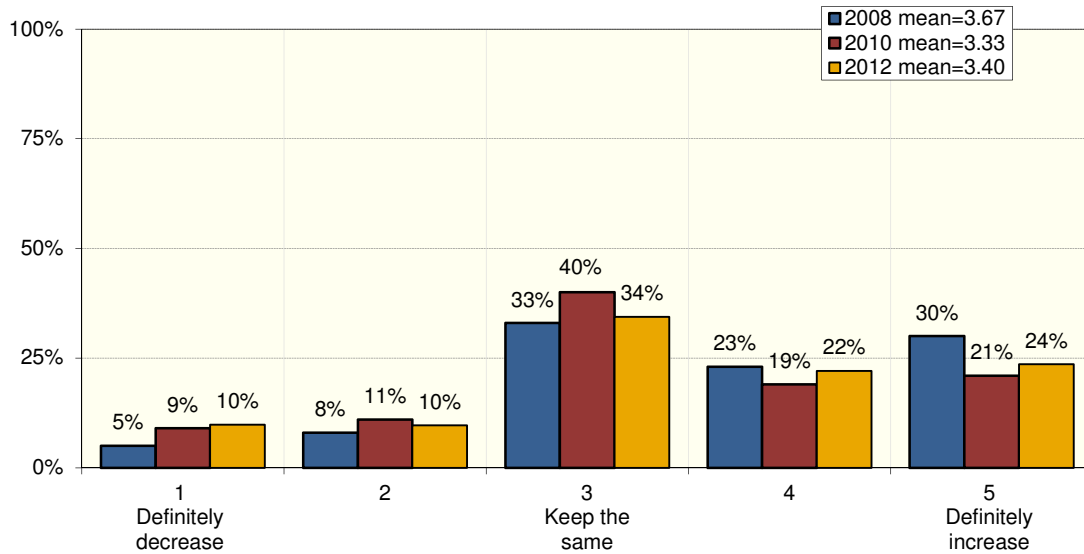
- ✓ Republicans or those who list themselves as “other” politically (not Republican, Democrat, or independent); those whose political ideology is somewhat conservative and very conservative; those whose religious preference is LDS; those who have children under the age of 18 living at home; are more likely to say they think state and local government should keep spending the same for colleges and universities.
- ✓ Democrats; Catholics; are more likely to say they think state and local government should *definitely increase* spending for colleges and universities.

<sup>17</sup> 2008-2010: “Colleges and universities”



(cont.) How should government spending change for...?

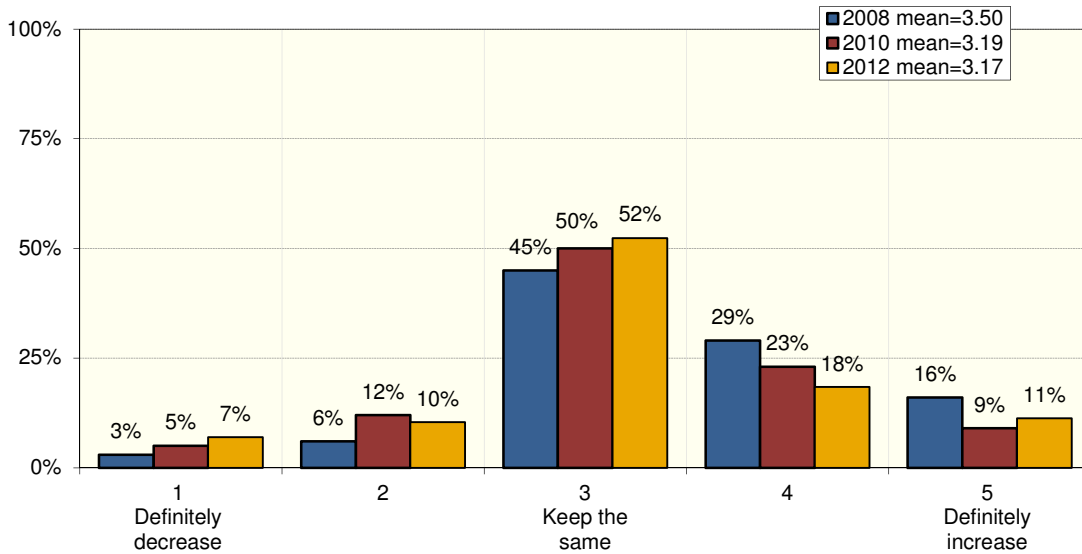
**Question 66: Healthcare**



- ✓ Those whose political ideology is conservative (likelihood increases as residents are more conservative) are more likely to say they think state and local government should definitely decrease spending for health care.
- ✓ Republicans; and those whose political ideology is somewhat conservative are more likely to say they think state and local government should *keep spending the same* for health care.
- ✓ Democrats; those whose political ideology is liberal (likelihood increases as the resident is more liberal); Catholics; those who are not active in their preferred religion; and those with an “other” marital status (not married or single) are more likely to say they think state and local government should *definitely increase spending* for health care.

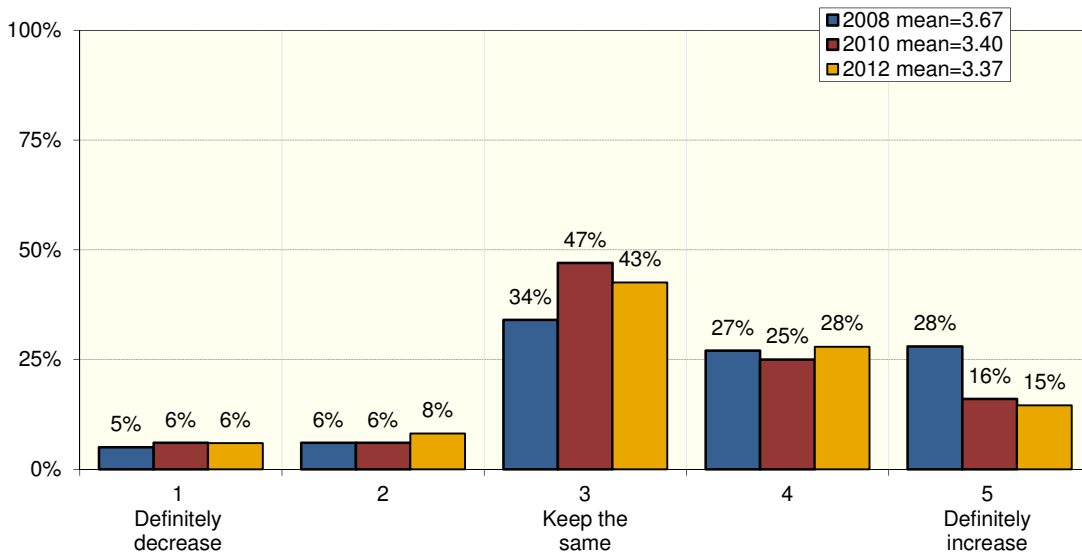
(cont.) How should government spending change for...?

**Question 67: Transportation and roads**



✓ Those who have children under the age of 18 living at home are more likely to say they think state and local government should keep spending the same for transportation and roads.

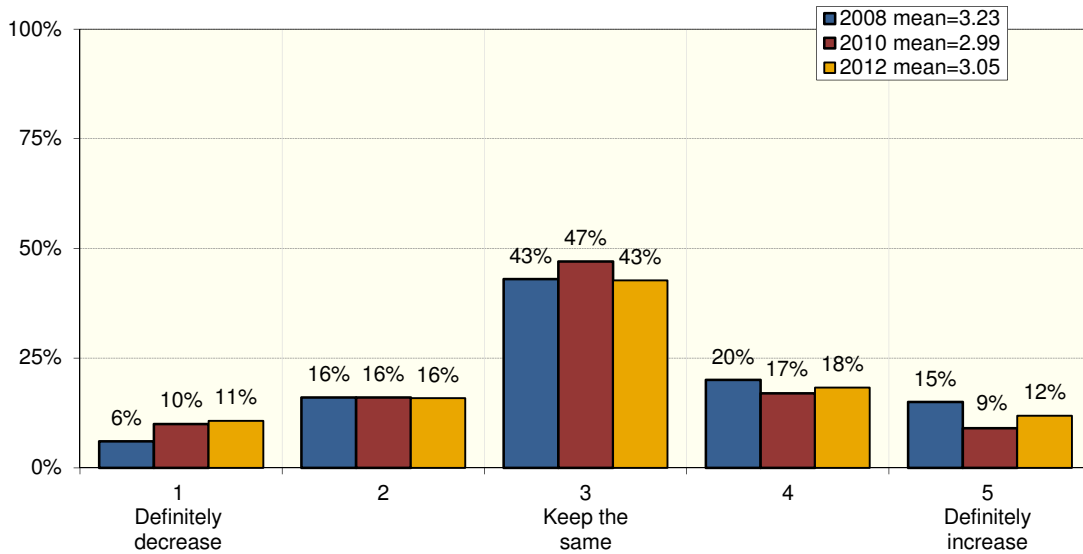
**Question 68: Law enforcement and prisons**



✓ Those whose educational attainment is some college/technical school or college graduate; and those whose religious preference is LDS those who are very active in their preferred religion are more likely to say they think state and local government should keep spending the same for law enforcement and prisons.

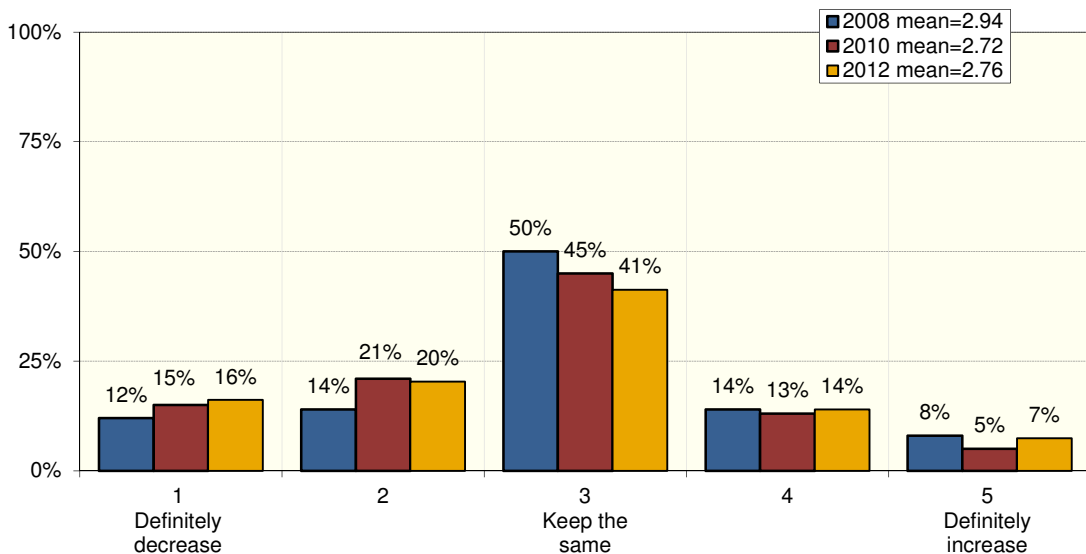
(cont.) How should government spending change for...?

**Question 69: Assistance to low-income people**



- ✓ Females; those who are 25-34 years old and 45-65+ years old; Republicans and independent voters; those whose political ideology is very conservative, somewhat conservative, and moderate; those whose preferred religion is LDS, who have no religious preference or whose preference is "other" (not Catholic, Protestant, or LDS); those who are very active or not active in their preferred religion; those who are married or whose marital status is "other" (not married, or single); those who are employed full-time, part-time; and homemakers are more likely to say they think state and local government should keep spending the same for assistance to low-income people.

**Question 70: Overall state spending**



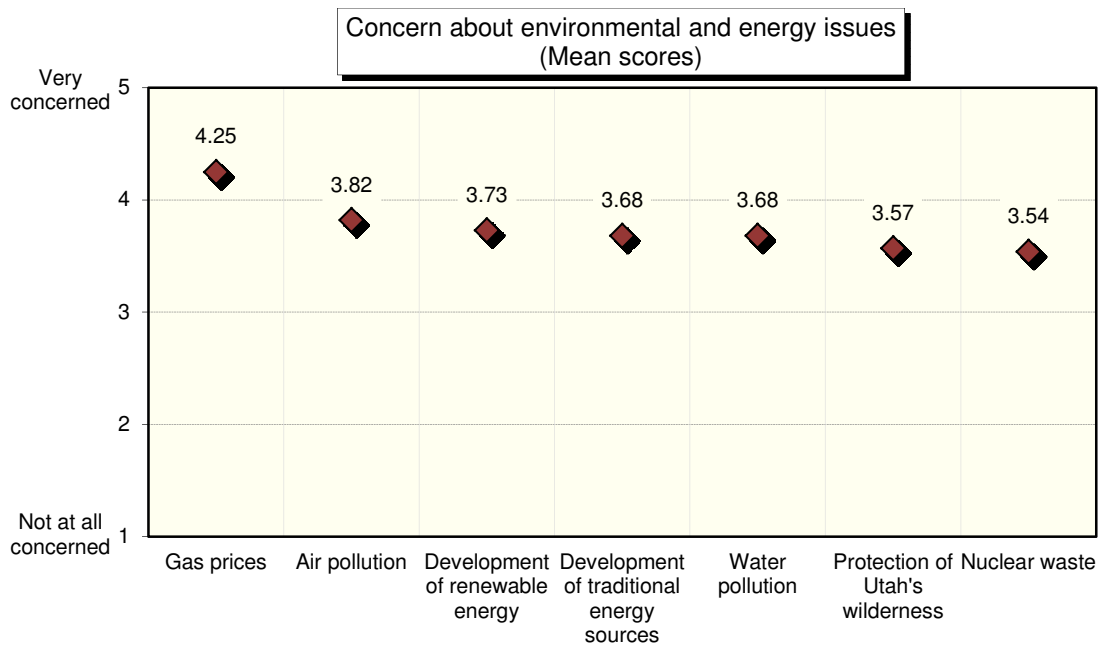
- ✓ Females; Democrats; those whose political ideology is liberal; Catholics and Protestants; are more likely to say they think state and local government should keep spending the same for overall state spending.

## ENERGY AND ENVIRONMENT

(ASKED IF 3, 4, OR 5 ON "WATER SUPPLY AND QUALITY" OR "ENERGY ISSUES, INCLUDING UTILITIES AND GASOLINE PRICES")

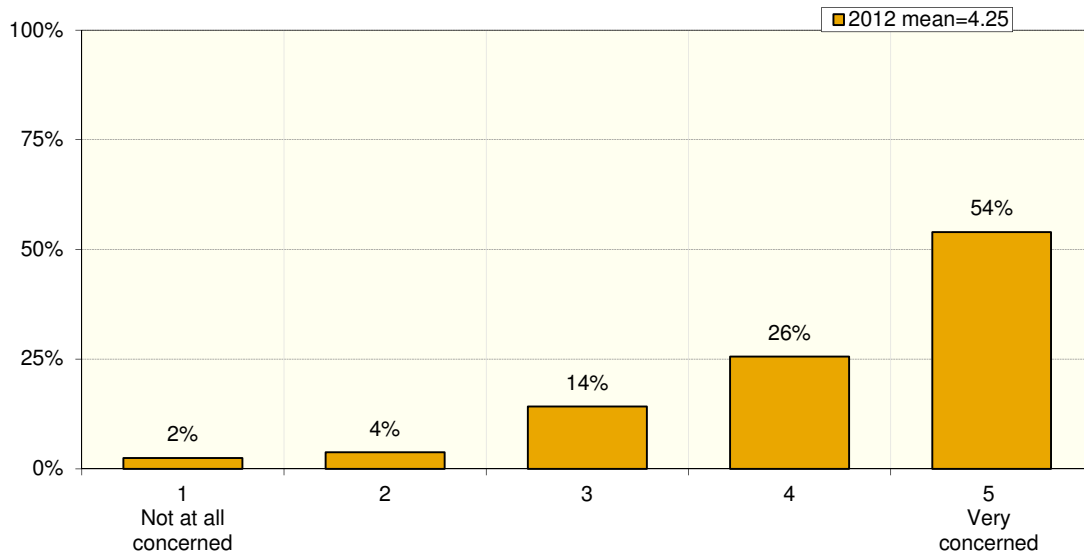
	2004	2008	2010	2012
Number responding, unless otherwise specified	-	548	604	767

**Questions 72-78: Now consider environmental and energy issues in Utah. Using the same 1-5 scale, how concerned are you with...? (REPEAT SCALE AS NEEDED)**



(cont.) How concerned are you with...?

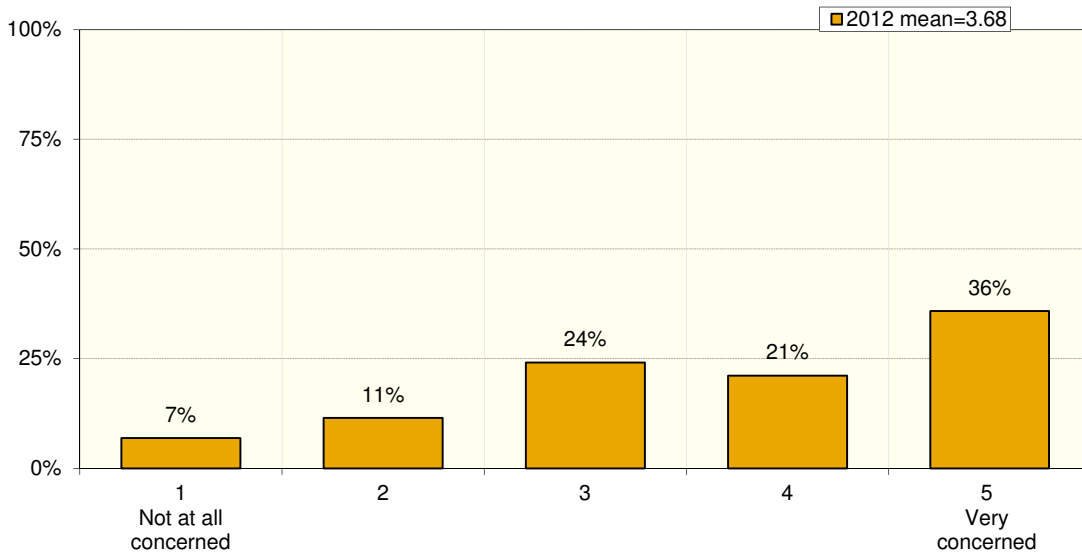
**Question 72: Gas prices**



- ✓ Those whose educational attainment is some college/technical school or less; those who have lived in Utah for more than 20 years; Republicans and those who say they are “other” politically (not Republican, Democrat, or independent); those whose political ideology is conservative (likelihood increases as residents are more conservative); and those who are married or whose marital status is “other” (not married or single) are more likely to say they are very concerned about gas prices.

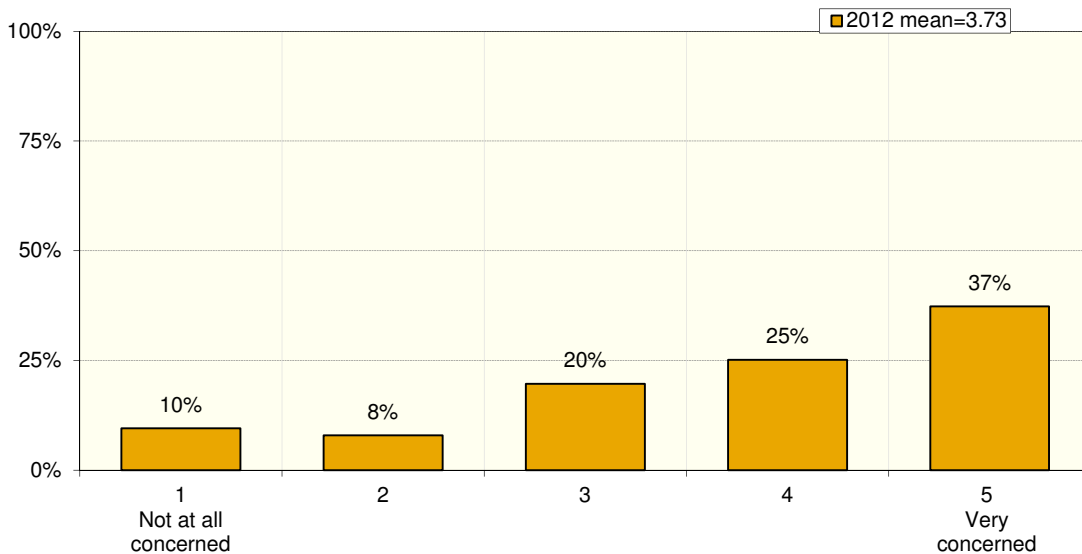
(cont.) How concerned are you with...?

**Question 73: Development of traditional energy sources, such as drilling for oil and gas**



- ✓ Those whose political ideology is very conservative are more likely to say they are very concerned about the development of traditional energy sources.

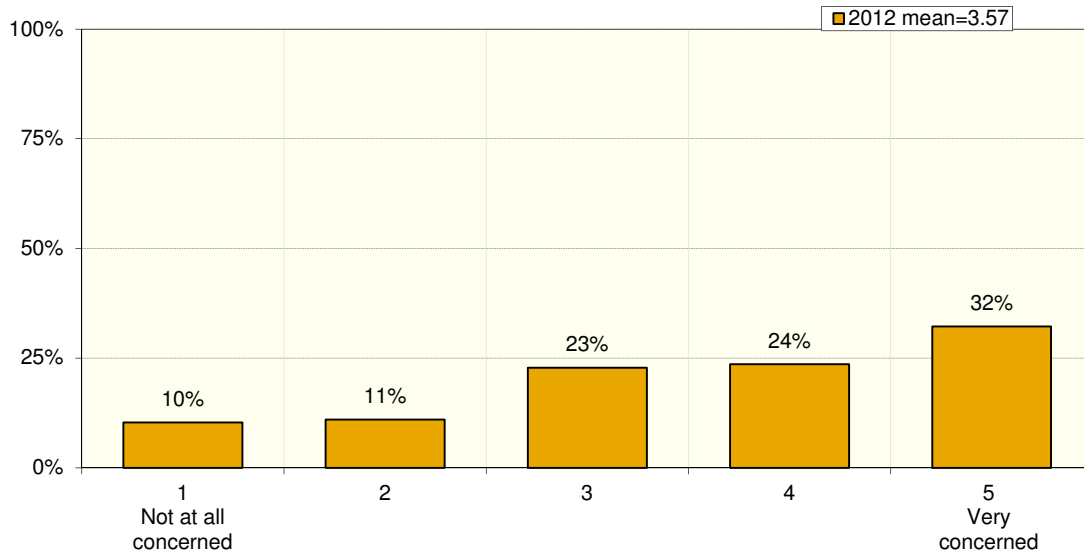
**Question 74: Development of renewable energy sources, such as wind and solar**



- ✓ Democrats; those whose political ideology is liberal (likelihood increases as residents are more liberal); those who have no religious preference or whose preference is "other"; those who are not active in their preferred religion; and those who do not have children under the age of 18 living at home are more likely to say they are very concerned about the development of renewable energy sources.

(cont.) How concerned are you with...?

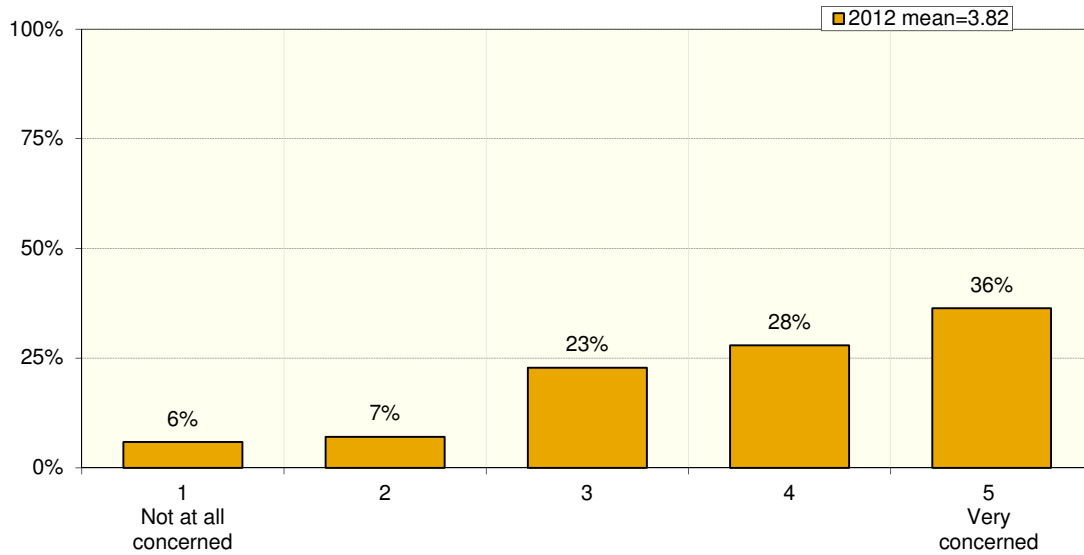
**Question 75: Protection of Utah's wilderness**



- ✓ Democrats; those whose political ideology is liberal (likelihood increases as residents are more liberal); those without religious preference or whose preference is "other"; those not active in their preferred religion; those with an "other" marital status (not married or single); and those without children under the age of 18 living at home are more likely to say they are very concerned about the protection of Utah's wilderness.

(cont.) How concerned are you with...?

**Question 76: Air pollution**

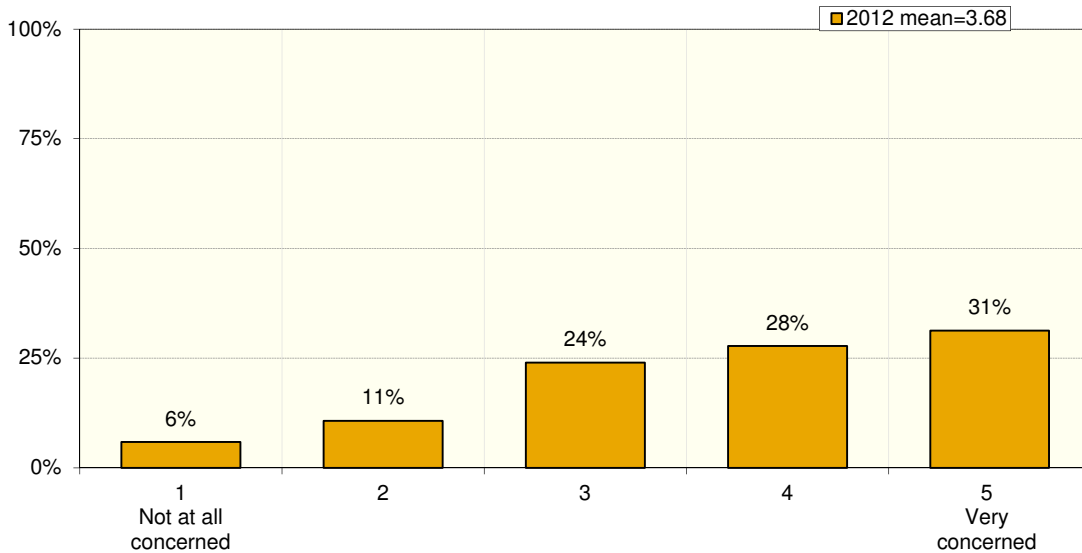


- ✓ Females; Democrats; those whose political ideology is liberal (likelihood increases as residents are more liberal); Catholics and Protestants, those who have no religious preference or whose preference is “other”; those not active in their preferred religion; those with an “other” marital status (not married or single); those who do not have children in the public school system; and Salt Lake County residents are more likely to say they are very concerned about air pollution.



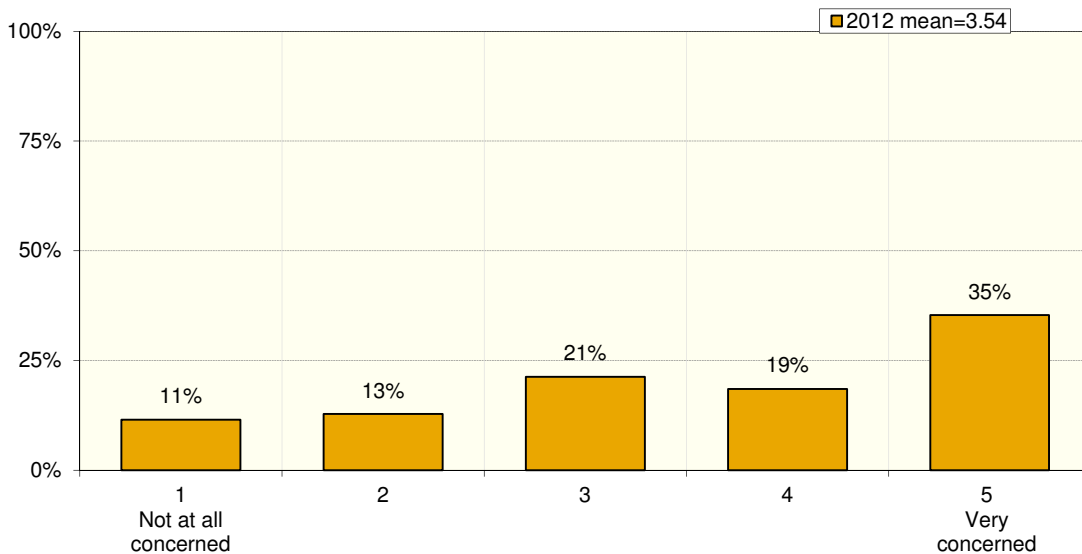
(cont.) How concerned are you with...?

**Question 77: Water pollution**



- ✓ Those 65 years old or older; Democrats; those whose political ideology is liberal or very liberal; those whose religious preference is “other” (not Catholic, Protestant, or LDS); and those with an “other” marital status (not married or single) are more likely to say they are very concerned about water pollution.

**Question 78: Nuclear Waste**



- ✓ Those who are 65 years old or older; Democrats, independents; those whose political ideology is liberal (likelihood increases as residents are more liberal); Catholics; and those with an “other” marital status (not married or single) are more likely to say they are very concerned about nuclear waste.